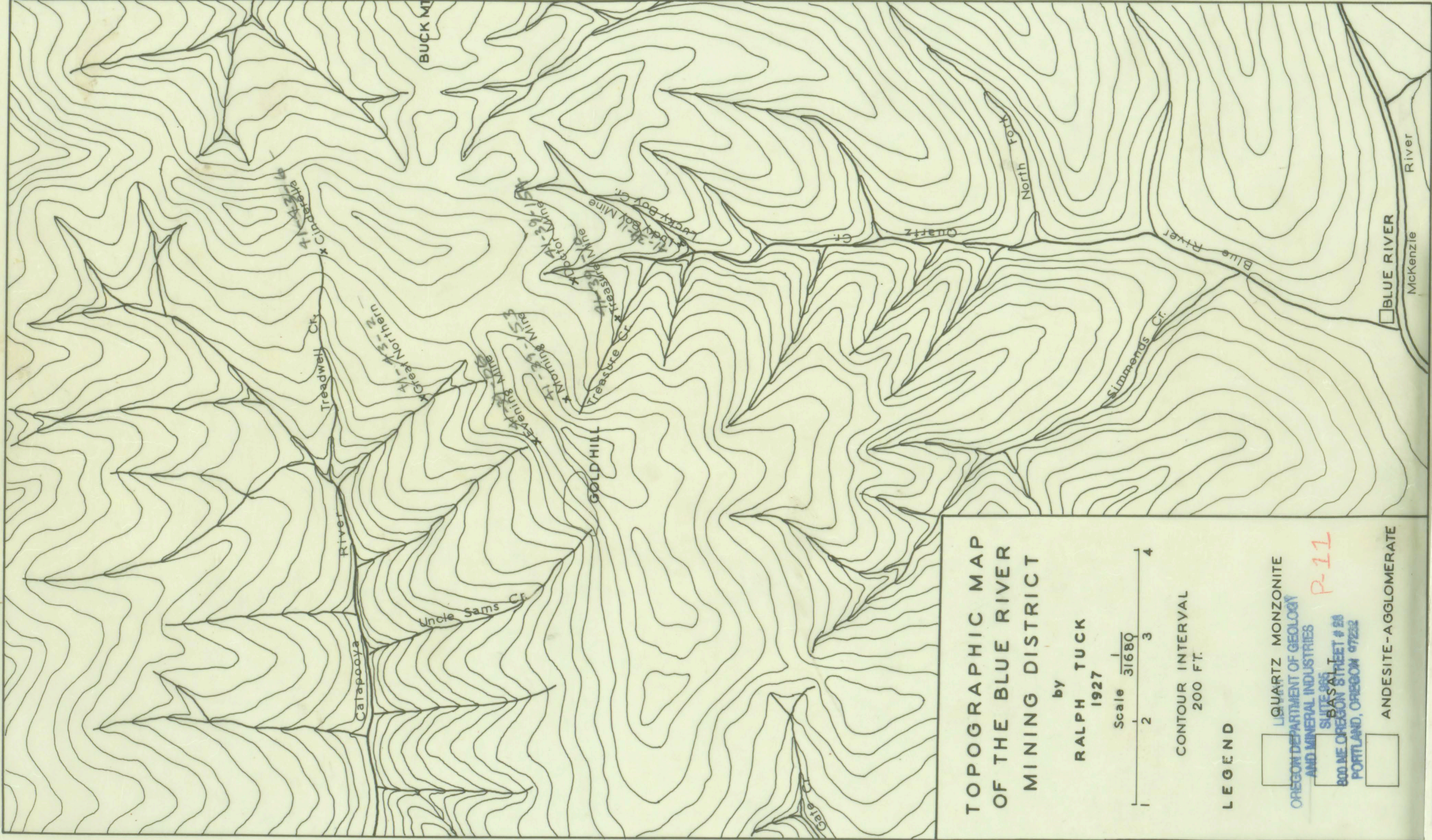


DEPOSED 11-1



**TOPOGRAPHIC MAP
OF THE BLUE RIVER
MINING DISTRICT**

by
RALPH TUCK
1927

Scale $\frac{1}{31680}$
2 3 4

CONTOUR INTERVAL
200 FT.

LEGEND

- QUARTZ MONZONITE
- OREGON DEPARTMENT OF GEOLOGY
AND MINERAL INDUSTRIES
- SUITE 901
BLISS AT
800 NE OREGON STREET # 24
PORTLAND, OREGON 97232
- ANDESITE-AGGLOMERATE

P-11



File 11-1