

Quartzville T11S, R3E

9

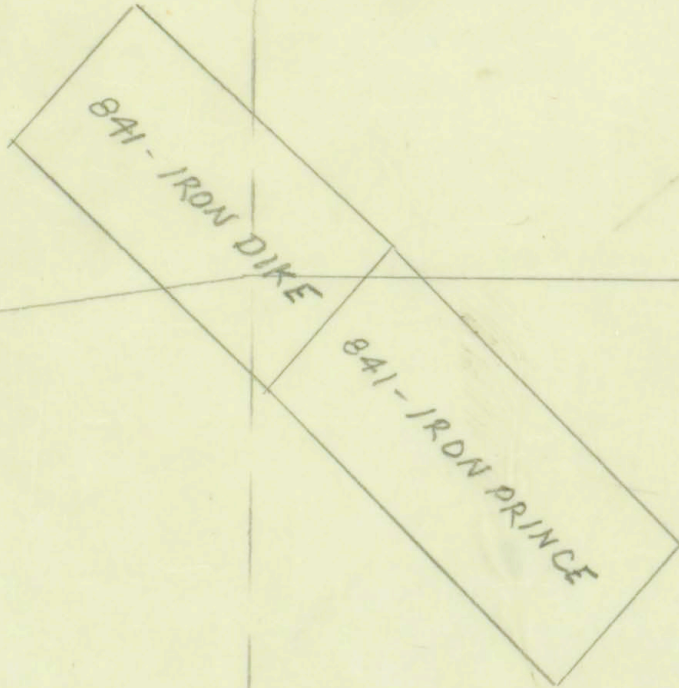
PANTHER CREEK (?) Group
Linn Co.

3A

OREGON DEPARTMENT OF GEOLOGY
AND MINERAL INDUSTRIES
SUITE 965
800 NE OREGON STREET # 28
PORTLAND, OREGON 97232

#216

P-8

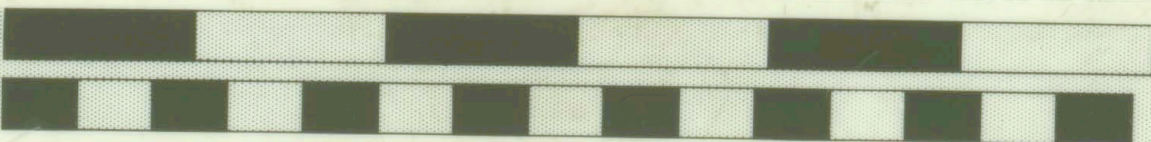


3

Linn County
Quartzville District
Pant. Creek Group
Iron Prince

INCH

CM



Metric Products
19550 Crest Drive
Los Altos, Ca. 94022