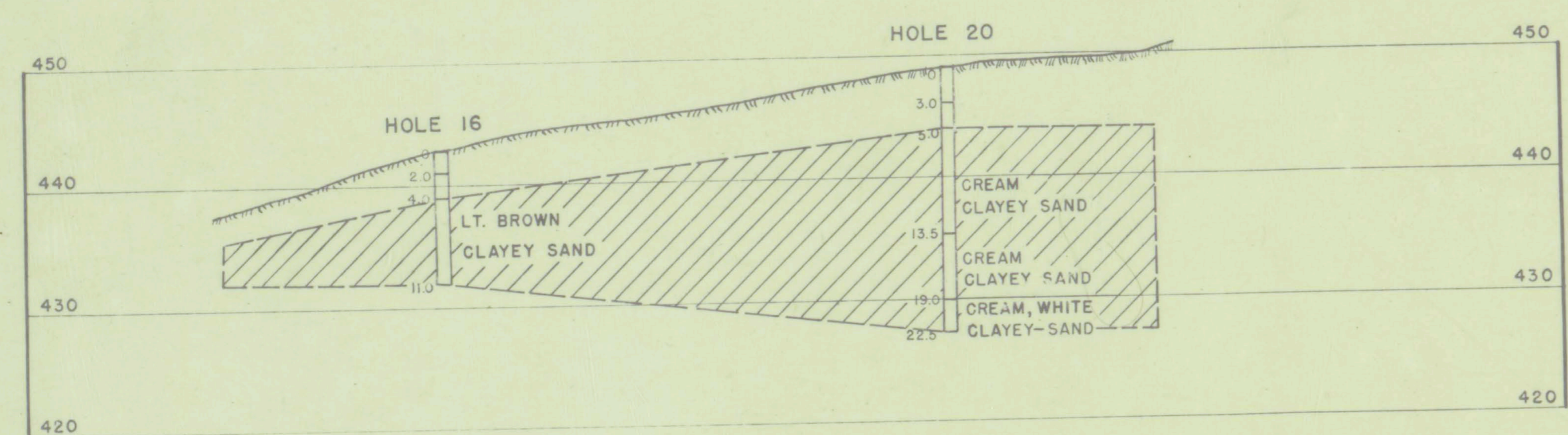
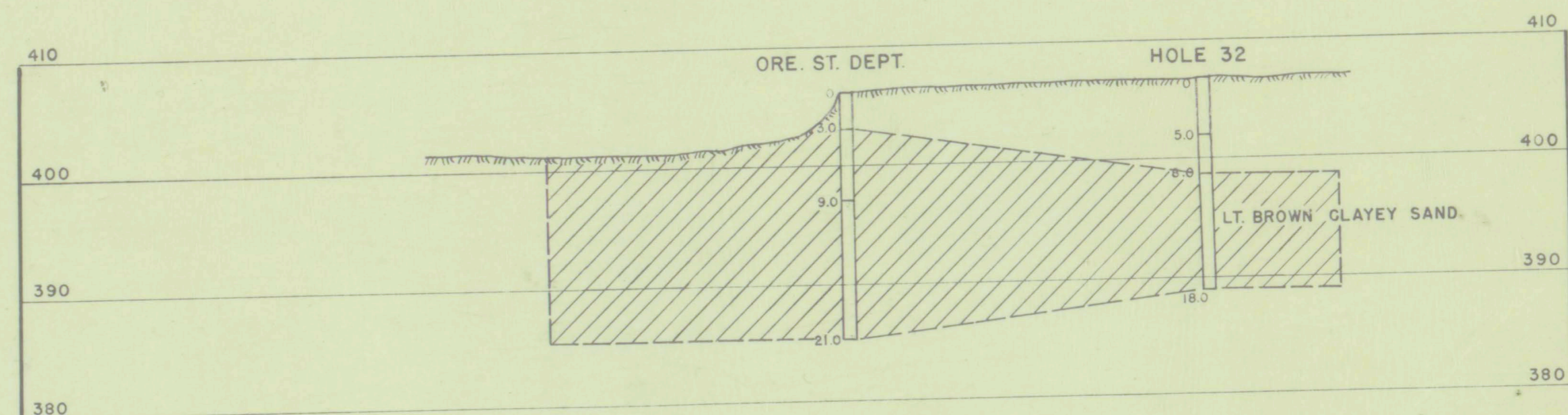
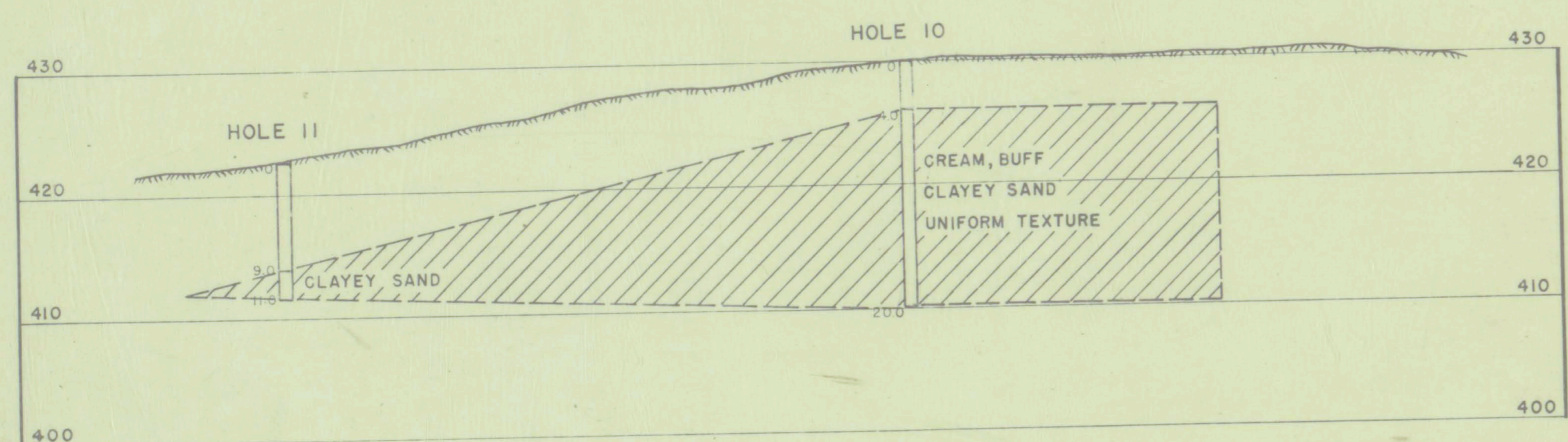
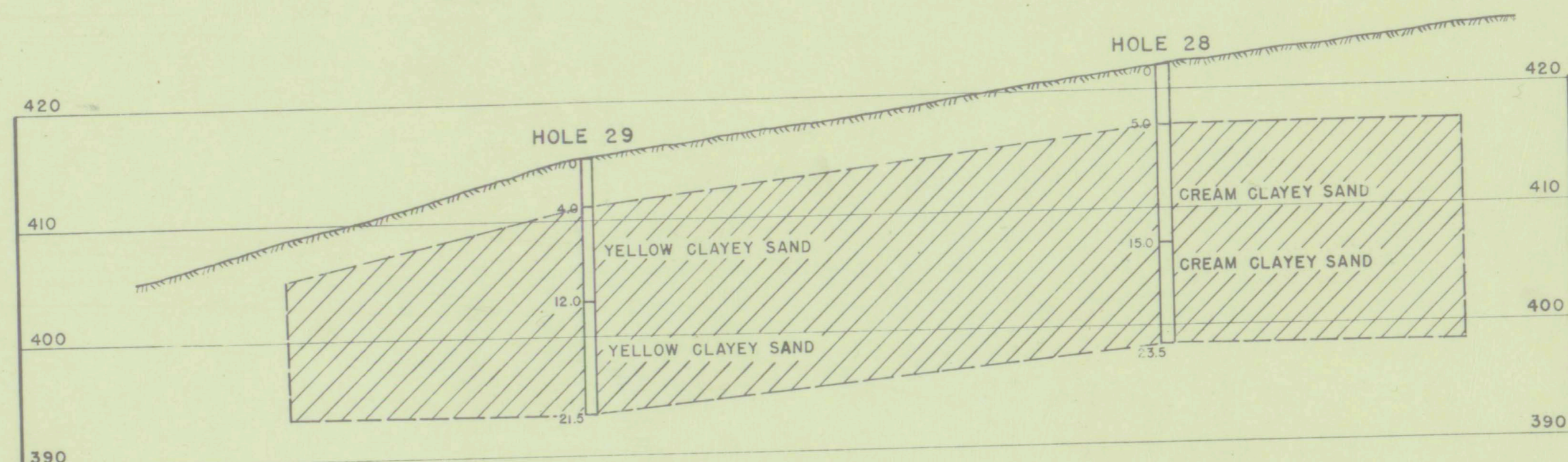
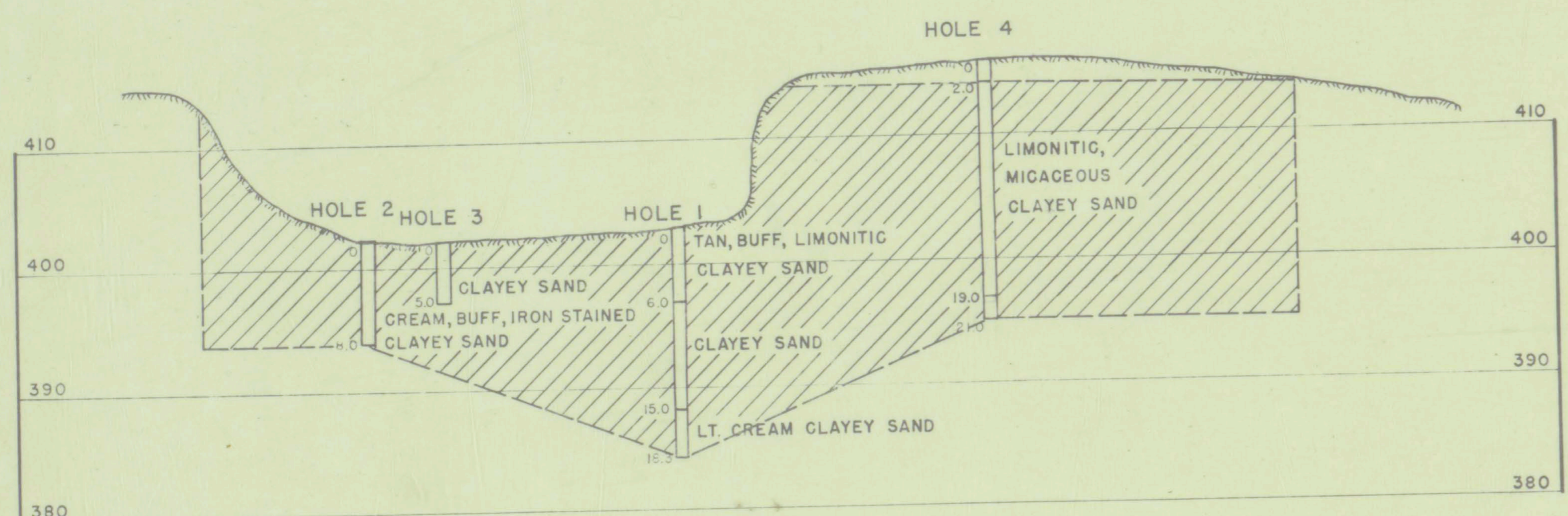
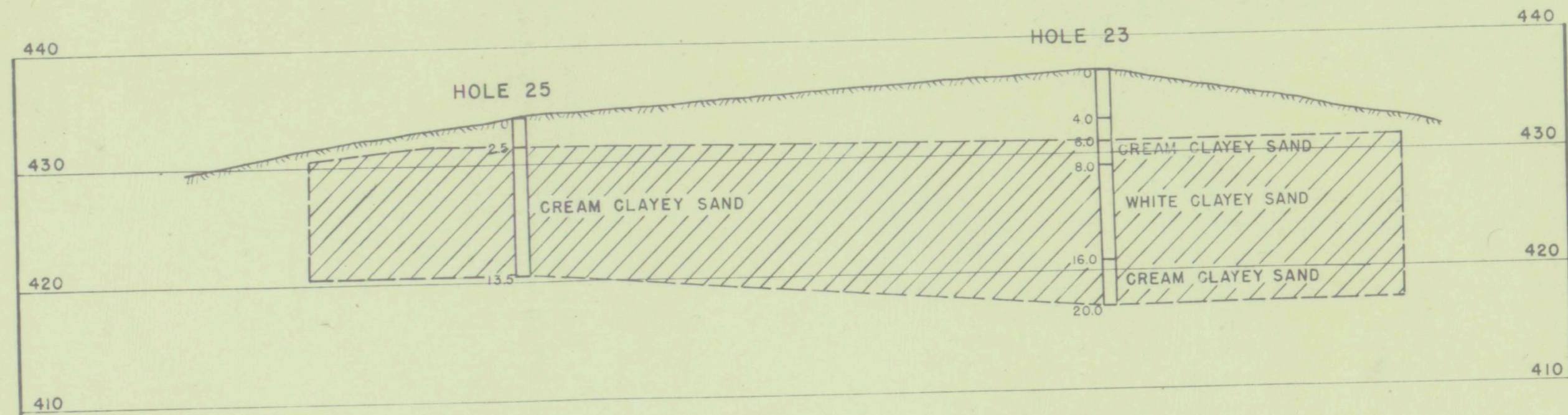
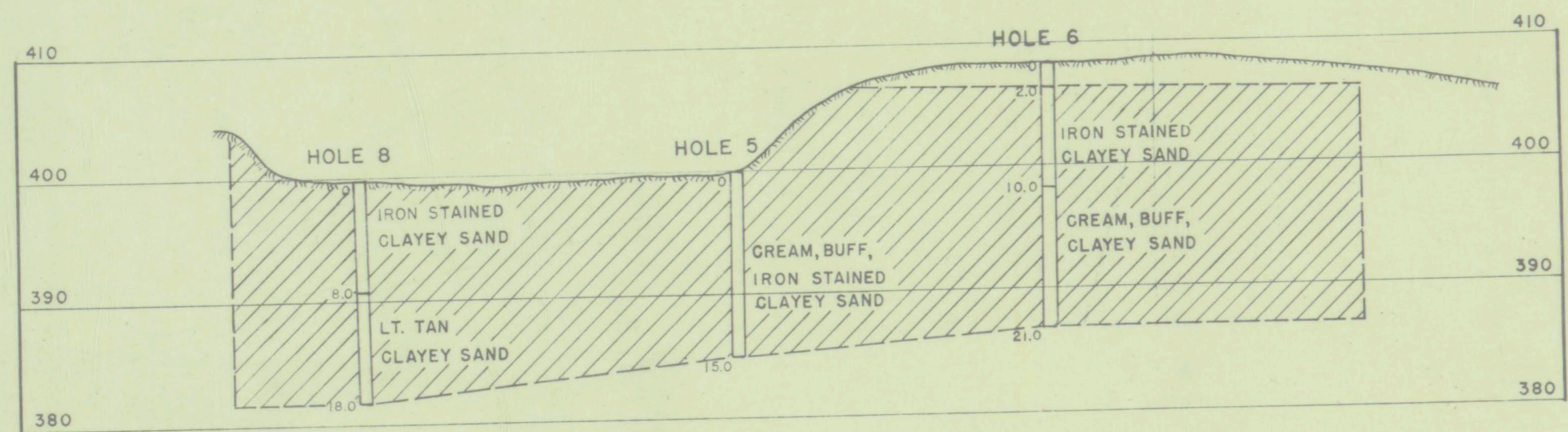
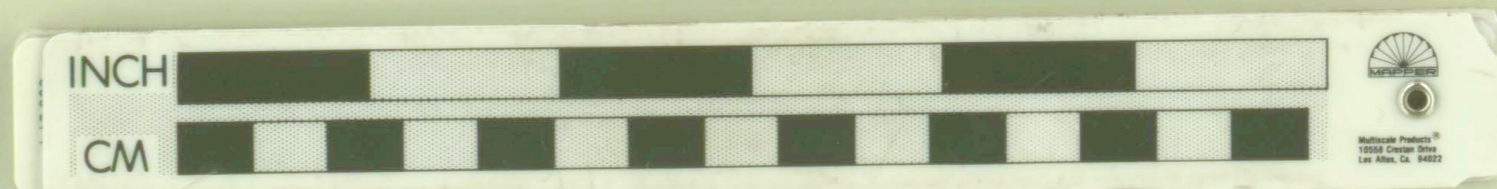


b-43



EXPLANATION

VERTICAL SCALE ON SECTIONS 1" = 10'
HORIZONTAL SCALE ON SECTIONS 1" = 40'



Livermont
 OREGON DEPARTMENT OF GEOLOGY
 AND MINERAL INDUSTRIES
 SUITE 905
 800 NE OREGON STREET # 28
 PORTLAND, OREGON 97232

b-43

U. S. DEPARTMENT OF THE INTERIOR
 BUREAU OF MINES
 DRILL HOLE SECTIONS
 EUGENE MOLDING SAND DEPOSIT
 LANE COUNTY, OREGON

DRAWN BY	ENGINEER
TRACED BY	DATE 1-6-44
APPROVED BY	REVISED MAP NO.

FIG. 3