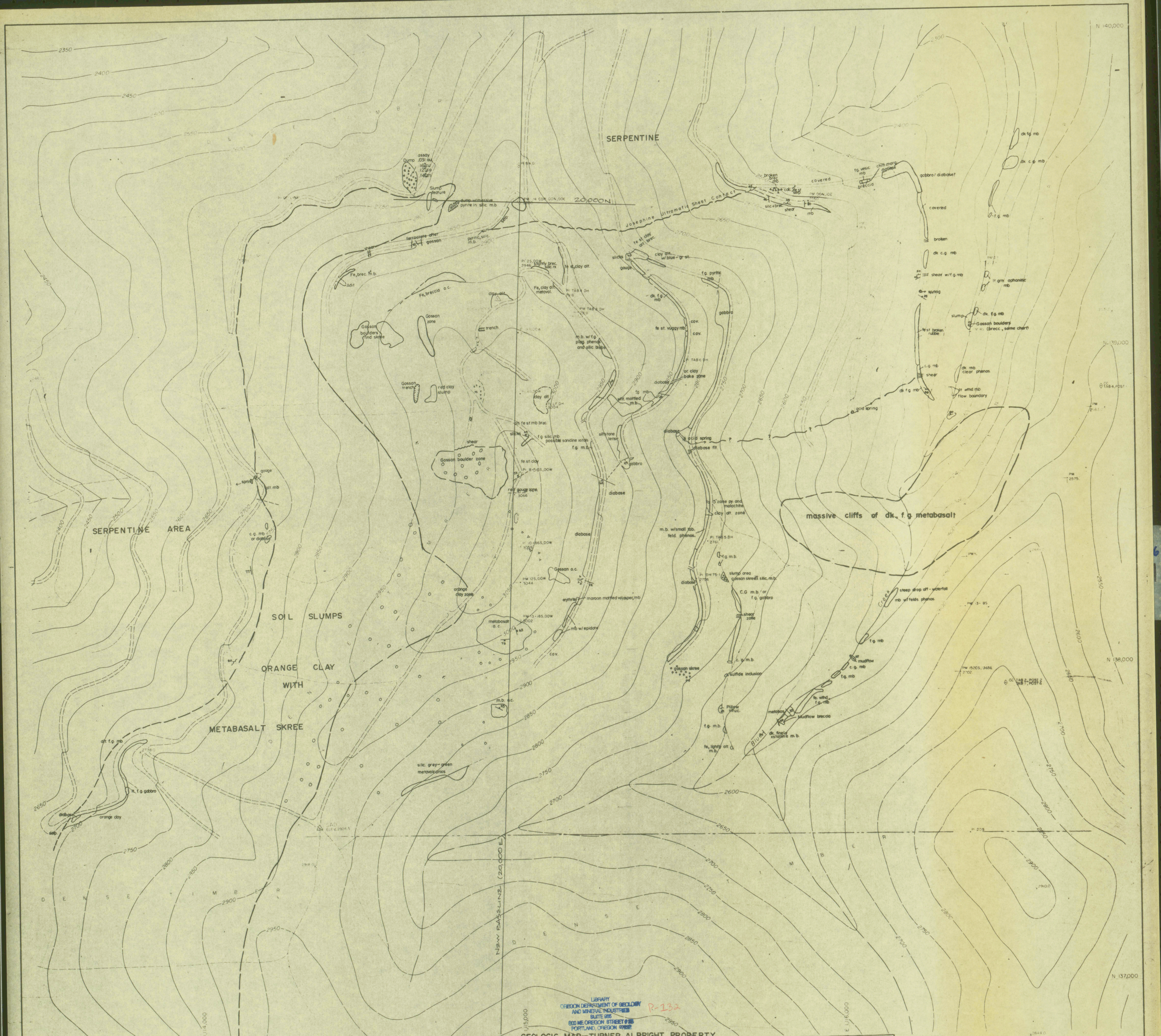


40  
38  
39  
37



NOTE DASHED CONTOURS MAY INDICATE LESS THAN STANDARD ACCURACY DUE TO DENSE VEGETATION AND HEAVY SHADOWS  
PHOTO IDENTIFIED  
PREPARED BY CHICKERING-GREEN ENGINEERS  
Eugene, Oregon PH 503-343-8877

Geologic Symbols

—	contact
▬	bedding strike slip fault
▬	fault (normal)
▬	approx. fault
▬	shear zone
▬	stickensides
⊙	breccia
⊙	pile and boulders
⊙	Dump
⊙	spring
⊙	outline outcrop
⊙	approx. outcrop

LIBRARY  
OREGON DEPARTMENT OF GEOLOGY  
AND MINERAL INDUSTRIES  
SUITE 205  
800 NE OREGON STREET  
PORTLAND, OREGON 97232

**GEOLOGIC MAP—TURNER ALBRIGHT PROPERTY**  
by Charlotte & Geoff Garcia (Dec.1980)

**BARETTA MINING CORP. LTD.**  
GRANTS PASS, OREGON

SCALE 1"=100' CONTOUR INTERVAL 10'  
THIS IS A 2X ENLARGEMENT OF THE ORIGINAL DRAWING

Rock Types

○	Sulfides
○	Gossan (Ferrous)
○	Clay slit, Iron stained, brecciated rps
○	Metabasalt (c.g. coarse grained, f.g. fine grained)
○	Julfstone inclusions within metavolcanics
○	Coarse grained rocks of Diabasic or Gabbroic Structure
○	Ultramafic Rocks - Hornblende, serpentinite, talc, amphibole
○	Orange clay

COLLECTED BY PHOTOGRAMMETRIC METHOD FROM AERIAL PHOTOGRAPHY DATED SEP 1980  
GRID TICS ARE THE OREGON STATE COORDINATE SYSTEM (SCOUT ZONE) BASED ON 1960 NAD OREGON MAIN TIE NORTH  
VERTICAL DATUM IS USED IN 1955 SEA LEVEL BASED ON CHICKERING GREEN ENGINEERS 1977

INCH  
CM

36  
37  
38  
39  
40  
41

7 Y 86