

ROBERTSON MINE

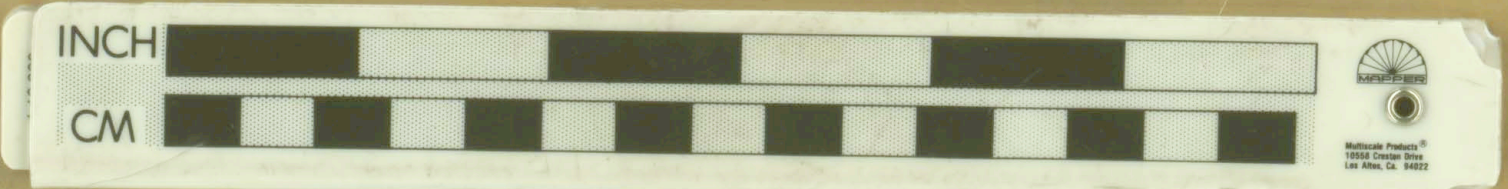
JOSEPHINE COUNTY, OREGON

To accompany Report
 By D.M. Drumheller, Jr.
 Mining Engineer,
 Spokane, Wash.

October 1st, 1928.

Scale 1 inch = 40 feet

LIBRARY
 OREGON DEPARTMENT OF GEOLOGY
 AND MINERAL INDUSTRIES
 SUITE 958
 800 N.E. OREGON STREET # 28
 PORTLAND, OREGON 97232



18 —
 — 19

15-135