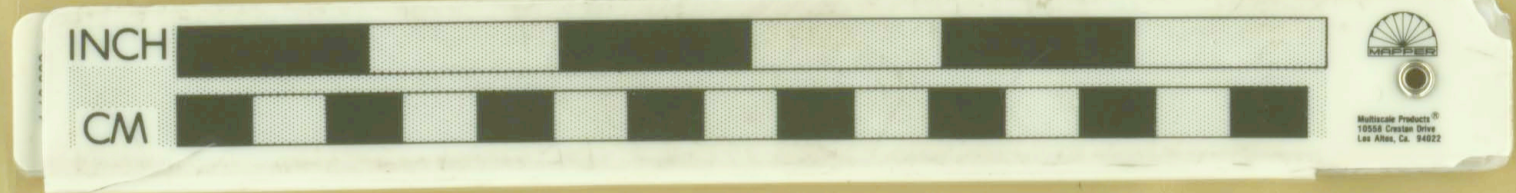
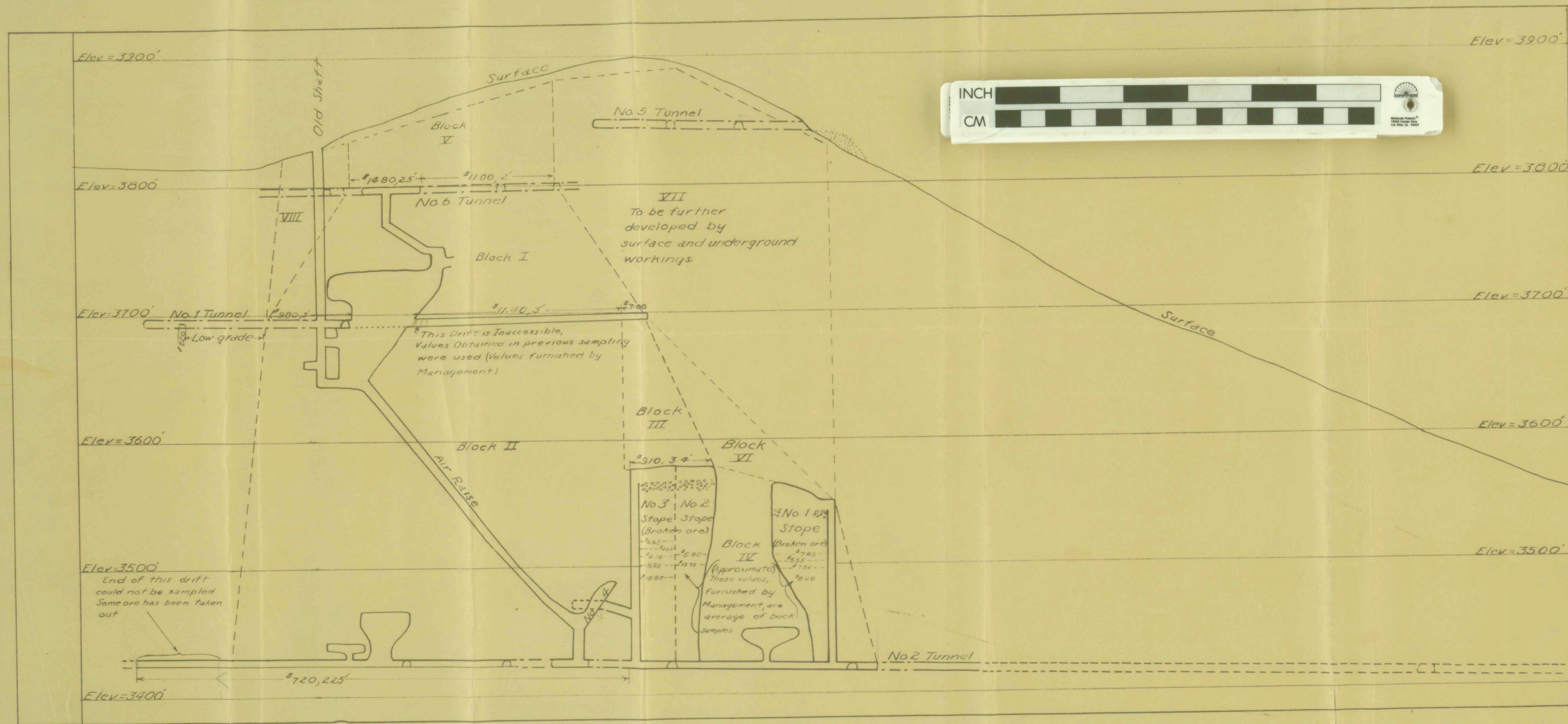


2 1/2 X 36
 J. F. HICK
 PLAIN
 13000
 13000
 13000
 13000



LIBRARY
 OREGON DEPARTMENT OF GEOLOGY
 AND MINERAL INDUSTRIES
 SUITE 885
 800 NE OREGON STREET # 28
 PORTLAND, OREGON 97232

P-103

AL SARENA MINE
 Longitudinal Section Along A-B, B'-C
 Bearing of Section is NW-SE
 Observer Looking N.E.
 Workings on Section = Solid
 Workings in Front of Section = Dot-Dash
 Workings Behind Section = Dotted
 Scale: 1 in. = 50 ft
 March, 1939 -
 Geo. P. Sapp