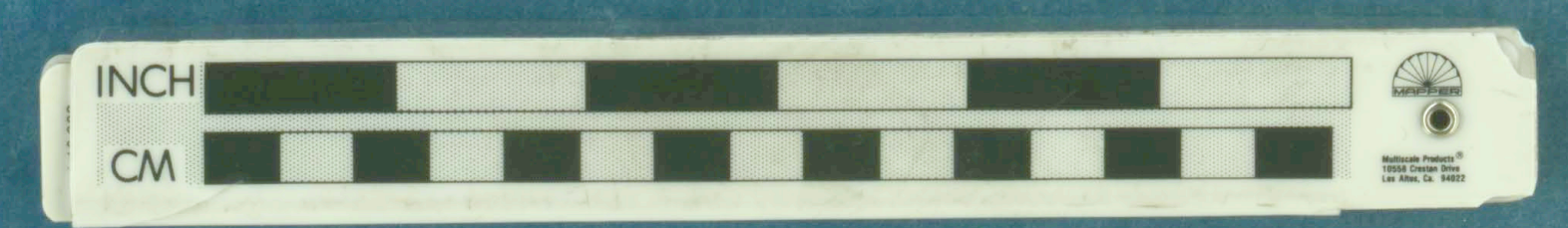
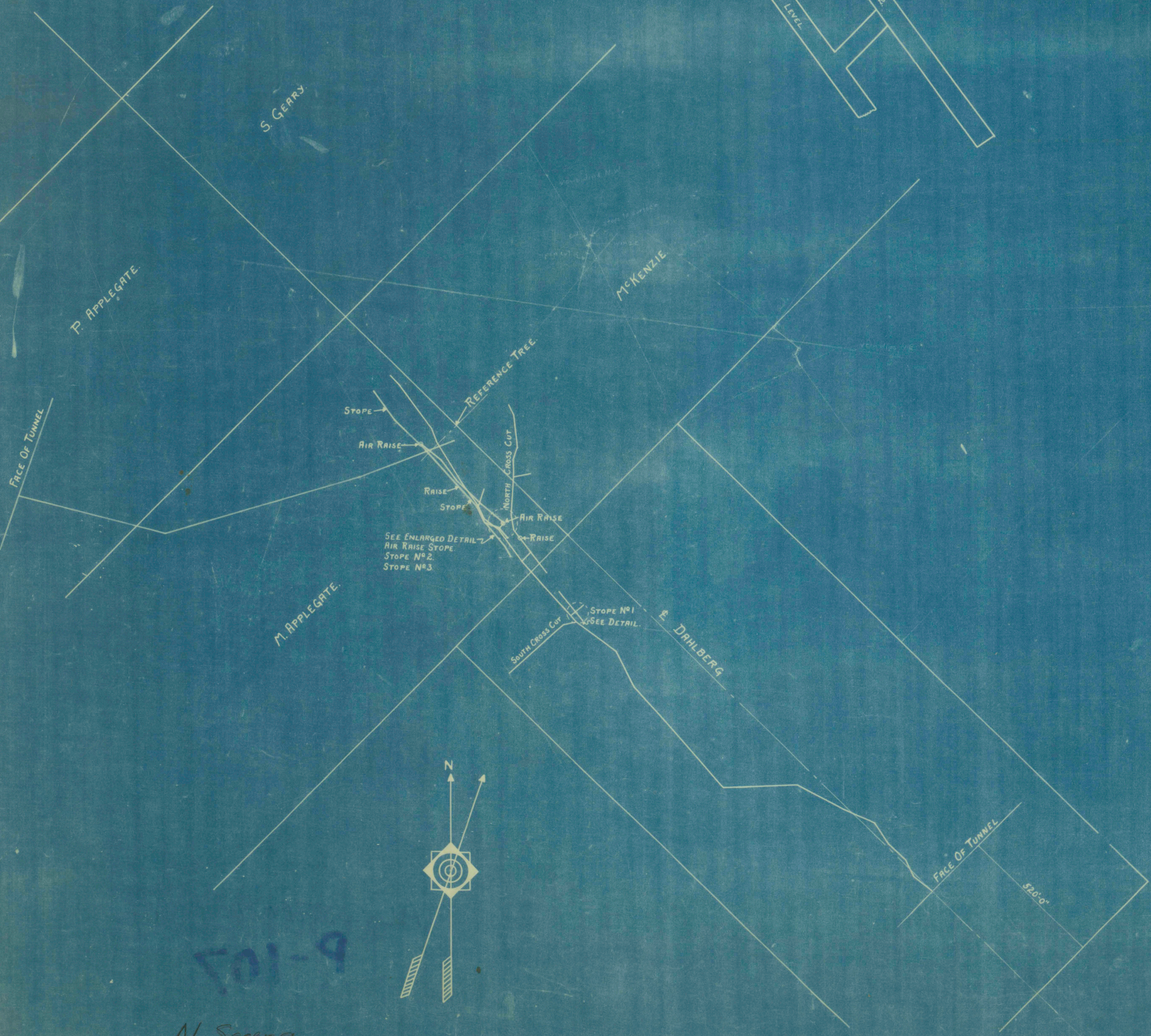




PLAN



- LEGEND**
- PROPERTY LINES.
 - LOWER LEVEL WORKINGS.
 - INTERMEDIATE WORKINGS.
 - UPPER LEVEL WORKINGS.

UNITED STATES DEPARTMENT OF GEOLOGY
AND MINERAL INDUSTRIES
SUITE 608
200 N. OREGON STREET
PORTLAND, OREGON 97208

AL SARENA MINES INC.
JACKSON COUNTY OREGON
GENERAL ARRANGEMENT OF DEVELOPMENT
AND
ENLARGED DETAIL OF WORKINGS
SCALE 1"=100' AND 1/8"=10'
Aug. 10, 1938 Kevorn

701-9
Al Sarena