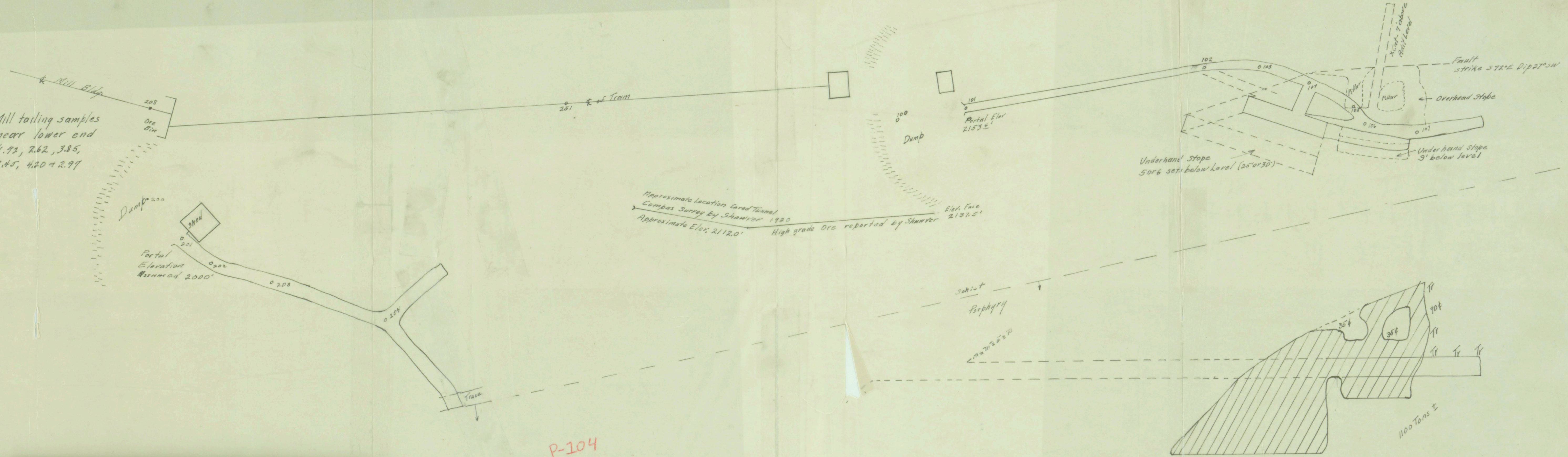
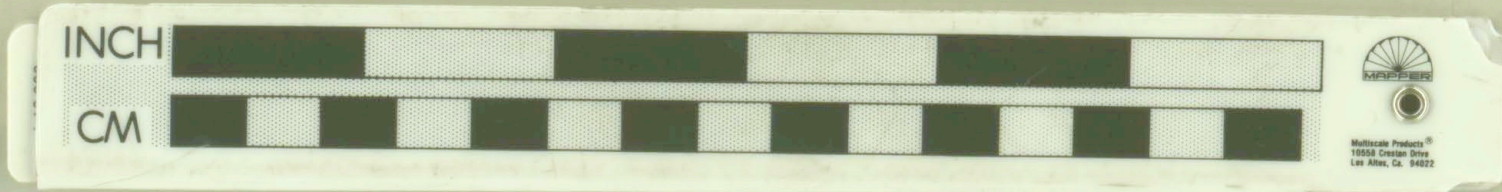


Huckleberry Mine  
Douglas Co. Ore.

Mill tailing samples  
near lower end  
4.72, 2.62, 3.85,  
2.45, 4.20 & 2.97



P-104



ORIGON DEPARTMENT OF GEOLOGY  
AND MINERAL INDUSTRIES  
SUITE 195  
800 NE OREGON STREET #28  
PORTLAND, OREGON 97232

Huckleberry Mine  
Brunton Survey  
Scale 1" = 20'  
Traced by

Douglas County  
A. B. Woodard Jr.  
June 23 1939  
J. E. Morrison

LONGITUDINAL SECTION  
STOPE AREA SHADED  
UPPER ADIT