

3000'

2900'

2800'

2700'

2600'

2500'

2400'

3000'

2900'

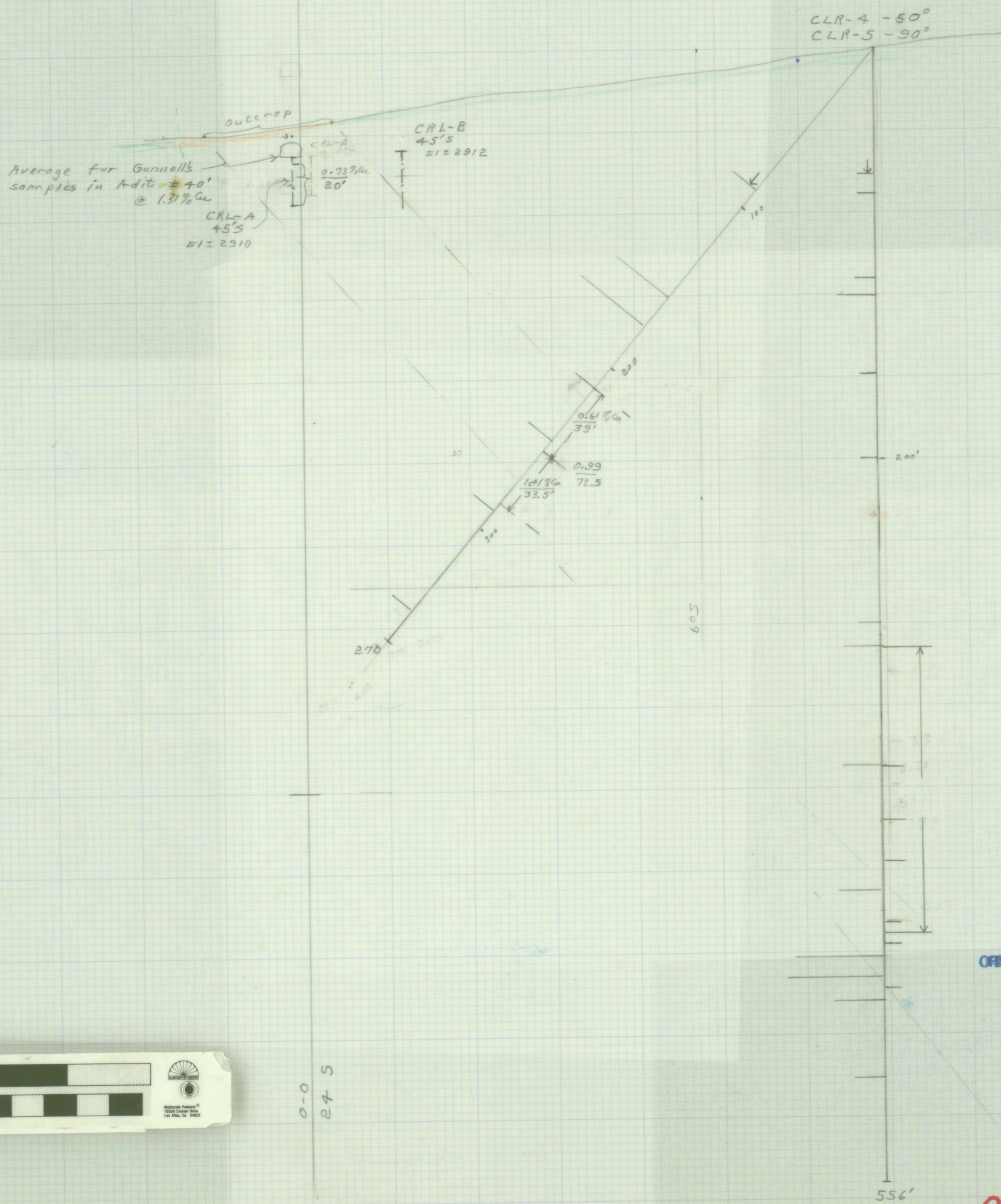
2800'

2700'

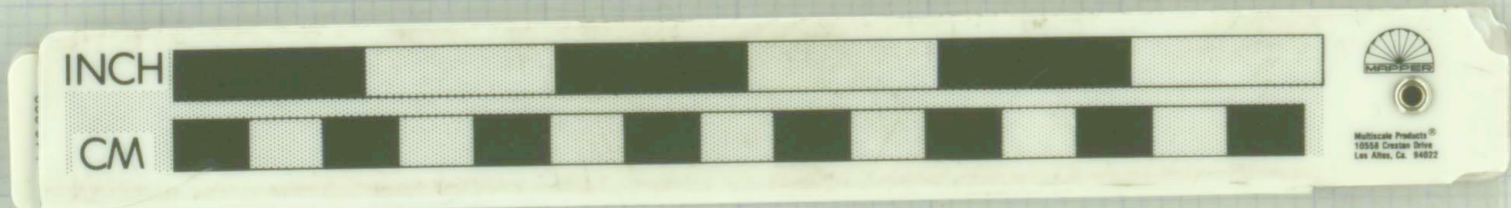
2600'

2500'

2400'



one shaft



LIBRARY
 OREGON DEPARTMENT OF GEOLOGY
 AND MINERAL INDUSTRIES
 SUITE 885
 800 NE OREGON STREET # 28
 PORTLAND, OREGON 97232

P-88

CLR-4 - N 79° W - 50°
 CLR-5 - -90°
 Collar at 76 S - 273 E
 SECTION
 N 79° W
 Looking N 11° E
 1 1/2 40' 7-17-72

Rowley Mine