



**PLATE 2**

UNION PACIFIC RAILROAD COMPANY  
NATURAL RESOURCES DIVISION-MINING  
SALT LAKE CITY, UTAH

**GEOLOGIC MAP-ROWLEY AREA**  
ROWLEY-BANFIELD PROJECT  
DOUGLAS COUNTY, OREGON

BY: D. G. FOR D. MANN  
DATE: MAY, 1928  
TO ACCOMPANY:

LIBRARY  
OREGON DEPARTMENT OF GEOLOGY  
AND MINERAL INDUSTRIES  
SUITE 905  
800 NE OREGON STREET  
PORTLAND, OREGON 97232

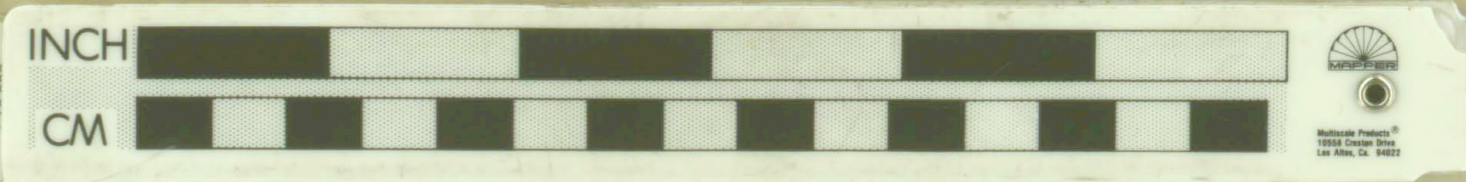
P-93

INDICATES SPREAD USED  
NUMBER AT THE END OF ANOMALY  
POSSIBLE  
PROBABLE  
DEFINITE  
SUNDRICE PROJECTION OF ANOMALOUS  
INDEXED POLARIZATION  
MEMBER GEOPHYSICS LTD. LAB.

**EXPLANATION**

NOTE: (1) METALATION (AND BARS) SHEET (NOTE)  
NOTE: (2) DRIFT, CLAY, SILT, SAND, GRAVEL, AND BARS (NOTE)  
NOTE: (3) COVERED AREA  
MEMBER GEOPHYSICS LTD. LAB.

CONTACT  
PROSPECT  
WELL  
DRAIN  
CREEK  
ROAD  
RAILROAD



MAY QUEEN