

MASSIVE FeS<sub>2</sub> & CARBONATE  
MINOR CuFeS<sub>2</sub> - SMALL BANDS CHLORITIC SCHIST  
CHLORITE SCHIST MINOR MIN.  
DARK GREEN CHLORITIC-QUARTZ-CARBONATE SCHIST  
WITH MINOR FeS<sub>2</sub> & SHEARED GNST.

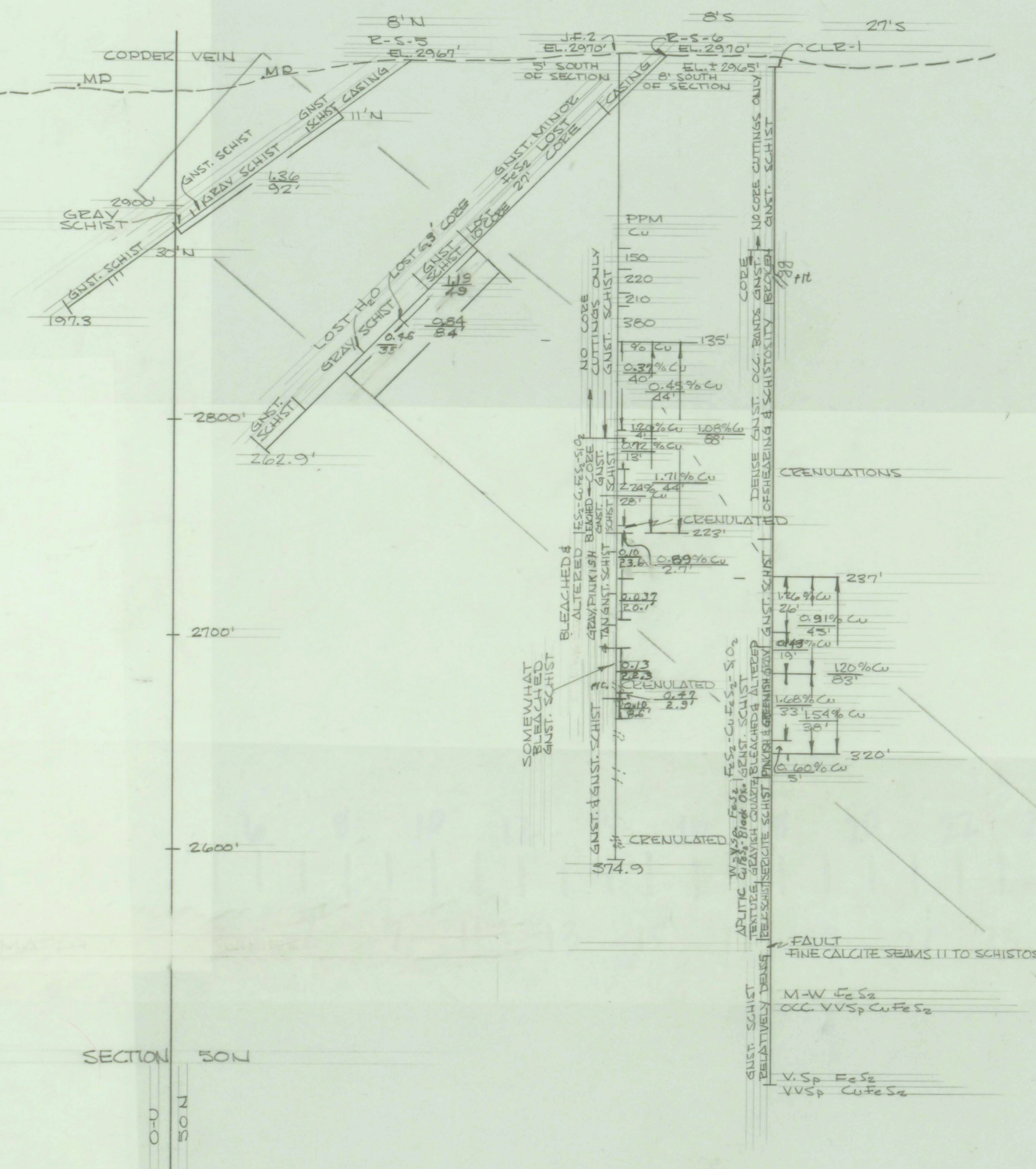
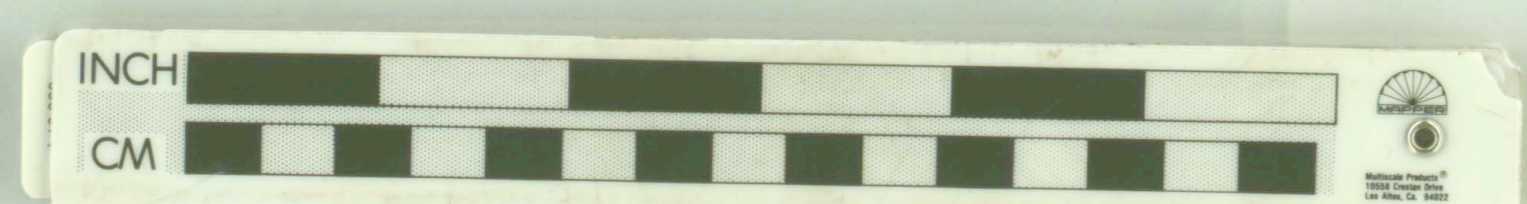
214'  
GREENISH GRAY CHLORITIC  
LOST 221'-228' GREENSTONE (GNST)  
SLIGHTLY SCHISTOSE

LIGHT GREENISH GRAY MICEAOUS  
SAND, OCC. FeS<sub>2</sub> & MAGNETIC

221'  
228'  
231'

SECTION 0-0 + 50 N

- LEGEND**
- CLR - DRILL HOLES BY COMSTOCK LODGE SILVER COPPER MINES, INC.
  - JE - DRILL HOLES BY J.M. JACKSON
  - ZS - DRILL HOLES BY WISCONSIN MINING CO. LTD.
  - GNST - GREENSTONE (GNST)
  - GNST - GREENSTONE SCHIST
  - QTSZ - QUARTZ TALE SCHIST
  - ALTR - ALTERED SCHIST MAY BE BLEACHED or GRAY to REDDISH
  - SCH - SCHISTOSITY
  - MIN - MINERALIZATION
  - FAULT - FAULT
  - AD - PROPOSED HOLE
  - 7 - 7 Cu
  - ?



COMSTOCK LODGE SILVER COPPER MINES, INC.  
ROWLEY MINE SECTIONS  
LOOKING NORTH  
SECTION 0-0 + 50 N  
SCALE: 1" = 40'  
DATE: 10-19-72

LIBRARY  
OREGON DEPARTMENT OF GEOLOGY  
AND MINERAL INDUSTRIES  
SUITE 265  
800 NE OREGON STREET # 28  
PORTLAND, OREGON 97232

P-69