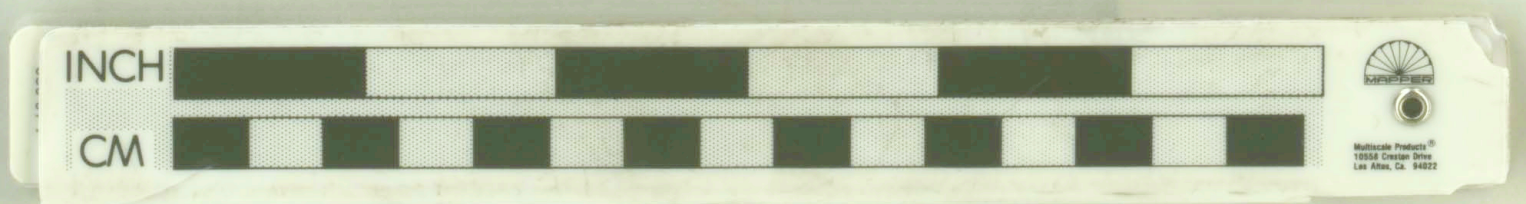


- LEGEND:**
- CLZ - DRILL HOLES BY COMSTOCK LODGE SILVER COPPER MINES, INC.
  - JE - DRILL HOLES BY J. M. JACKSON.
  - E-S - DRILL HOLES BY WISCONSIN MINING CO. LTD.
  - GREENSTONE (GNST)
  - GREENSTONE SCHIST
  - QUARTZ TALE SCHIST
  - ALTERED SCHIST MAY BE BLEACHED to GRAY or REDDISH
  - ▨ SCHISTOSITY
  - ▨ MINERALIZATION
  - - - FAULT
  - △ - DEPOSED HOLE
  - P 1/2 Cu
  - P Fe



COMSTOCK LODGE SILVER COPPER MINES, INC.  
 ZOWLEY MINE SECTIONS  
 LOOKING NORTH  
 SECTION 360 S  
 SCALE: 1" = 40'      DATE: 10-19-72

LIBRARY  
 OREGON DEPARTMENT OF GEOLOGY  
 AND MINERAL INDUSTRIES  
 SUITE 905  
 800 NE OREGON STREET # 28  
 PORTLAND, OREGON 97232

P-66