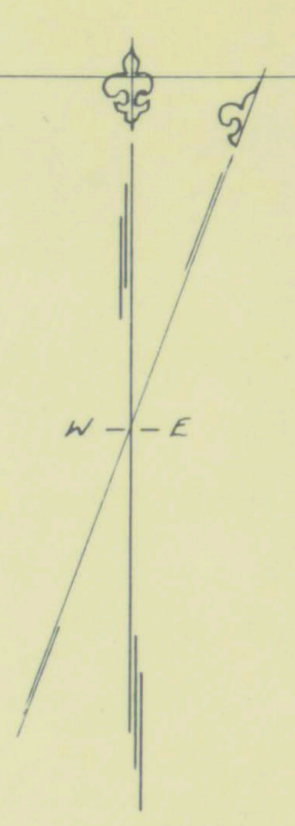
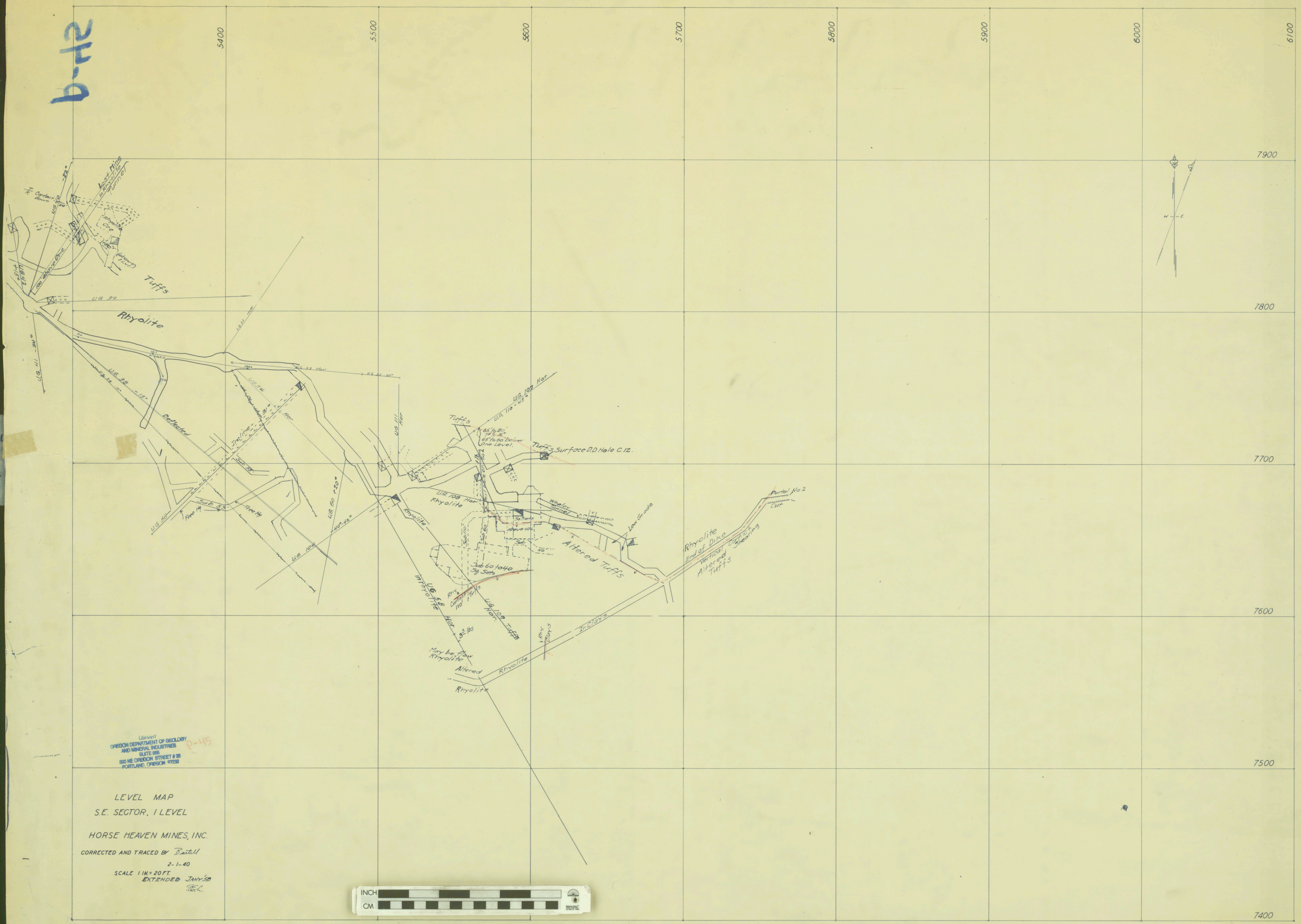


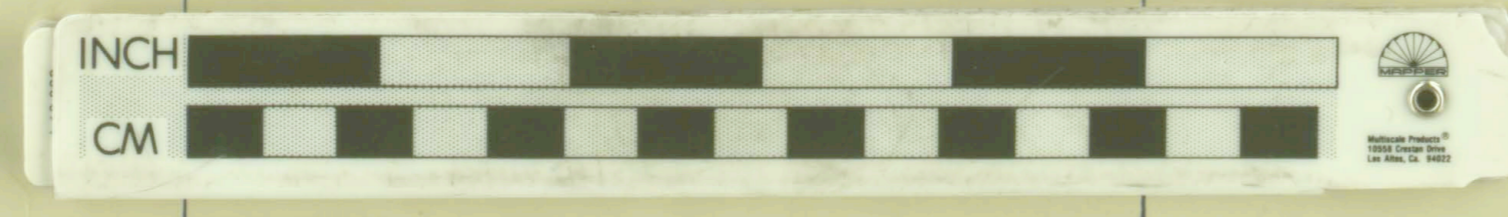
b-42

36
35
34



Library
 OREGON DEPARTMENT OF GEOLOGY
 AND MINERAL INDUSTRIES
 SUITE 805
 800 NE OREGON STREET # 200
 PORTLAND, OREGON 97232

LEVEL MAP
 S.E. SECTOR, I LEVEL
 HORSE HEAVEN MINES, INC.
 CORRECTED AND TRACED BY *Bastell*
 2-1-40
 SCALE 1"=20 FT. EXTENDED JANY 30
TEL.



41-31-12

34
35
36
37

6 48 50
47 49