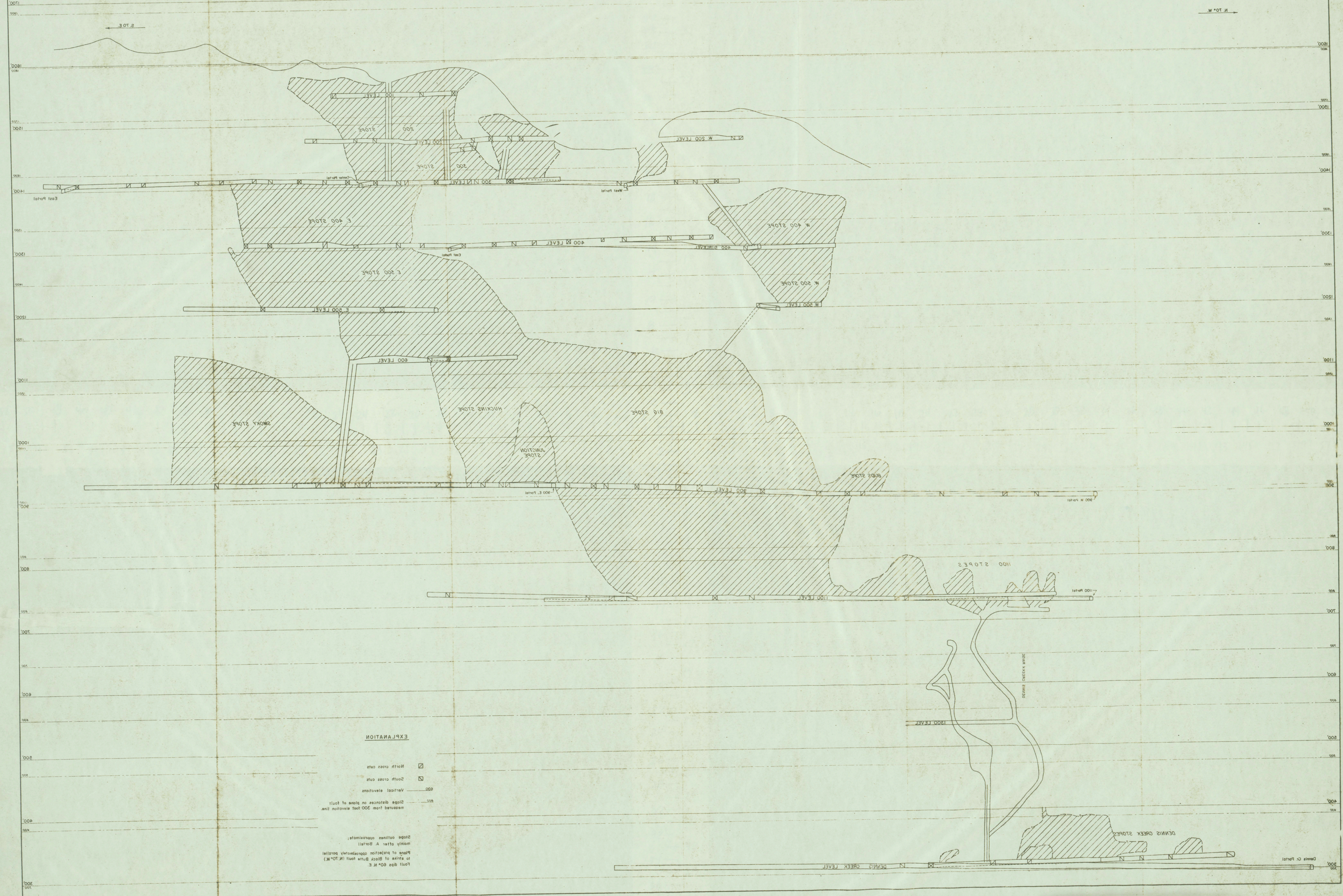


47
46
45
44
43

Return 12/25/24
Sandy L. L. L.
P. 2222

UNITED STATES DEPARTMENT OF THE INTERIOR
GEOLOGICAL SURVEY

STRATIGRAPHIC INVESTIGATIONS
PLATE 3



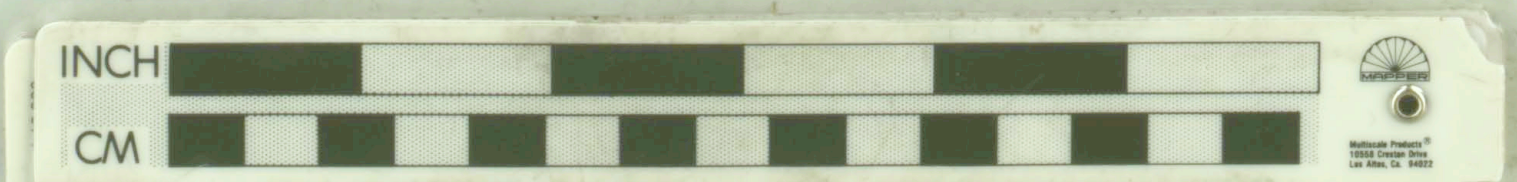
EXPLANATION

Main cross cuts
 South cross cuts
 Vertical elevations
 Dip angles on plane of fault
 measured from 300 foot elevation line

Slope outlines approximate
 main cuts A and B
 Plane of projection approximately vertical
 or strike to Black Butte fault (N 70° W)
 fault dip 60° N E

VERTICAL LONGITUDINAL PROJECTION, BLACK BUTTE MINE, LANE COUNTY, OREGON

UNITED STATES DEPARTMENT OF THE INTERIOR
GEOLOGICAL SURVEY
WASHINGTON, D. C. 20548



42
43
44
45
46
47