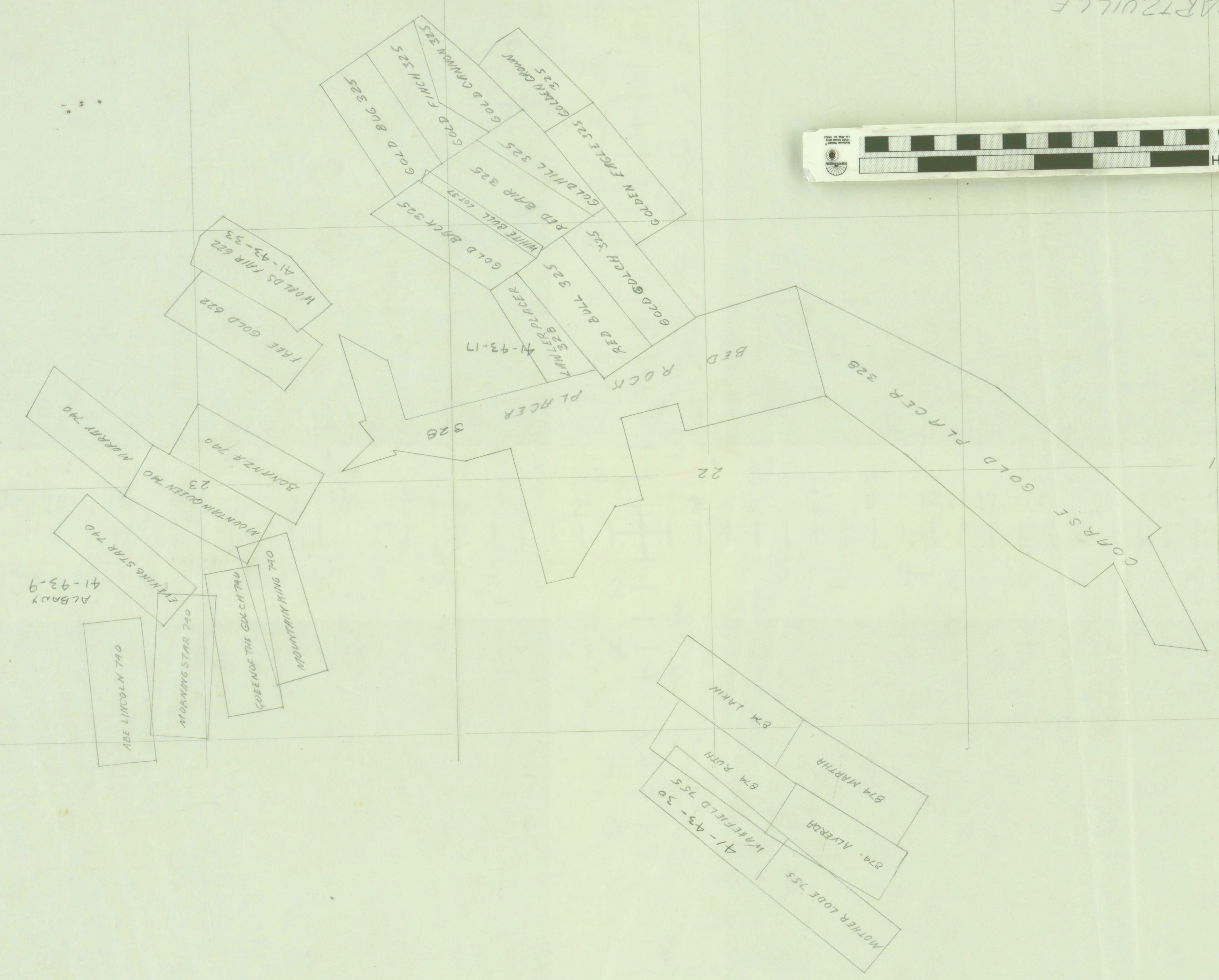
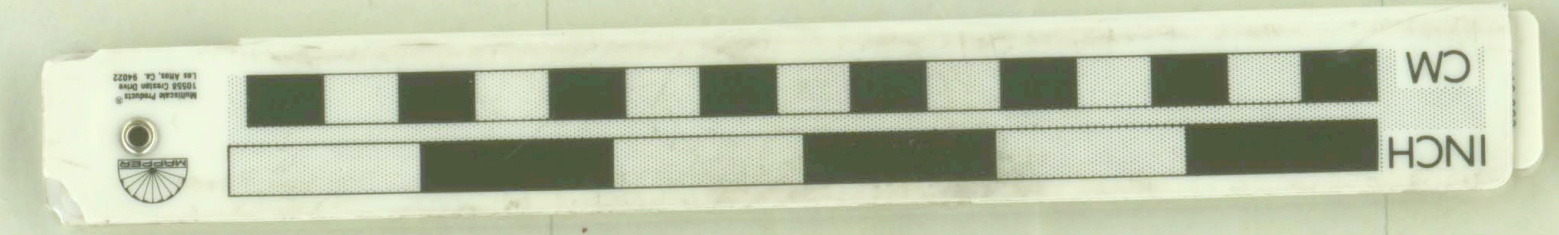


126867

QUARTZVILLE



QUARTZVILLE DISTRICT
T.I.S. R. 4 E

P-18

LIBRARY
OREGON DEPARTMENT OF GEOLOGY
AND MINERAL INDUSTRIES
SUITE 905
300 NE OREGON STREET # 20
PORTLAND, OREGON 97232