

Sketched by  
E. F. B. DAUDE, M. E.  
September 16<sup>th</sup> 1927

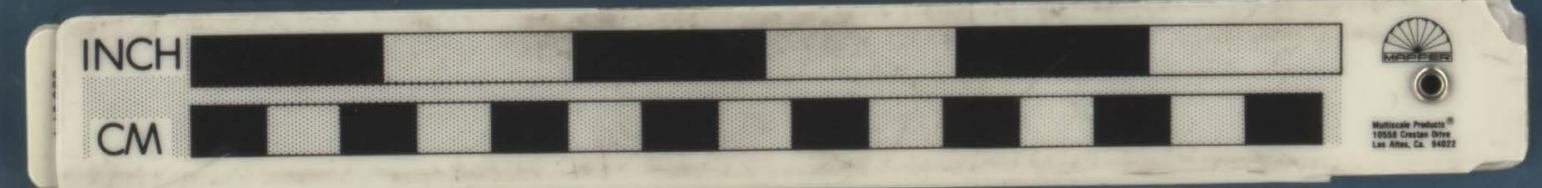
Cross-section  
of  
Topographical  
outlines  
of  
area.

For  
Honey Dome Group  
Mining Claims.  
Douglas County, Oregon.

HONEY DOME MINING CLAIMS.  
DOUGLAS COUNTY, OREGON.

SURVEY OF CLAIMS BY BEN. B. IRVING, C. E.  
GEOLOGICAL MAPPING BY E. F. B. DAUDE, M. E.  
SEPTEMBER, 1927.

Scale 1 in = 500 feet.



P-193

