

LEGEND

- DEEP GRAVEL MINING COMPANY
- SIMMONS-CAMERON-LOGAN
- O. AND W. MINING COMPANY
- LANDS UNDER OPTION
- PLACER CLAIMS LOCATED
- SURFACE ONLY MINED OFF
- MINED OFF TO BED ROCK
- O. & C. OREGON & CALIFORNIA R.R. CO. LANDS
- H.E. HOMESTEAD ENTRY - UNPATENTED
- T. APP. TIMBER APPLICATION - UNPATENTED
- M.E. MINERAL ENTRY - PATENTED
- M.L. MINERAL LOCATION
- ROADS
- DITCHES
- BUILDINGS
- DRILL HOLES
- OUTLET RACES
- NATIONAL FOREST BOUNDARY

ACREAGE

	PATENTED	UNPATENTED	TOTAL
DEEP GRAVEL MINING COMPANY	350.00	410.00	760.00
SIMMONS-CAMERON-LOGAN	1285.44	257.75	1543.19
O. AND W. MINING COMPANY	40.00	636.00	676.00
LANDS UNDER OPTION	600.00	180.00	780.00
PLACER GROUND LOCATED		393.62	393.62
	2273.44	2077.37	4352.82

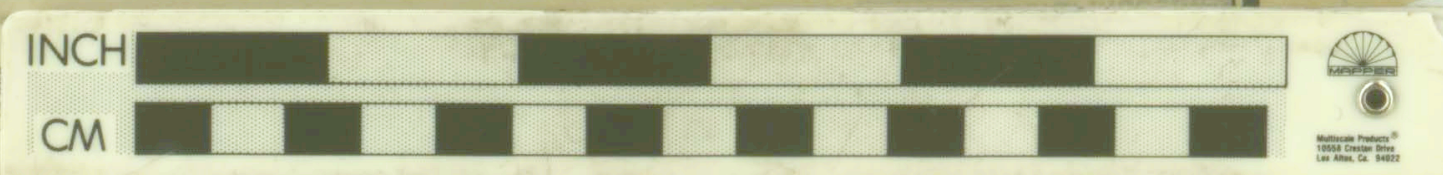
WORKED OUT TO BED ROCK - 129 ACRES.

MAP OF  
WALDO CONSOLIDATED  
GOLD MINING CO.  
OF OREGON

PROPERTY IN WALDO MINING DISTRICT,  
JOSEPHINE COUNTY, ORE.

SCALE 4 IN=1 MILE BY A. H. GUNNELL, WALDO, FEB. 1911.

P-181



430323