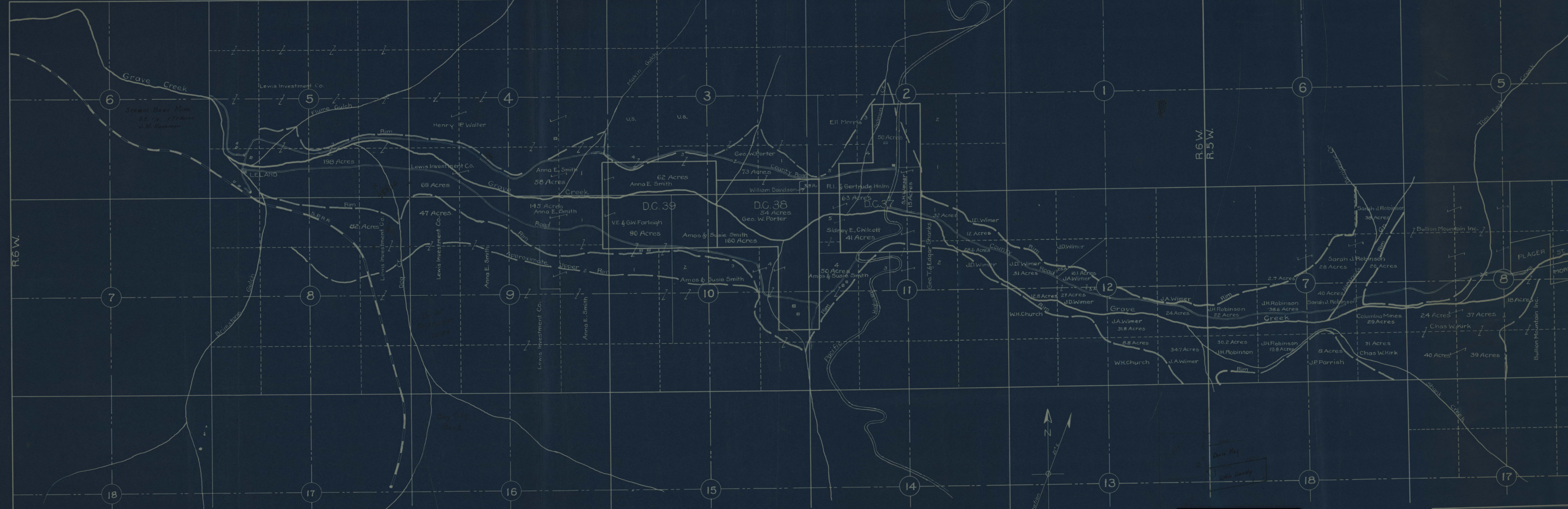
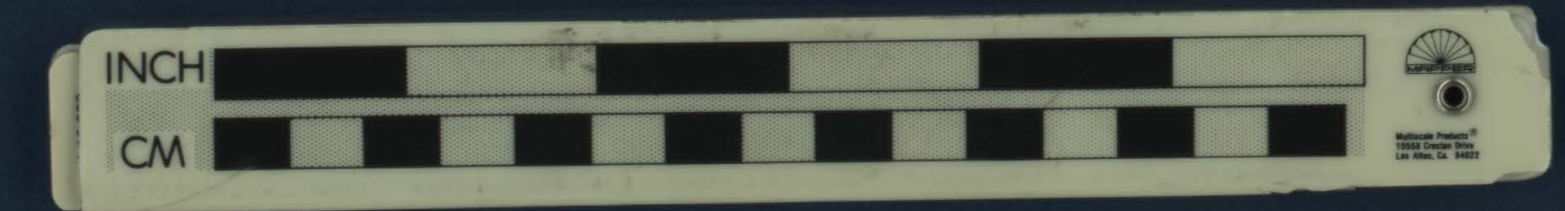


Twp. 34 S.

Twp. 34 S.



431640



Personal property
of
Jesse E. Morrison
Mining Engineer

PACIFIC MINERALS INC.
GRAVES CREEK AREA
JOSEPHINE COUNTY, OREGON
Showing Approximate Acreage
Of Placer Mining Ground
SCALE: 1 inch = 800 ft.
Made by John R. White
Reviewed by W.F. Hayden, Consulting Engr.



41370

PLAN OF THE HULL OF THE
U. S. S. ALBATROSS
DESIGNED BY
JAMES H. WALKER
1872