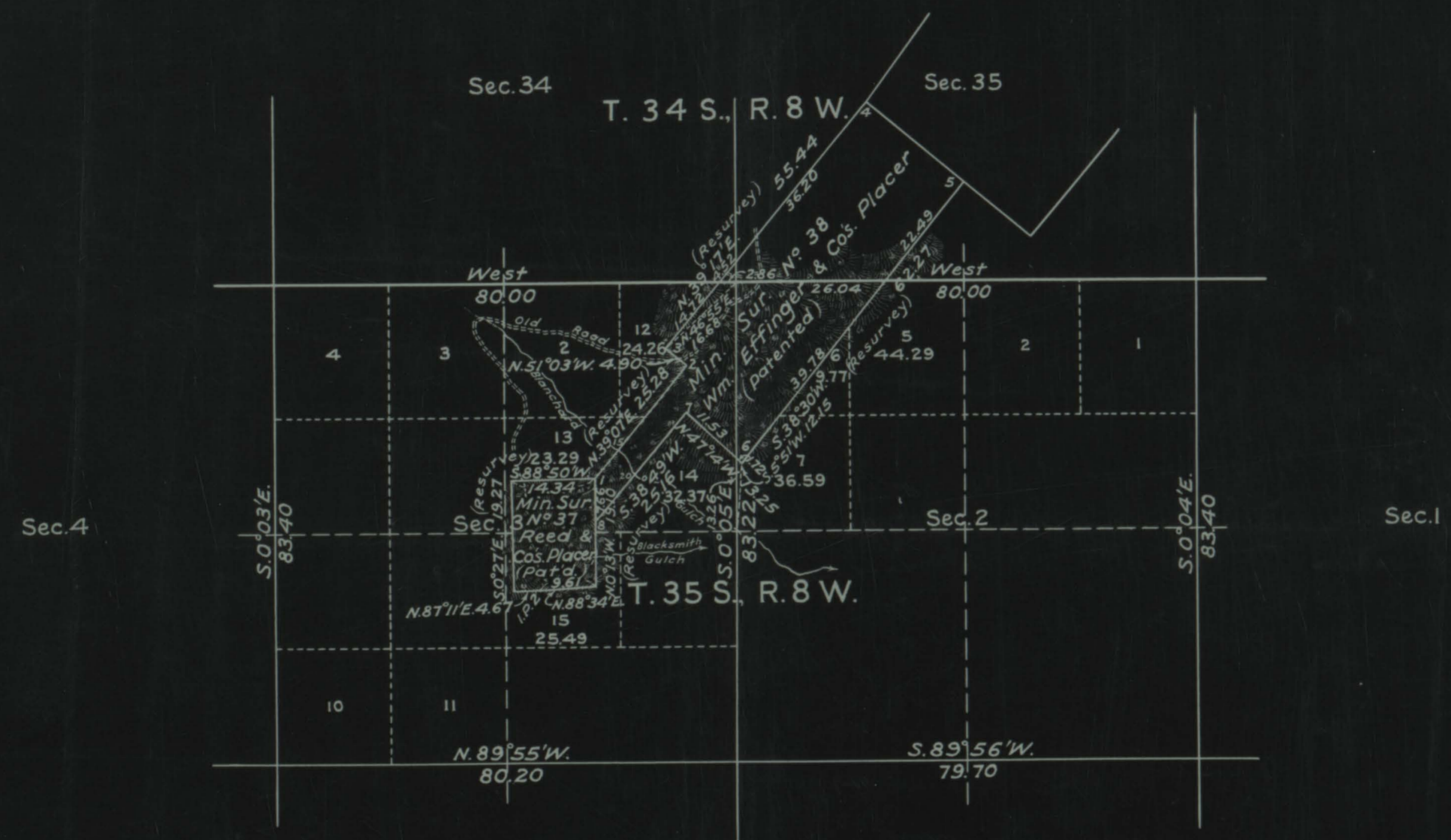
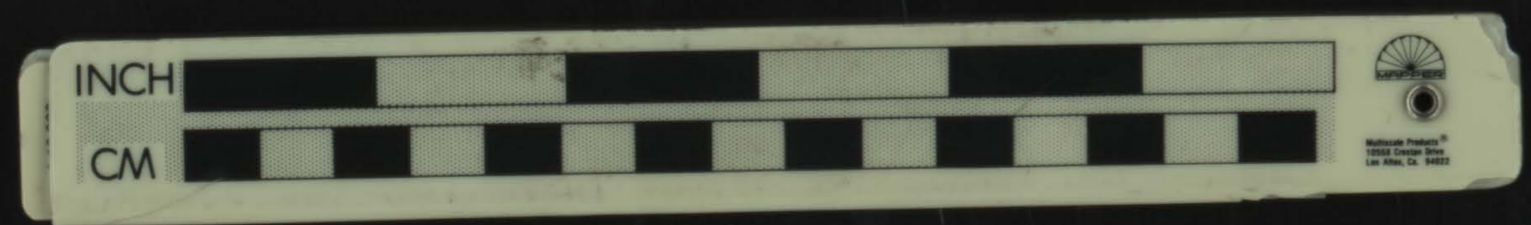


SUPPLEMENTAL PLAT OF SECTIONS 2 & 3, TOWNSHIP N° 35 SOUTH, RANGE N° 8 WEST, WILLAMETTE MERIDIAN, OREGON.

SCALE: 20 CHAINS TO AN INCH.



431646



LINES DESIGNATED	BY WHOM SURVEYED	GROUP		MILEAGE		WHEN SURVEYED	
		N°	DATE	MLS.	CHS.	BEGUN	COMPLETED
MINERAL SURVEYS	JOHN G. COLLINS.	124	APRIL 1, 1927.	2	10.08	OCT. 12, 1927.	OCT. 19, 1927.
CONNECTIONS					44.95		

Office of U.S. Supervisor of Surveys
Denver, Colorado, May 14, 1928.

The above supplemental plat of Sections 2 and 3, Township N° 35 South, Range N° 8 West of the Willamette Meridian, Oregon, is strictly conformable to the field notes of the retracement and resurvey of Min. Sur. N° 37, Reed & Co's. Placer, (Patented) & Min. Sur. N° 38, Wm. Effinger & Co's. Placer, (Patented), which have been examined and approved.

Stanley Johnson
U.S. Supervisor of Surveys.

DEPARTMENT OF THE INTERIOR
GENERAL LAND OFFICE
Washington, D.C., June 30, 1928.

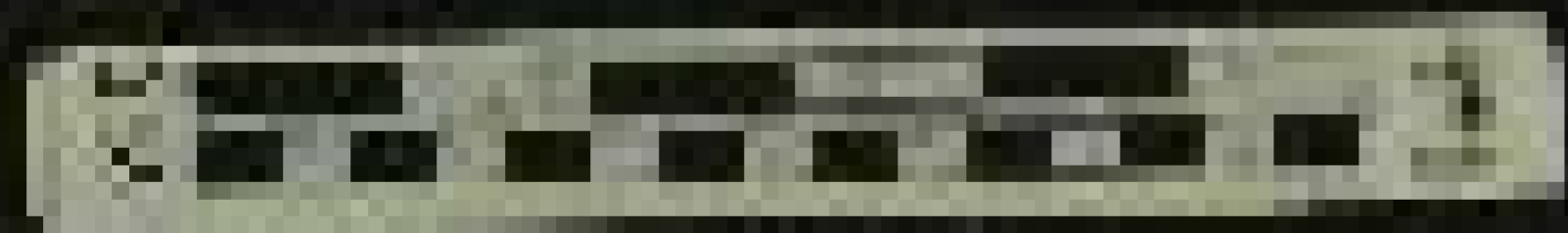
The survey represented by this plat having been correctly executed in accordance with the requirements of law and the regulations of this office, is hereby accepted.

Wm. C. Howell
Assistant Commissioner.

UNIVERSITY OF MICHIGAN LIBRARY
ANN ARBOR, MICHIGAN 48106
SERIALS ACQUISITION
300 N ZEEB RD
ANN ARBOR, MI 48106-1500



47525



UNIVERSITY OF MICHIGAN LIBRARY
ANN ARBOR, MICHIGAN 48106
SERIALS ACQUISITION
300 N ZEEB RD
ANN ARBOR, MI 48106-1500

47525