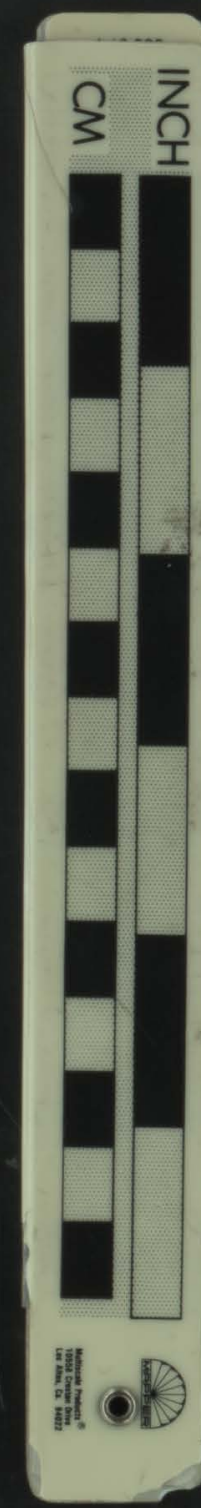
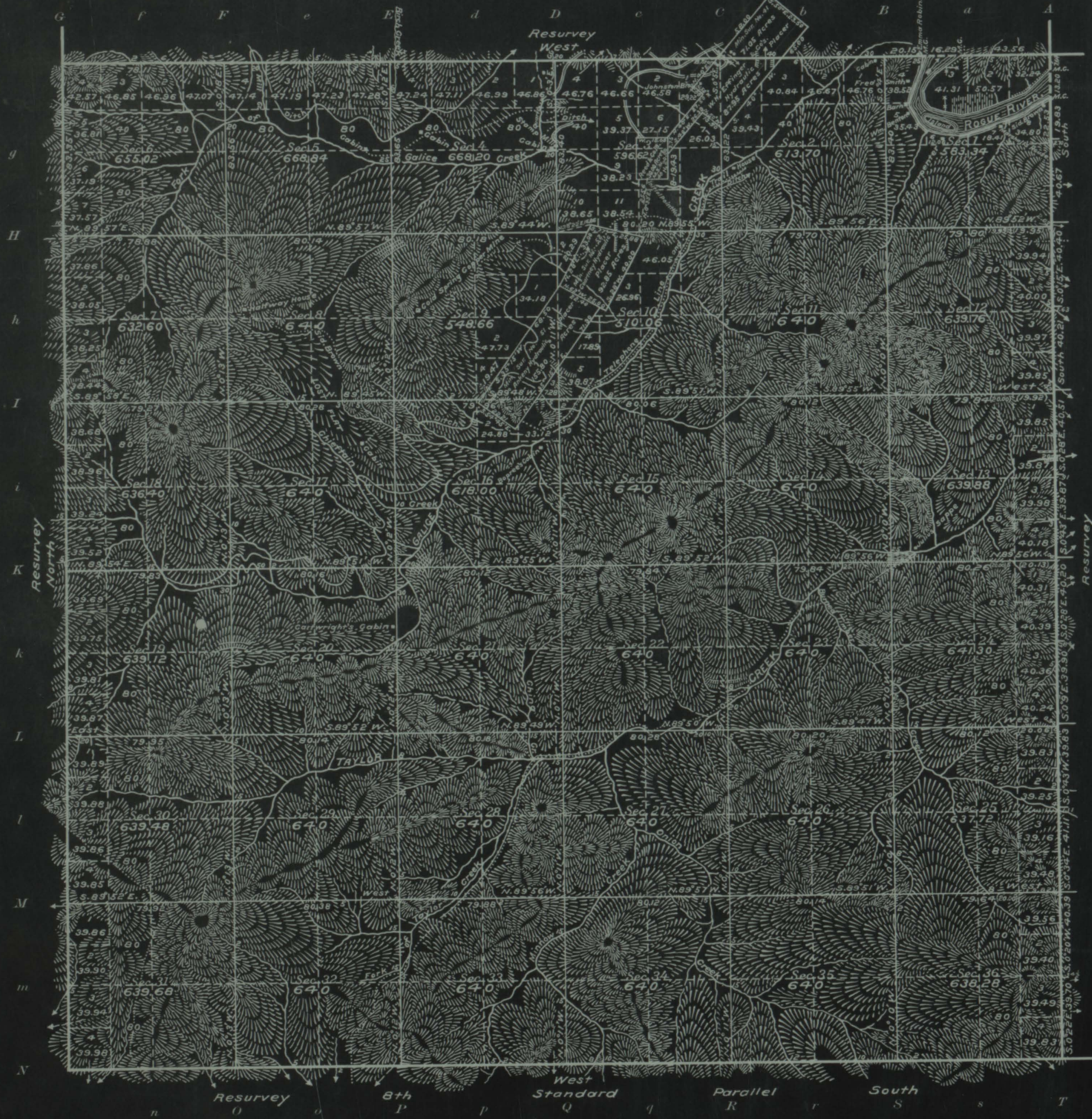


Township No. 35 South Range No. 8 West of the Willamette Meridian, Oregon



Areas in Acres	
Public Land	22726.66
Indian Reservation	
Indian Allotments	
Mineral Claims	366.60
Water Surface	87.74
Total Area	23181.00

Scale 40 Chains to an inch

Mean Magnetic Declination 20°30'E.
Latitude 42°33'N. } Near 1/2 Cor. on N. Bdy. Sec. 1
Longitude 123°38'W.

Surveys Designated	By Whom Surveyed	Group		Amount of Surveys			When Surveyed	
		No.	Date of Instructions	Mls.	chs.	lks.	Begun	Completed
Resurvey N., E., S. and W. Bdrs.	Quinpin Campbell and Thomas D. Daley	33	Sept. 22, 1916	24	4	92	June 19, 1917	July 31, 1917
Subdivisions	" " "	"	" " "	60	16	56	Aug. 1, "	Oct. 9, "
Meanders	" " "	"	" " "	2	38	28	Sept. 26, "	Sept. 28, "
Connections	" " "	"	" " "		42	42	" 8, "	" 8, "
East Boundary	Rufus S. Moore	under	Contract No. 504				in 1884	
N., S. and W. Bdrs.	John H. Huffer Sr.	"	"			509	" 1884	

The above map of Township No. 35 South Range No. 8 West of the Willamette Meridian, Oregon is strictly conformable to the field notes of the survey thereof on file in this office, which have been examined and approved

U. S. Surveyor General's Office.
Portland, Oregon, May 20, 1918

Edward W. Smith
Surveyor General of Oregon.

431647

