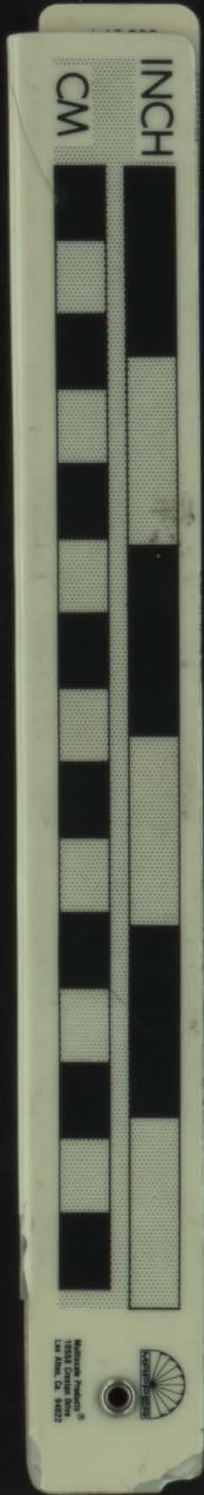


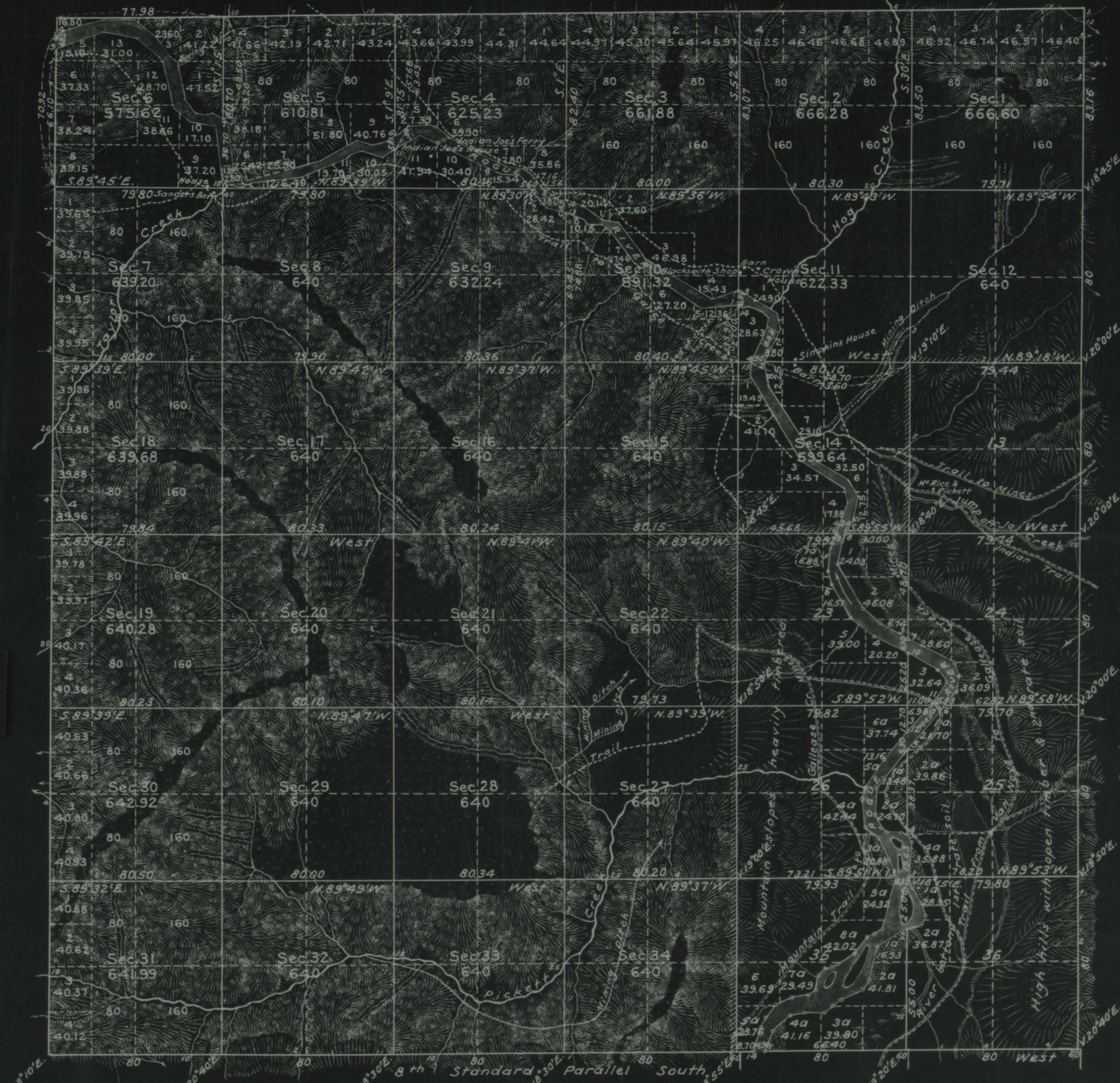
Township No. 35 South, Range No. 7 West, of the Willamette Meridian, Oregon.



431648

The above map of the remainder of the subdivisions and meanders of Township No. 35 South, of Range No. 7 West, of the Willamette Meridian, Oregon, is strictly conformable to the field notes of the survey thereof on file in this Office, which have been examined and approved.
 U.S. Surveyor General's Office,
 Portland, Oregon,
 March 31, 1885.

(signed) James C. Tolman,
 Surveyor General of Oregon.



Cont. 504 Accepted by the Hon. Commissioner G.L.O. May 12, 1885.

True Meridian
 Mean Variation from 18°10' to 20°40'
 Mean Var. of New Survey 19°27'30"
 Scale 40 Chains to 1 Inch.

Area of Public Lands 18,416.02 Acres. of Water Surface 243.04 Acres. Total number of Acres of New Survey 18,659.06

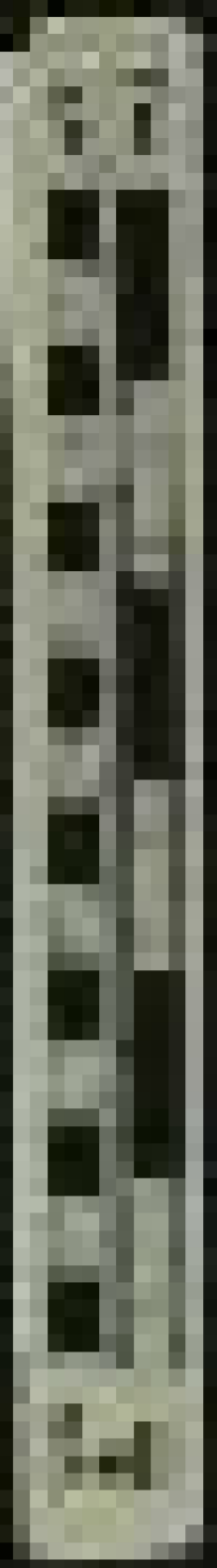
Surveys Designated	By Whom Surveyed	Contract		Amount of Surveys			When Surveyed
		No.	Date	Miles	Chains	Links	
Subdivisions	Lake & Hyde	54	February 19 th , 1855	13	78	35	March 31 st , 1856
Meanders	do do	"	" "	8	18	76	March 31 st , 1856
Reclaiming Std. Parallel	do do	"	" "	2	00	00	March 31 st , 1856
		Total number of acres		4,236.79			
Subdivisions	Rufus S. Moore	504	May 27 th , 1884.	46	14	05	June 18-27, 1884
Meanders	" "	"	" "	13	25	31	June 29-July 3, 1884

The above Map of Township No. 35 South, of Range No. 7 West, of the Willamette Meridian, Territory of Oregon, is strictly conformable to the field notes of the survey thereof on file in this Office which have been examined and approved.
 Surveyor General's Office,
 Salem, O.T., March 31st, 1856.

(signed) C. K. Gardner,
 Surv. Gen. of Oregon.

Public Survey Office,
 Portland, Oregon,
 September 9, 1935.
 I certify this to be a correct
 copy of the original plat on file in
 this office.

Joseph A. Guany
 Office Cadastral Engineer.



9 21 52 8

Handwritten notes in the bottom right corner, including a signature and date.