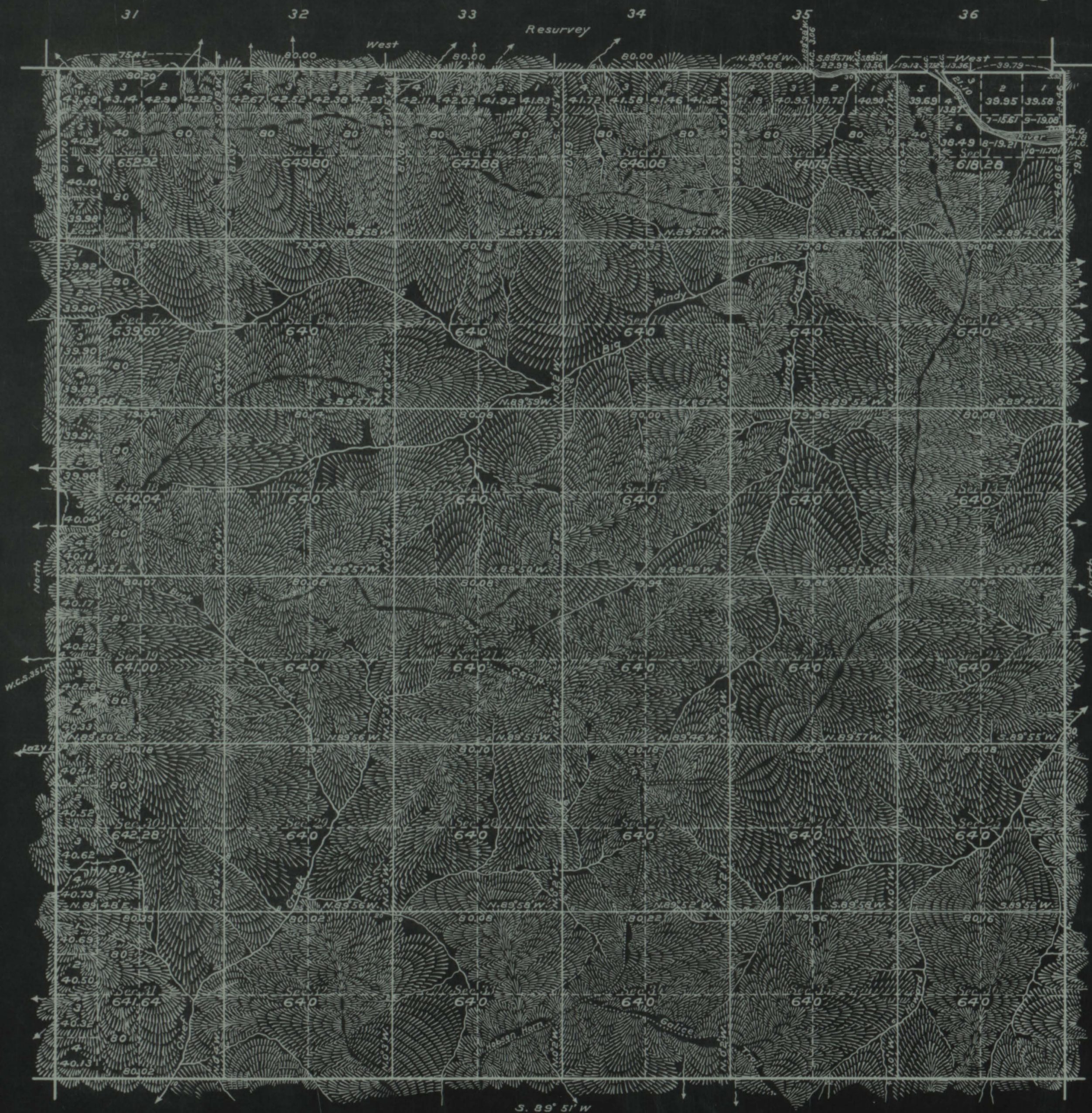
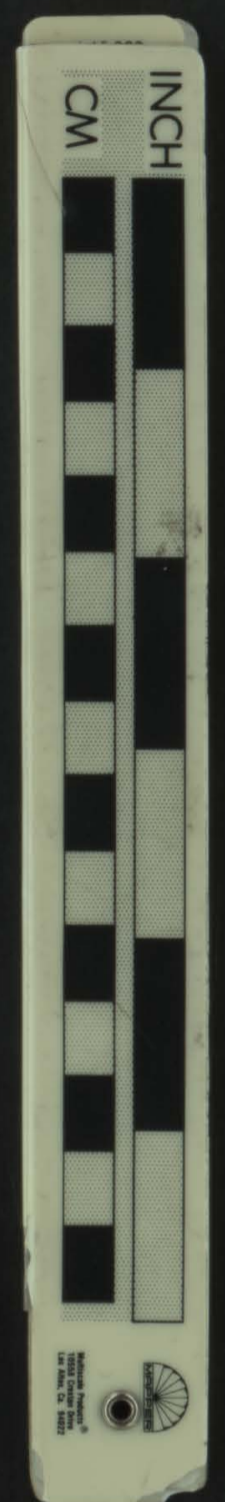


# Township No 34 South Range No 9 West of the Willamette Meridian, Oregon



431649



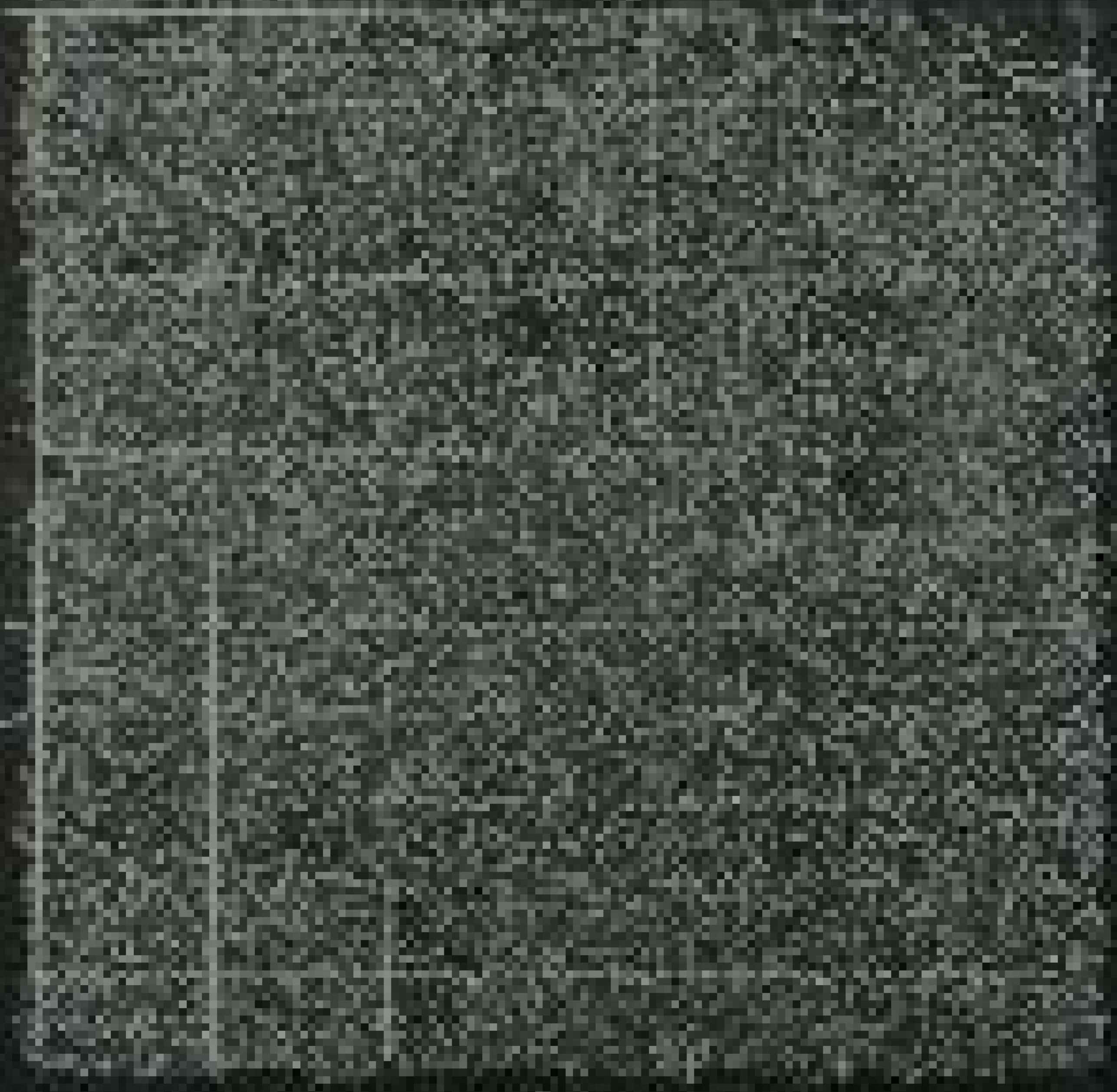
Areas in Acres	
Public Land	23061.27
Indian Reservation	
Indian Allotments	
Mineral Claims	
Water Surface	22.28
<b>Total Area</b>	<b>23083.55</b>

Scale 40 Chains to an inch  
 Mean Magnetic Declination 20°30'E.  
 Latitude 42°39.4'N. } Near Cor. Secs. 1 and 2  
 Longitude 123°42.4'W } on N. Bdy. of Tp.

Surveys Designated	By Whom Surveyed	Group		Amount of Surveys			When Surveyed	
		No.	Date	Mls.	chs.	ths.	Begun	Completed
Resurvey North Bdy.	Gerald A. Sorrels	34	October 7, 1916	6	0	20	July 13, 1919	Aug. 29, 1919
West Boundary	" " "	"	" " "	6	1	70	July 6, 1918	Aug. 13, 1918
Subdivisions	" " "	"	" " "	60	6	77	June 17, 1918	Aug. 29, 1919
Meanders	" " "	"	" " "	2	14	12	July 11, 1919	July 12, 1919
Portion North Bdy.	Fred Mensch	35		in			1917	
" "	E. P. Rands	under Contract		No	775		in 1909	
East Boundary	J. H. Huffer Sr.	"	"	"	509		in 1894	
South "	F. W. Rodolf G. A. Sorrels	34		"			in 1918	

The above map of Township No. 34 South Range No. 9 West of the Willamette Meridian Oregon is strictly conformable to the field notes of the survey thereof on file in this office, which have been examined and approved  
 U. S. Surveyor General's Office.  
 Portland, Oregon, April 12, 1920

*Edward Worth*  
 Surveyor General.



4114

