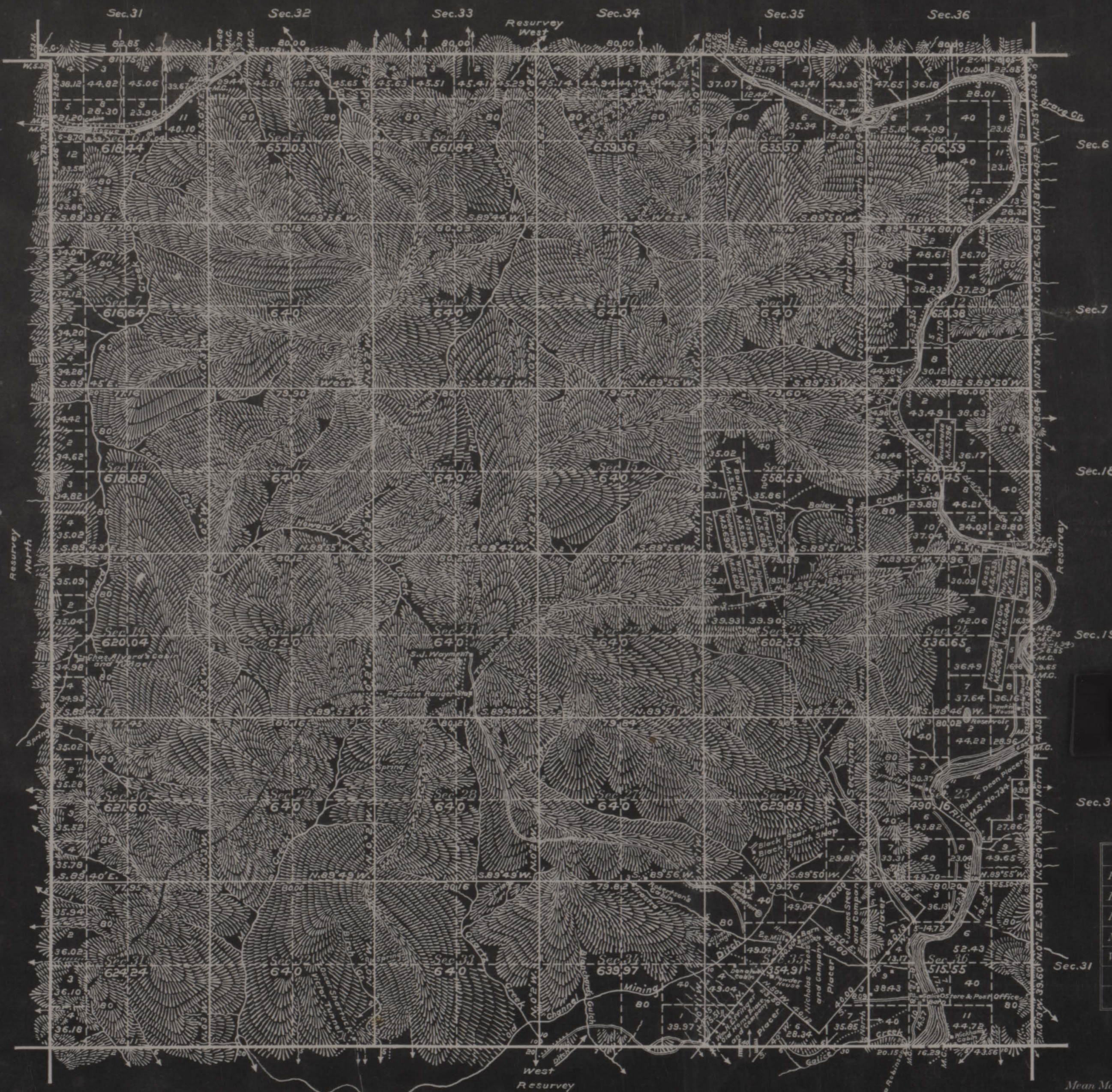


Township No. 34 South Range No. 8 West of the Willamette Meridian, Oregon



431673

Areas in Acres	
Public Land	22069.16
Indian Reservation	
Indian Allotments	
Mineral Claims	710.16
Water Surface	538.82
Total Area	23318.14

Scale 40 Chains to an inch

Mean Magnetic Declination
Latitude 42°34'3"N } Near NE. corner of Sec. 27
Longitude 123°44'32"W }

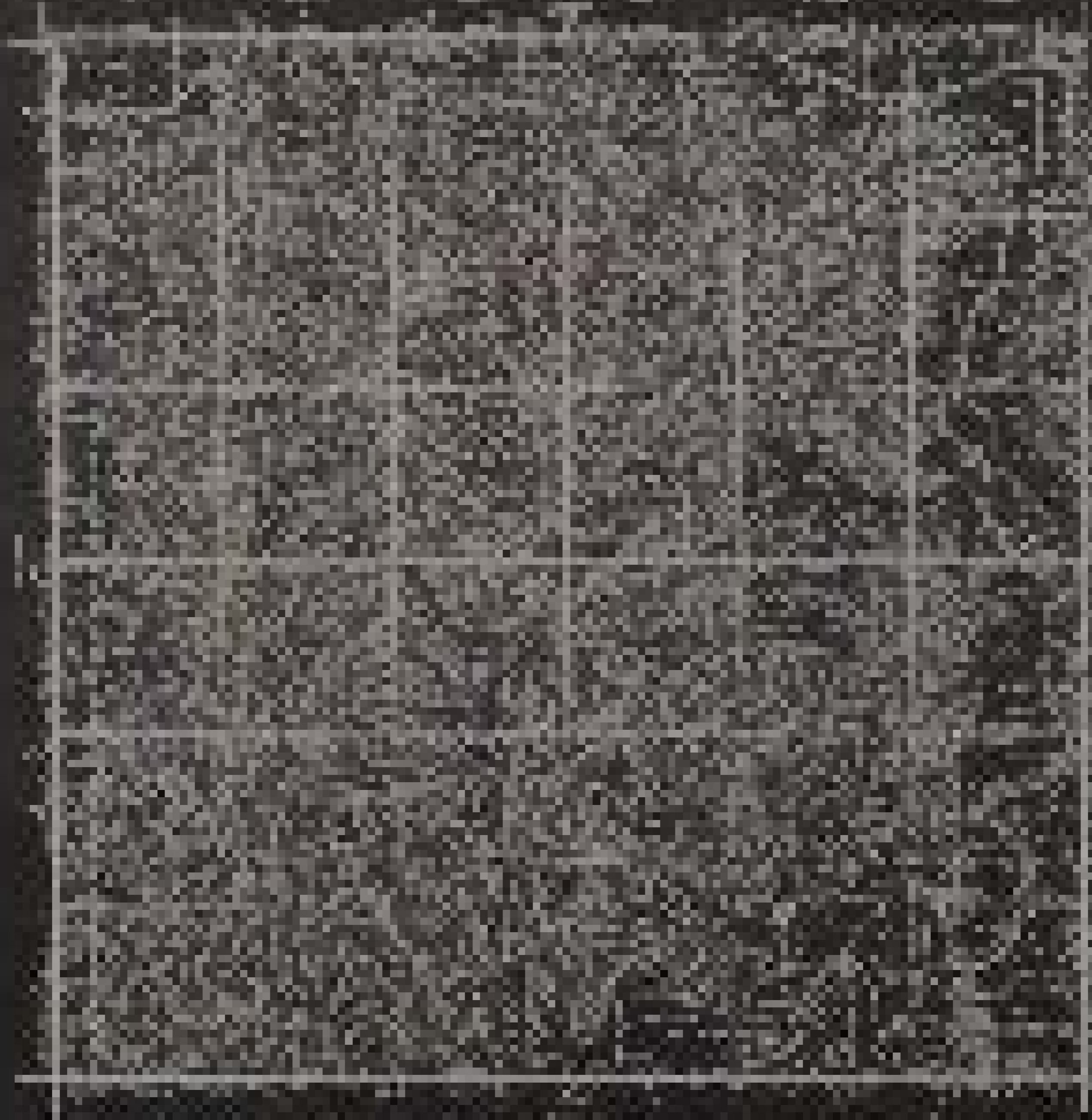
Surveys Designated	By Whom Surveyed	Group		Amount of Surveys			When Surveyed	
		No.	Date	Mls.	chs.	lks.	Begun	Completed
Resurvey N., E. and W. Bdrs.	Quintin Campbell	18	4	22			Sept. 26, 1917	Sept. 18, 1919
Subdivisions	Thos. D. Daley	59	78	89			Oct. 4, 1917	Aug. 8, 1919
Meanders	Gerald A. Sorrels	33	Sept. 22, 1916	19	50	60	Oct. 2, 1917	Aug. 29, 1919
Connections	Ira F. Shafner			12	34		July 12, 1919	Sept. 9, 1919
	Norman D. Price							
N., E. and W. Bdrs.	John H. Huffer Sr.		under Contract	No.	509		in	1884
South Bdy.	Quintin Campbell		Group	"	33		"	1917

The above map of Township No. 34 South Range No. 8 West of the Willamette Meridian Oregon is strictly conformable to the field notes of the survey thereof on file in this office, which have been examined and approved

U. S. Surveyor General's Office.
Portland, Oregon, April 9, 1920

Edward Worth
Surveyor General.





211573
