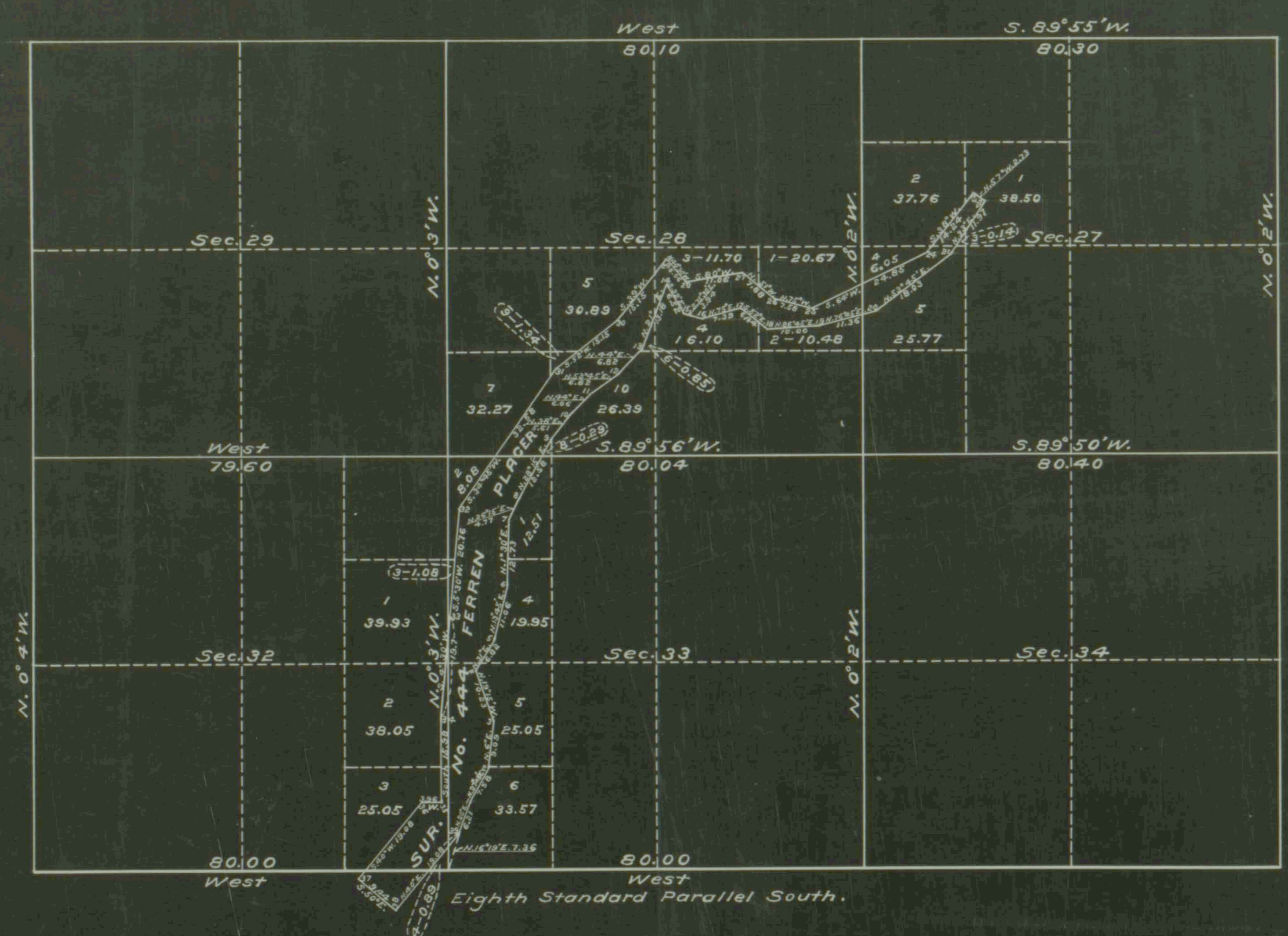


Accepted September 3, 1919, U.S.G.O.

Supplemental Plat  
of  
Sections 27, 28, 32 & 33 - Township N<sup>o</sup> 35 South Range N<sup>o</sup> 9 West of the Willamette Meridian, Oregon  
(Superseding plat of said sections approved February 5, 1919)  
Scale 20 chains to an inch.



26 24 22  
| | | |  
27 25 23

22 24  
| | | |  
21 23 25

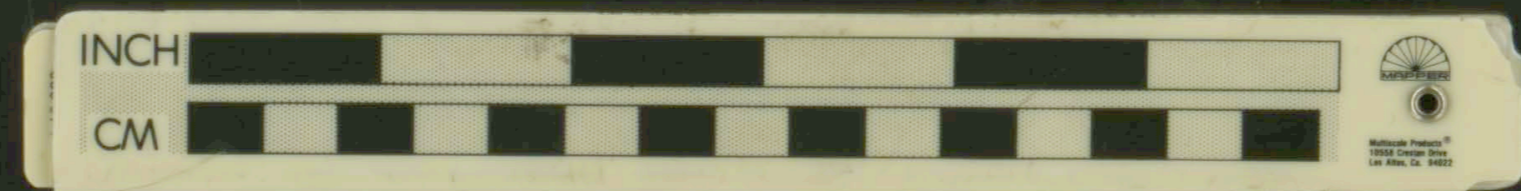
See plat of MSN 693  
T 36 S. R. 9 W. for  
undivided Ferren Place

431674

Office of U. S. Surveyor General,  
Portland, Oregon, July 21, 1919.

This Supplemental Plat showing the areas and legal designation of lots in Sections 27, 28, 32 and 33, T. 35 S., R. 9 W. of the Willamette Meridian, Oregon, is made for the purpose of showing the segregation of mineral survey No. 444, Ferren Place; prepared in compliance with instructions from the Hon. Asst. Commissioner of the General Land Office contained in letter "B" dated June 6, 1919.

*Edward Worth*  
U. S. Surveyor General of Oregon.



E.C.T.

18 —  
— 19  
20 —  
— 21  
22 —