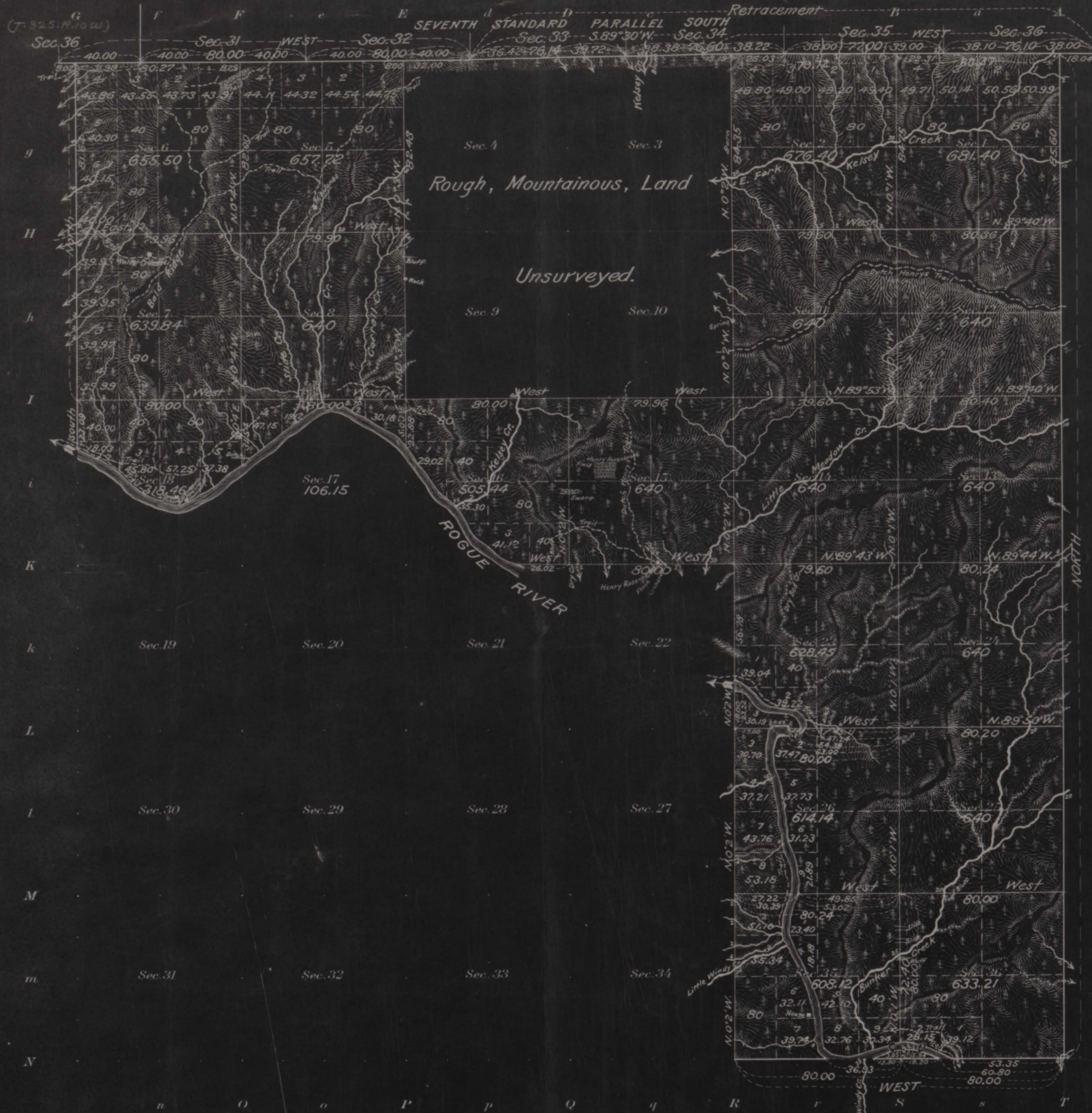
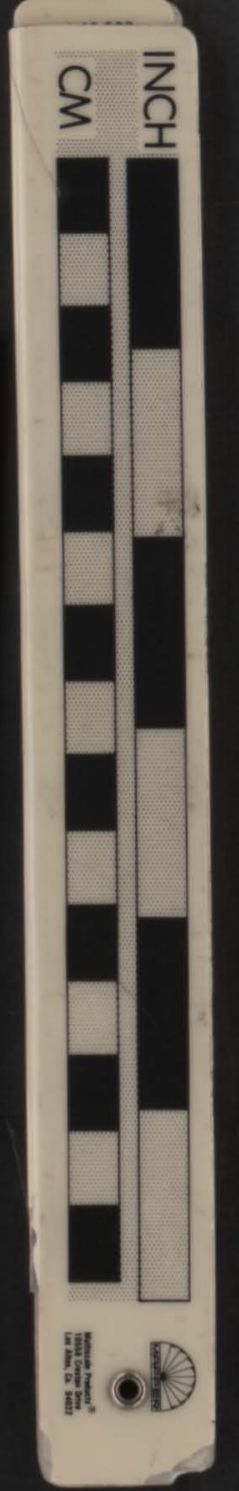


Township N^o 33 South, Range N^o 9 West of the Willamette Meridian, Oregon.



431678



ACCEPTED BY THE HON. COMMISSIONER G. L. O. JUL 19 1912

Areas in Acres	
Public Land	
Indian Reservation	
Indian Allotments	
Mineral Claims	
Water Surface	
Total Area	11844.83

Scale 40 Chains to an Inch

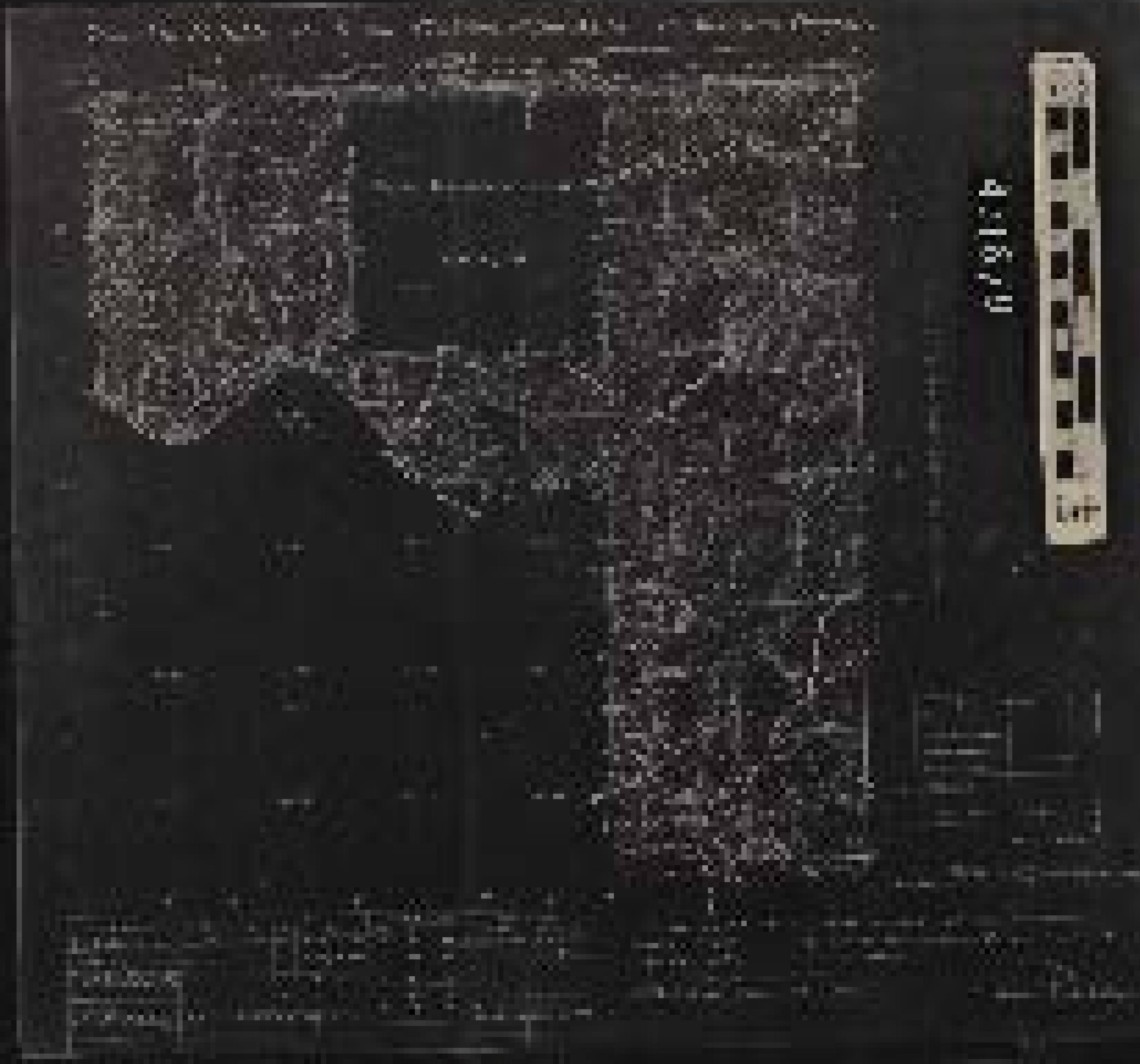
Latitude 47° 38' N.
Longitude 123° 41' W. At Cor. of Secs. 1, 2, 35 and 36
Mean Magnetic Declination 20° E.

Surveys Designated	By Whom Surveyed	Contract			Amount of Surveys			When Surveyed	
		No.	Date		Mls.	chs.	lks.	Begun	Completed
Township Lines South, East & West Boundaries	Ernest P. Rands-Compassman	775	January 31, 1908	10	30	33	October 4, 1909,	April 10, 1911.	
Subdivisions	"	"	January 31, 1908	35	14	03	" 7 "	" 15 "	
Retracement of S. Boundaries of Secs. 33, 34, 35 & 36, T ^o 33 S., R. 9 W., or 7 th Standard Parallel South	"	"	" " "	3	65	84	" " "	" " "	
Connections	"	"	" " "		51	79	" " "	" " "	
Meanders North Boundary of T ^o or 7 th Standard Parallel South (Orig.)	Richmond S. Dickerson	474	May 10, 1883	10	15	70	May 23, 1883,	June 5, 1883.	

The above map of Township No. 33 South Range No. 9 West of the Willamette Meridian Oregon is strictly conformable to the field notes of the survey thereof on file in this office, which have been examined and approved
U. S. Surveyor General's Office.
Portland, Oregon January 20. 1912

Grand
Surveyor General for Oregon.

14-24-23
11-1-11
13-77-43



4.1879

14-24-23
11-1-11
13-77-43

14-24-23
11-1-11
13-77-43