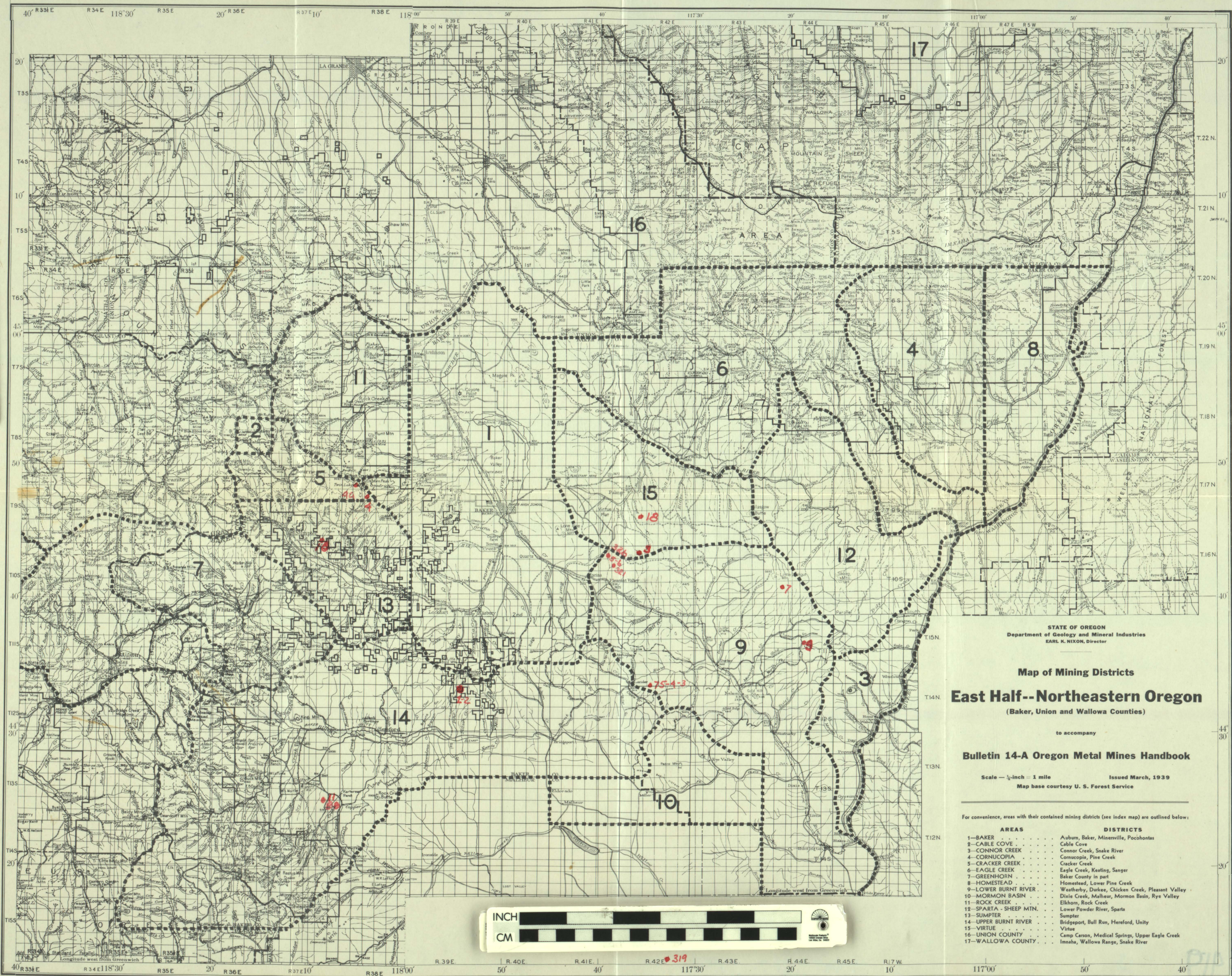


431703



STATE OF OREGON
Department of Geology and Mineral Industries
EARL K. NIXON, Director

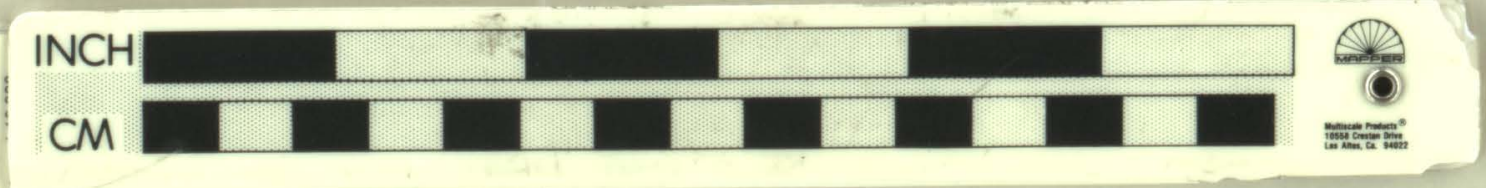
Map of Mining Districts East Half--Northeastern Oregon (Baker, Union and Wallowa Counties)

to accompany
Bulletin 14-A Oregon Metal Mines Handbook

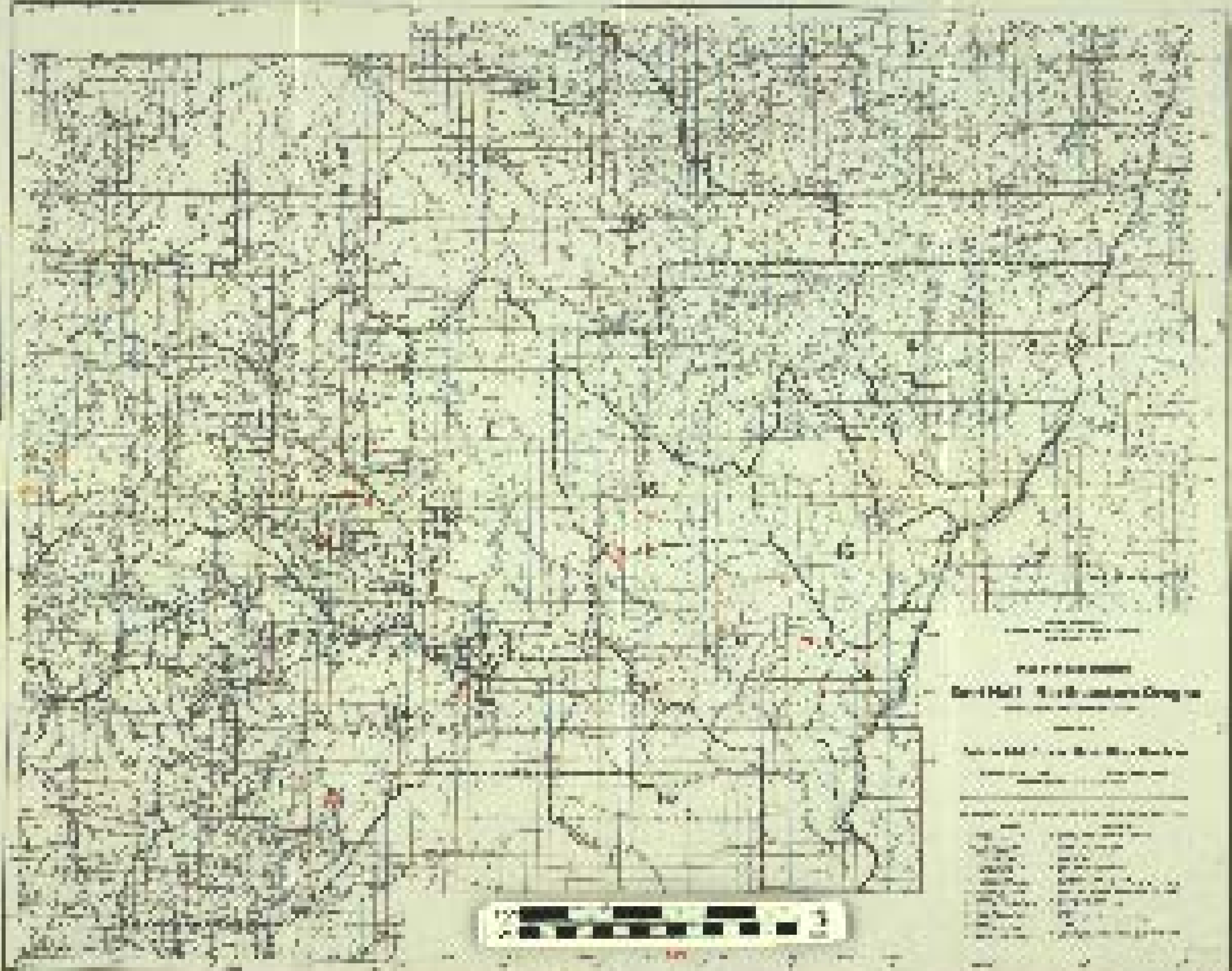
Scale — 1/4-inch = 1 mile
Issued March, 1939
Map base courtesy U. S. Forest Service

For convenience, areas with their contained mining districts (see index map) are outlined below:

AREAS	DISTRICTS
1—BAKER	Auburn, Baker, Minersville, Pocohontas
2—CABLE COVE	Cable Cove
3—CONNOR CREEK	Connor Creek, Snake River
4—CORNUCOPIA	Cornucopia, Pine Creek
5—CRACKER CREEK	Cracker Creek
6—EAGLE CREEK	Eagle Creek, Keating, Sanger
7—GREENHORN	Baker County in part
8—HOMESTEAD	Homestead, Lower Pine Creek
9—LOWER BURNT RIVER	Weatherby, Dukee, Chicken Creek, Pleasant Valley
10—MORMON BASIN	Dixie Creek, Malheur, Mormon Basin, Rye Valley
11—ROCK CREEK	Elkhorn, Rock Creek
12—SPARTA—SHEEP MTN.	Lower Powder River, Sparta
13—SUMPTER	Sumpter
14—UPPER BURNT RIVER	Bridgeport, Bull Run, Herford, Unity
15—VIRTUE	Virtue
16—UNION COUNTY	Camp Carson, Medical Springs, Upper Eagle Creek
17—WALLOWA COUNTY	Innaha, Wallowa Range, Snake River



31102



Map of the United States
North Pacific Coast

- Scale 1:50,000
- Projection: Lambert Conformal Conic
- Zone: 10N
- Central Meridian: 123°W
- Standard Meridians: 120°W, 126°W
- False Easting: 500,000 meters
- False Northing: 0 meters
- Ellipsoid: Clarke 1866
- Spheroid: Clarke 1866
- Flattening: 1/294.96
- Prime Meridian: Greenwich
- Datum: North American 1983
- Units: Meters