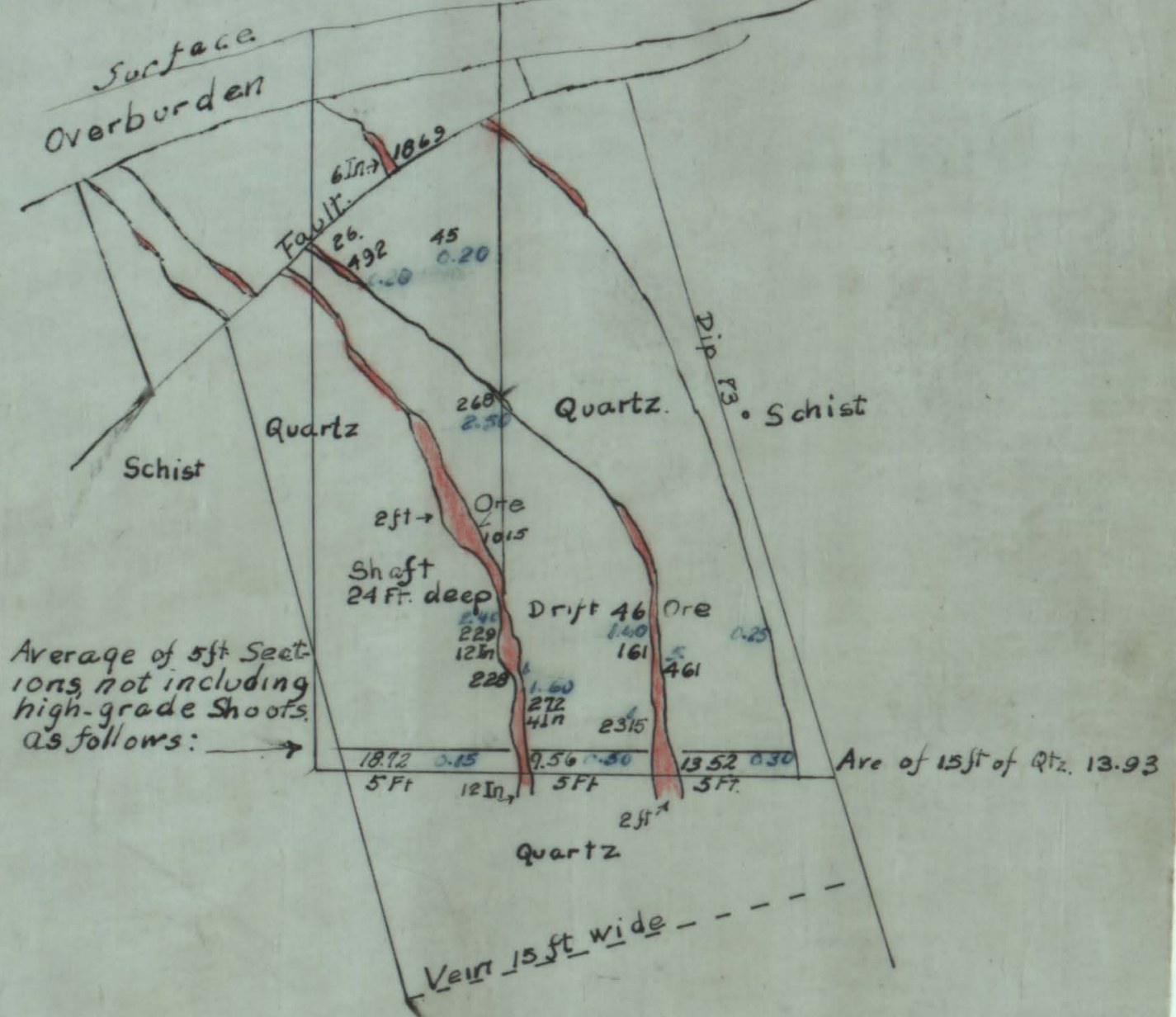
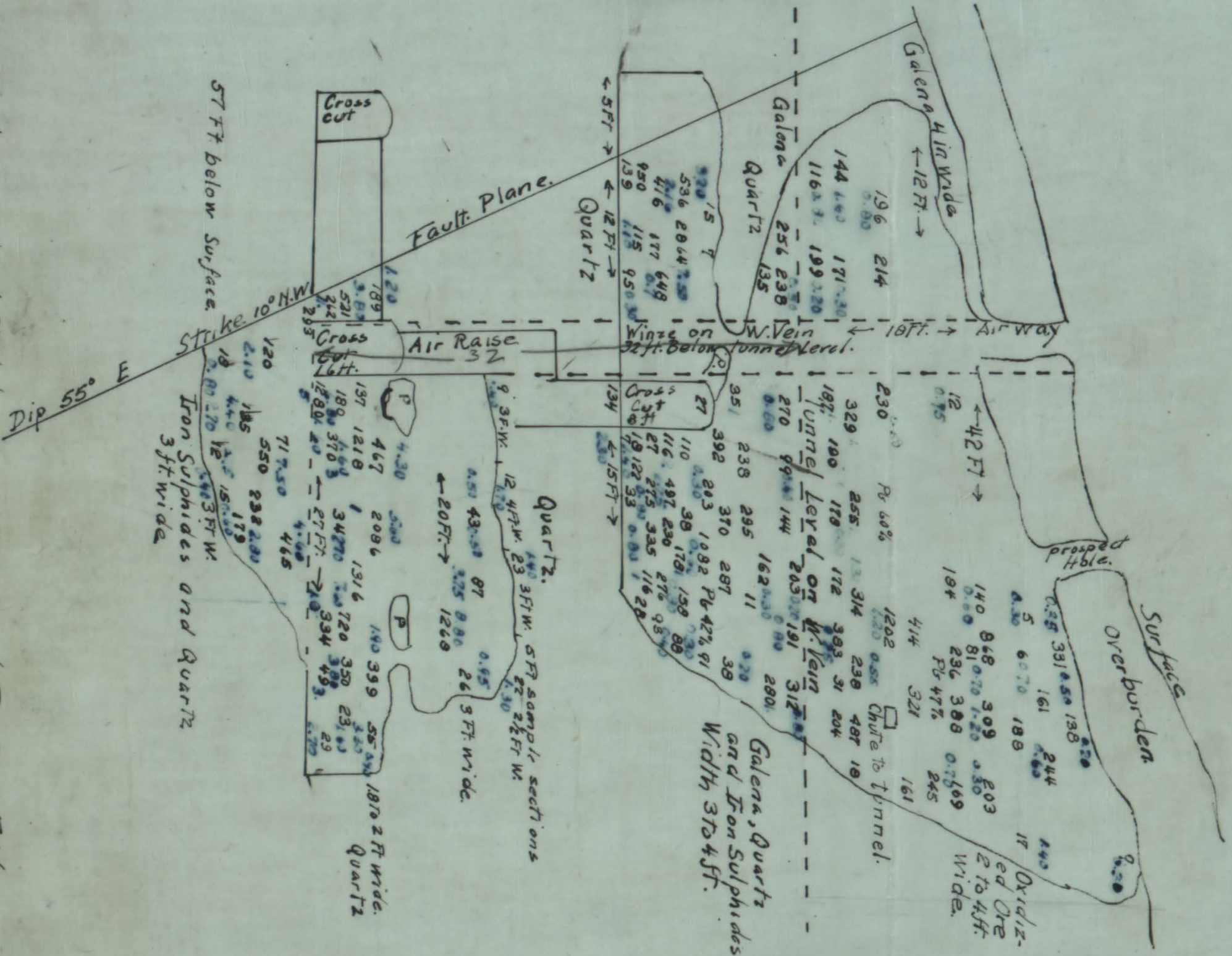


431706

885.9

P indicates pillars.
 Numbers in black indicate silver in ounces per ton.
 Numbers in blue indicate gold in ounces per ton.
 Amount of ore extracted from above area 59 tons.
 Average metal content as follows:
 Au, 0.94 oz Ag 26.4 oz Pb 93.97

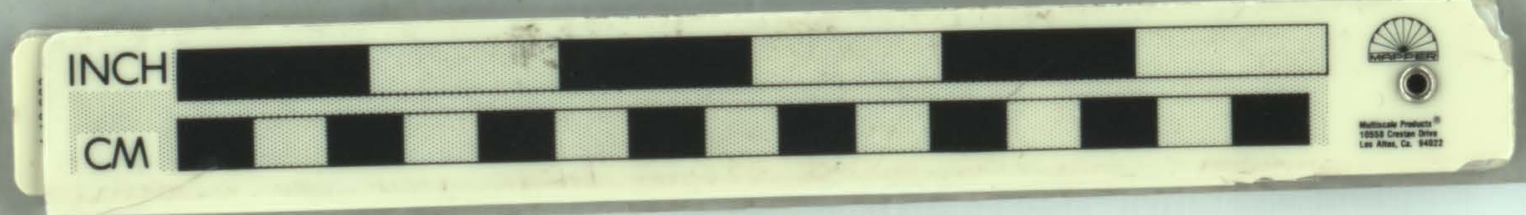
Longitudinal Sketch Showing Stopped Part of E Vein.
 Red Top Mine.
 Scale: Approx 8ft. = 1 in

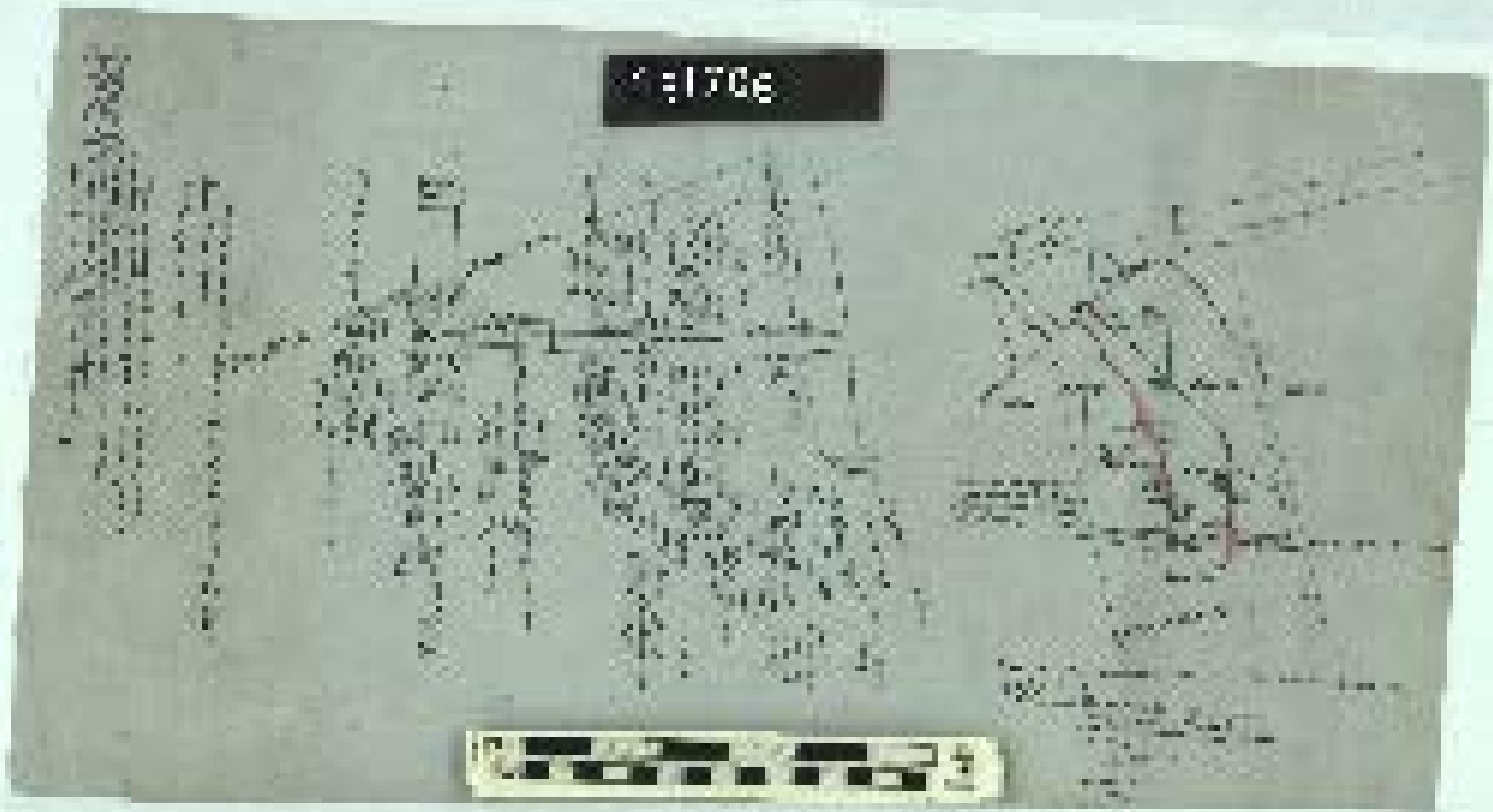


Sketch Map showing cross section of Red Top Vein at Quigley Shaft.

Heavy Red indicates shipping ore.
 Black numbers indicate silver and blue numbers gold, in ounces per ton

Scale 2ft = 1"
 Albert Johnson
 1923.





1706