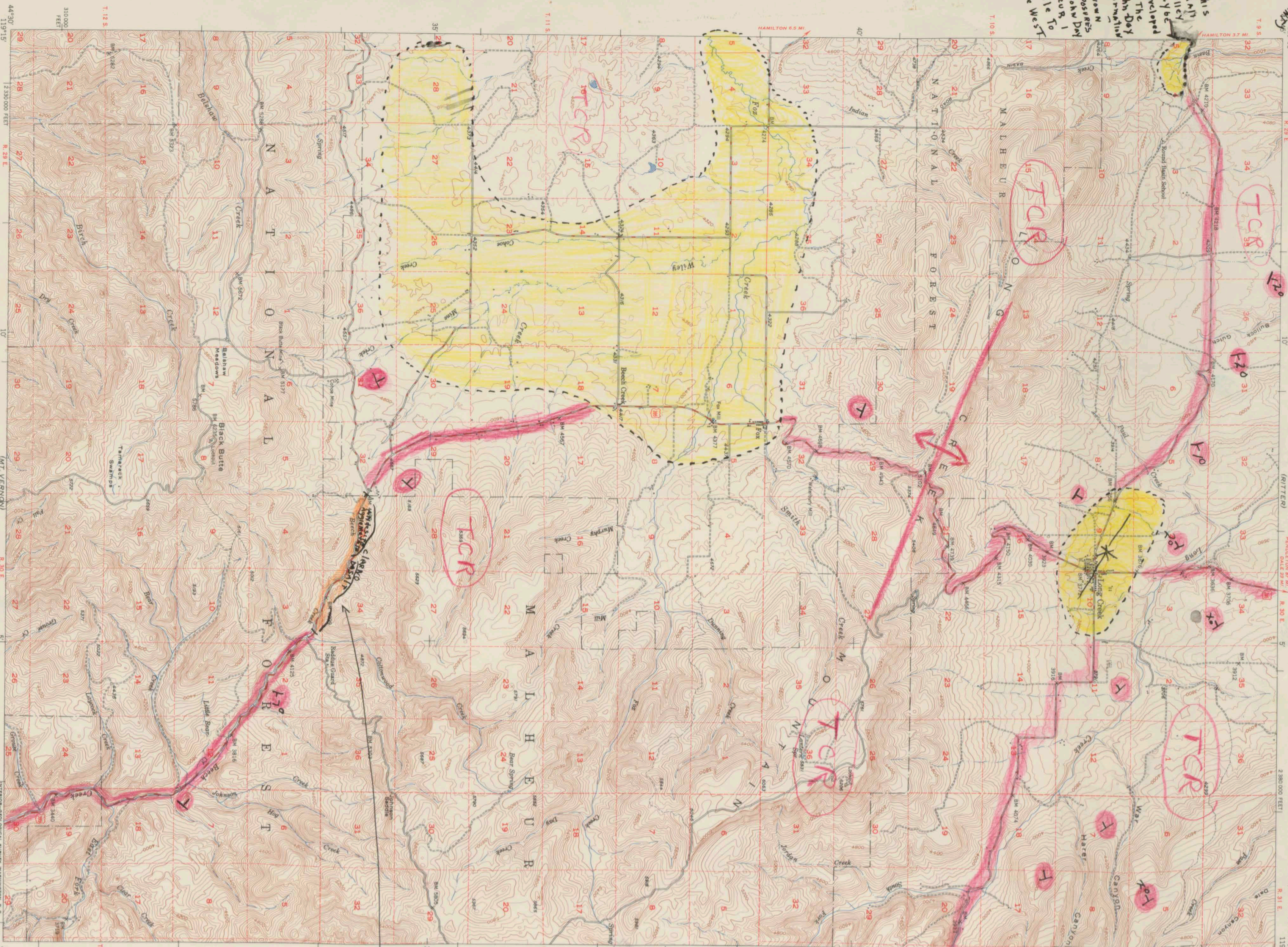


THIS
SMALL
VALLEY
MAY BE
DEVELOPED
ON THE
EARTH DAY
FORMATION
KNOWN
EXPOSURE
OF JOHN DAY
OCCUR 1
MILE TO
THE WEST



THE TOWN OF
LONG CREEK IS
IN A STRUCTURAL
BASIN ON COLUMBIA
RIVER BASALT.
THE ASW BEDS
AND ALLUVIUM WHICH
FILLED THE BASIN
ARE NOW BEING
ERODED AWAY BY
THE DOWNCUTTING OF
LONG CREEK.

Long Creek Mt. is
Anticlinal.

FOX VALLEY IS
A LARGE
STRUCTURAL BASIN
WHEREIN THE
COLUMBIA RIVER
BASALT IS COVERED
BY ALLUVIUM, TUFFS
ETC WHICH ARE
NOW BEING EXHUMED
BY FOX CREEKS
DRAINAGE

CLARNO APPEARS
IN CORE OF ANTICLINE
Extent of CLARNO
EXPOSURE NOT KNOWN
but needs checking.
Except for THIS
most of quadrangle
appears to be Columbia
River BASALT.
= Valley fill
= Ter = Columbia
River BASALT
= Clarno fm

Geology by
L. F. HINTZE
SEPT 1952

Map of the Long Creek Quadrangle, Oregon-Grant County, showing geological features and topographic details. The map includes contour lines, streams, and various geological units. Hand-drawn annotations include a thick pink line tracing a path through the center, several yellow-shaded areas, and red circles containing the letters 'TCR'. A legend at the bottom left explains the symbols for geological features like 'Valley fill', 'Columbia River Basalt', and 'Clarno fm'. A scale bar and north arrow are also present.

FOR SALE BY U. S. GEOLOGICAL SURVEY, FEDERAL CENTER, DENVER, COLORADO OR WASHINGTON 25, D. C.
A FOLDER DESCRIBING TOPOGRAPHIC MAPS AND SYMBOLS IS AVAILABLE ON REQUEST.

LONG CREEK, OREG.
N4430-W11900/15
EDITION OF 1951