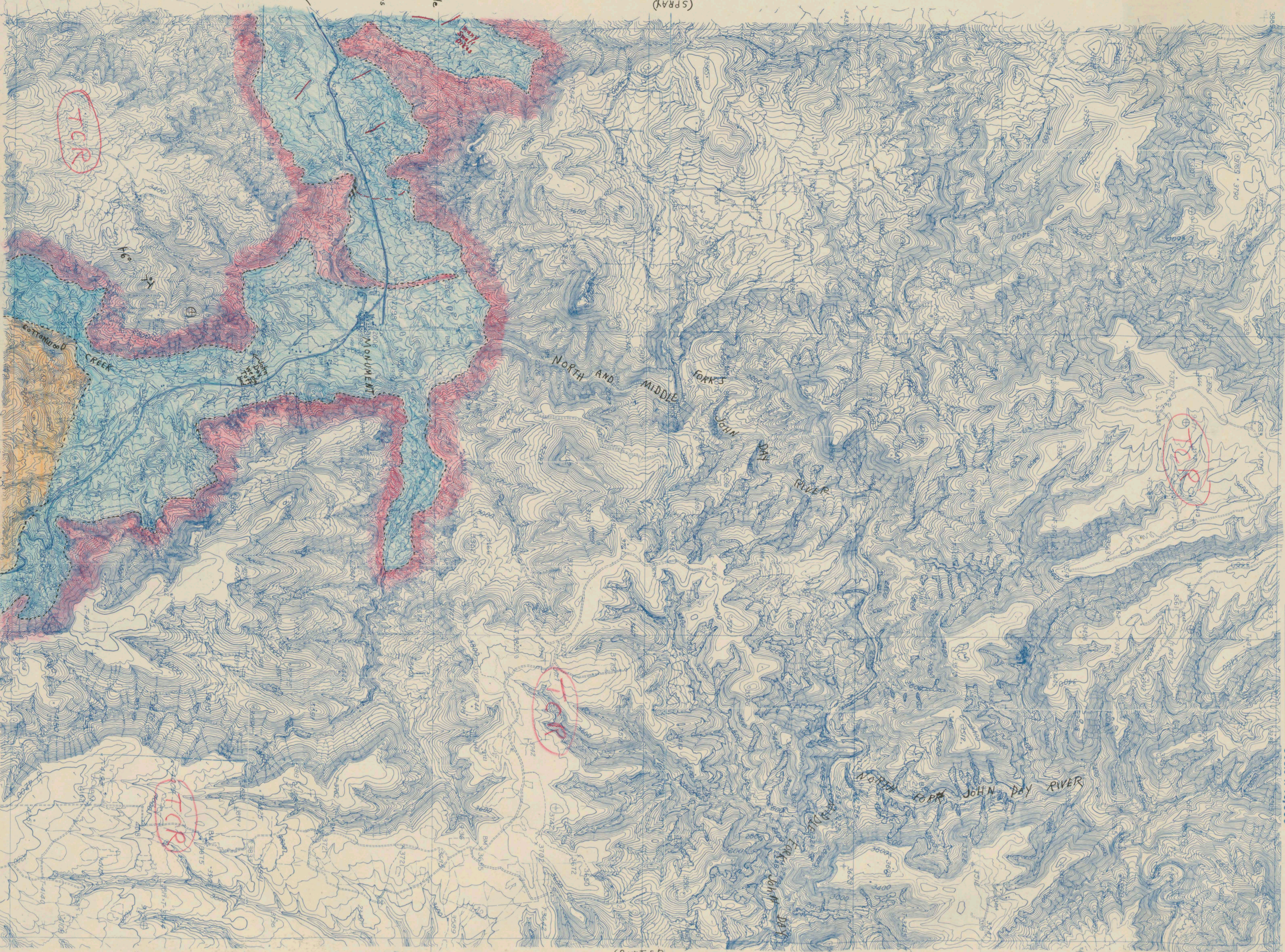


This is a copy of a U.S. Geological Survey manuscript which shows completed field surveys except names, road classification, and similar information subject to editing.

MONUMENT 15, OREGON
N 4445 - W 11915/15
Scale 1: 40,000

45° 00' 00"



The interesting feature of this quadrangle is the great number of Basalt dikes which cut this John Day fm.

5000'
Columbia River Basalt
John Day
Clarno fm.

Geology By
L. F. Hill
& Sept. 52

(SPRAY)

119° 30' 00"

2500'

(Court Rock)

2000'

119° 15' 00"

44° 45' 00"

(SPRAY)

(RITTER)

44° 52' 30"

55' 00"