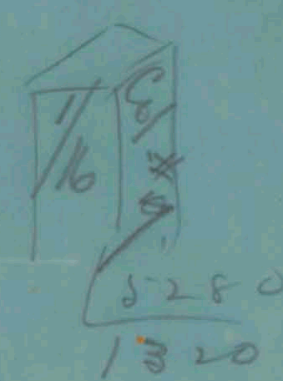


EDICANDA

APPROXIMATE

1398 FT.



1580
120%

COLUMBIA

1500 FT.

FIRST TUNNEL

SECOND TUNNEL

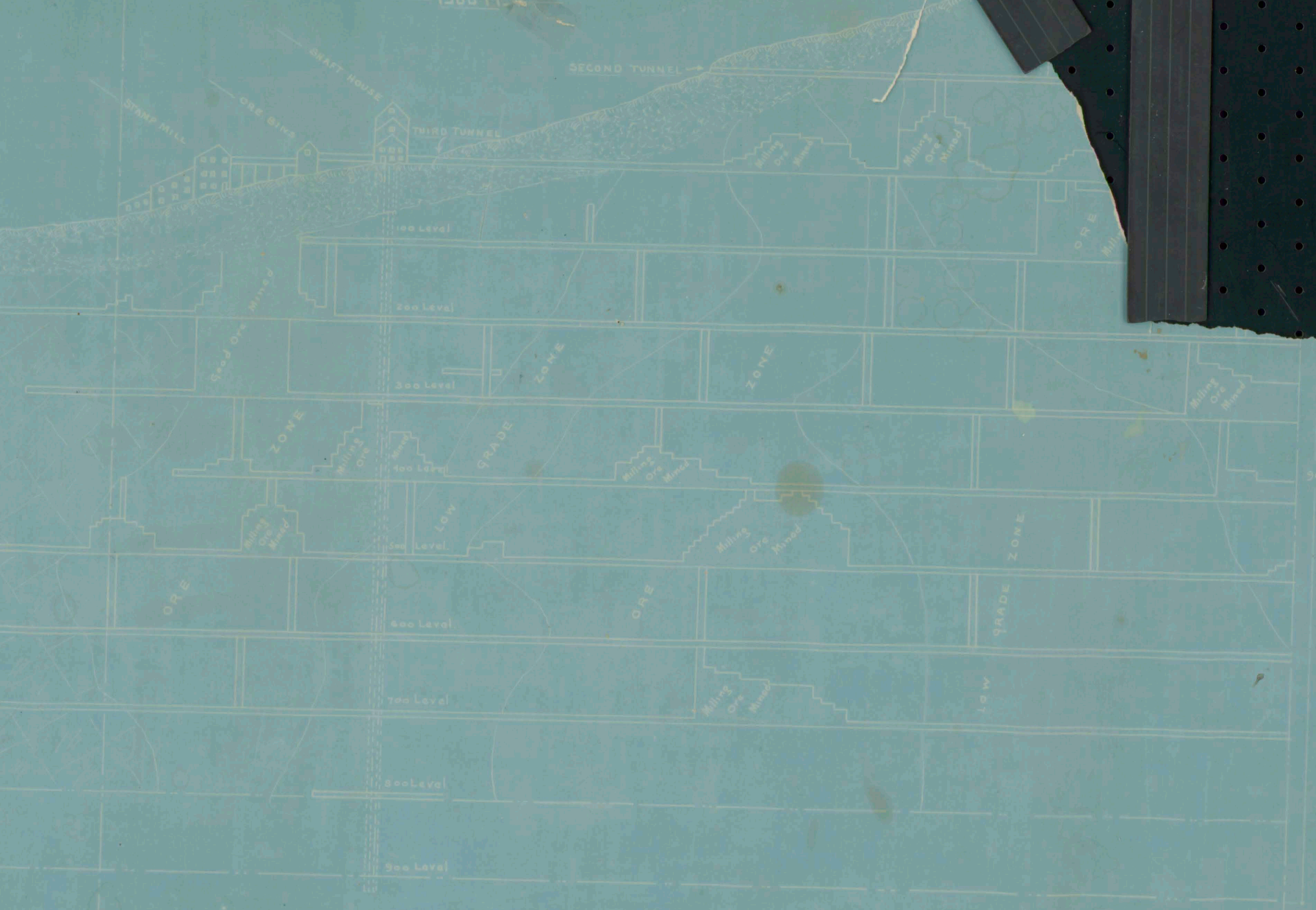
THIRD TUNNEL

FRUIT CREEK

NOTE: THIS LEVEL
WITH STRIKE ONE, SHOWS IT BELONGS
WITH THIS LINE

BROKEN AND
NOT ESTIMATED
FOR ORE

FAULTED GROUND
FOR ORE



SECTIONAL ELEVATION
of
COLUMBIA MINE

FOOT WALL

SCALE 1:100

1908