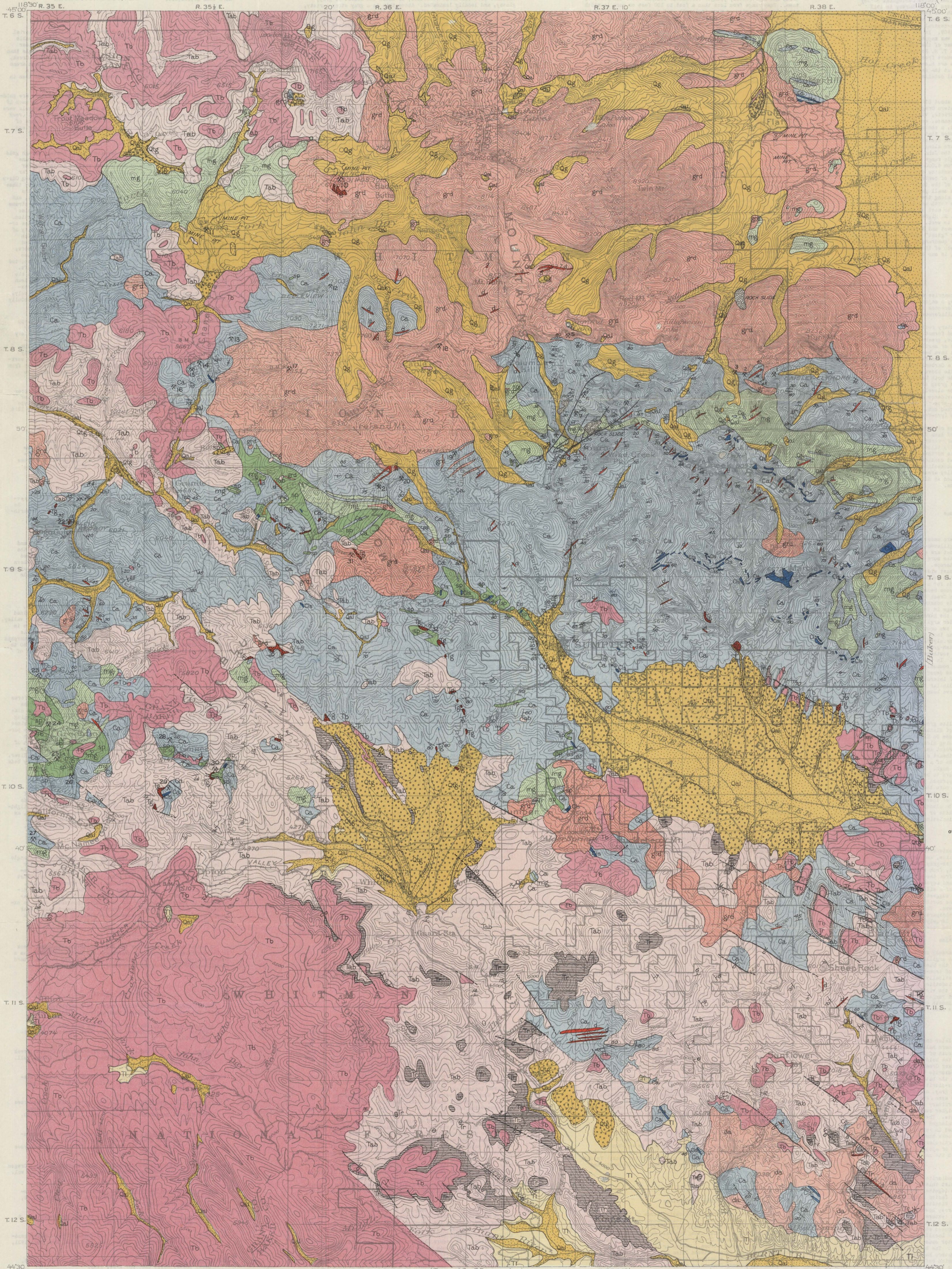


PRELIMINARY GEOLOGIC MAP OF THE SUMPTER QUADRANGLE, OREGON

SURVEYED BY
UNITED STATES
DEPARTMENT OF THE INTERIOR
GEOLOGICAL SURVEY

ISSUED BY
STATE DEPARTMENT OF GEOLOGY
AND MINERAL INDUSTRIES
EARL K. NIXON, DIRECTOR, PORTLAND, OREG.



EXPLANATION

- | | |
|---|--|
| <p>Qal
Alluvium
(Includes glacial outwash
and recent stream deposits)</p> <p>Qg
Glacial drift</p> <p>Qig
Terrace gravel</p> <p>Tb
Younger basic lavas
(basalt-andesite, andesite,
and andesite porphyries)</p> <p>Tl
Lake beds
(Volcanic sand (shab),
alluvial gravel,
diatomaceous earth)</p> <p>Tr
Rhyolite flows and tuffs</p> <p>Tab
Andesite flows and
tuff breccias</p> <p>Og
Older gravel</p> <p>Ca
Limestone
(Largely altered to marble)</p> <p>Ca
Argillite series
(Metamorphosed shale,
sandstone, and lavas)</p> | <p>QUATERNARY</p> <p>QUATERNARY (Tolacasset)</p> <p>TERTIARY</p> <p>PALEOZOIC AND MESOZOIC</p> <p>PRE-TERTIARY</p> |
| <p>da
Dacite</p> <p>grd
Granodiorite
(quartz-diorite)</p> <p>d
Dikes</p> <p>sp
Serpentine and
peridotite</p> <p>mg
Metagabbro</p> <p>—
Fault</p> <p><12
Strike and dip of beds</p> <p>Vertical bed</p> <p>Mine</p> | |

LIST OF MINES

Approximate location shown by position of mine symbol and corresponding number

1. Balsley-Elkhorn
2. Maxwell
3. Highland
4. Buckeye
5. Mountain View
6. North Pole
7. E and E
8. Columbia
9. Golconda
10. French Diggings
11. North Fork
12. La Bellevue
13. Buffalo-Monitor
14. Magnolia
15. Independence
16. Cougar
17. Monumental
18. Imperial, California and Last Chance
19. Mammoth and Belle of Baker
20. Bald Mountain
21. I-bee
22. Red Boy
23. Golden Gate
24. I-X-L
25. Don Juan and Phoenix
26. Golden Eagle
27. Listen Lake and Gold Bullion
28. Bonanza
29. Parkville
30. Winterville
31. Griffith
32. Weaver
33. Powder River Dredge

Base by U. S. Department of the Interior,
Geological Survey, 1899-1900.
Revised in part, 1914.



(Ironsides Mountain)

0 1 2 3 4 5 Miles

0 1 2 3 4 5 Kilometers

Contour interval 100 feet.
Datum is mean sea level.
(Readjustment indicates that elevations on
this map should be increased 8 feet)

1911

Geology by J. T. Pardee,
D. F. Hewett, T. H. Rosenkrantz,
F. J. Katz, F. C. Calkins.

BAK0154

1156