

JOHN ELIOT ALLEN

JOHN ELIOT ALLEN

X sections
Stet
Mural

PRICE 20¢

PLATE 1
BULLETIN No. 12

JOHN ELIOT ALLEN

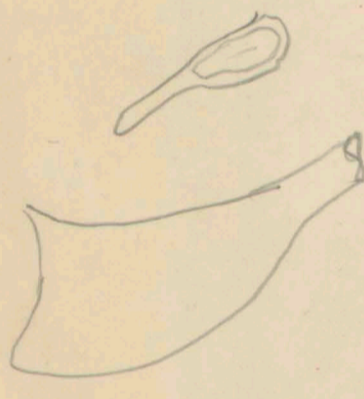
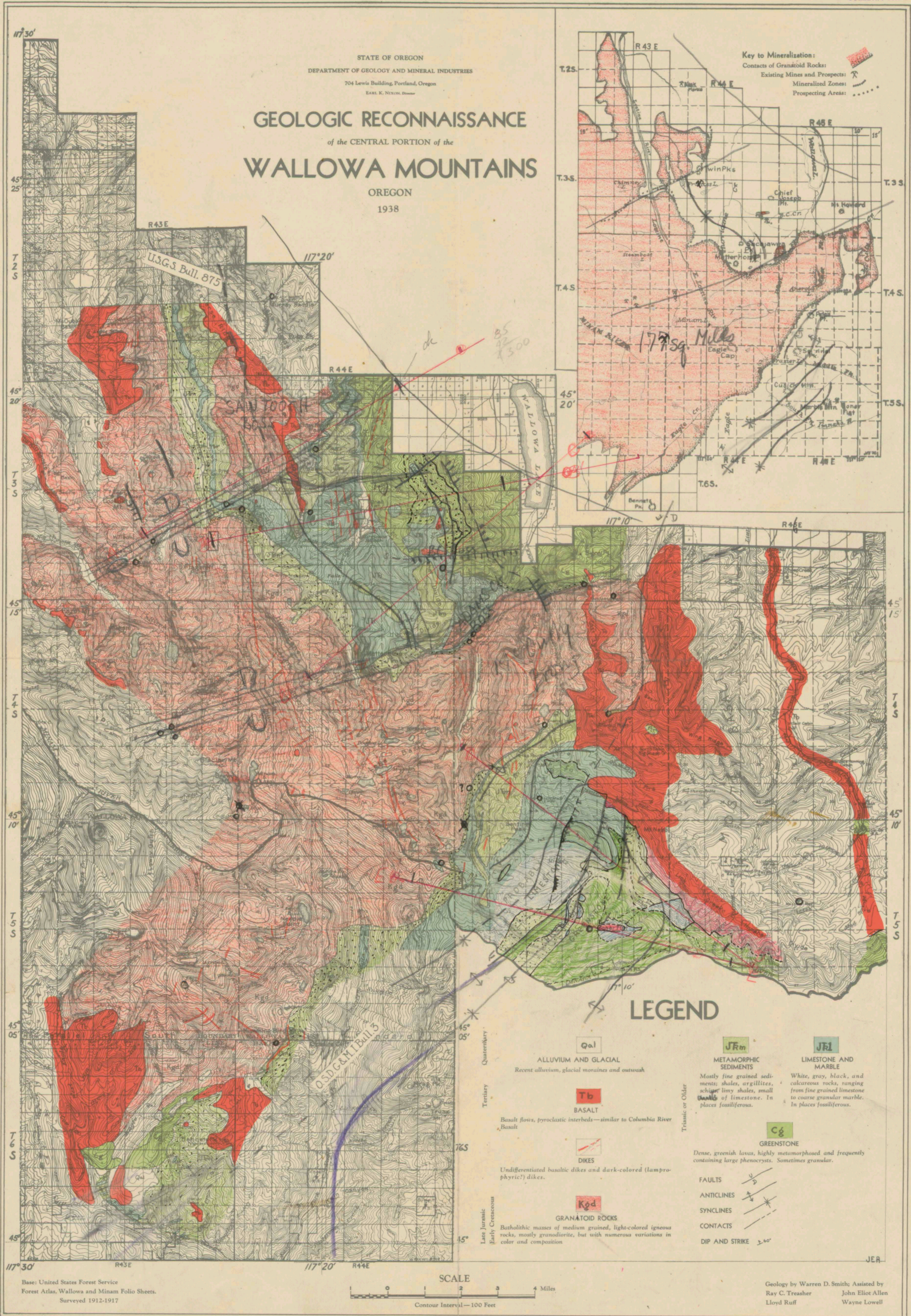
STATE OF OREGON
DEPARTMENT OF GEOLOGY AND MINERAL INDUSTRIES
704 Lewis Building, Portland, Oregon
EARL K. NIXON, Director

GEOLOGIC RECONNAISSANCE

of the CENTRAL PORTION of the

WALLOWA MOUNTAINS

OREGON
1938



Base: United States Forest Service
Forest Atlas, Wallowa and Minam Folio Sheets.
Surveyed 1912-1917

SCALE
0 1 2 3 4 Miles
Contour Interval—100 Feet

Geology by Warren D. Smith Assisted by
Ray C. Treasurer John Eliot Allen
Lloyd Ruff Wayne Lowell

JOHN ELIOT ALLEN

JOHN ELIOT ALLEN