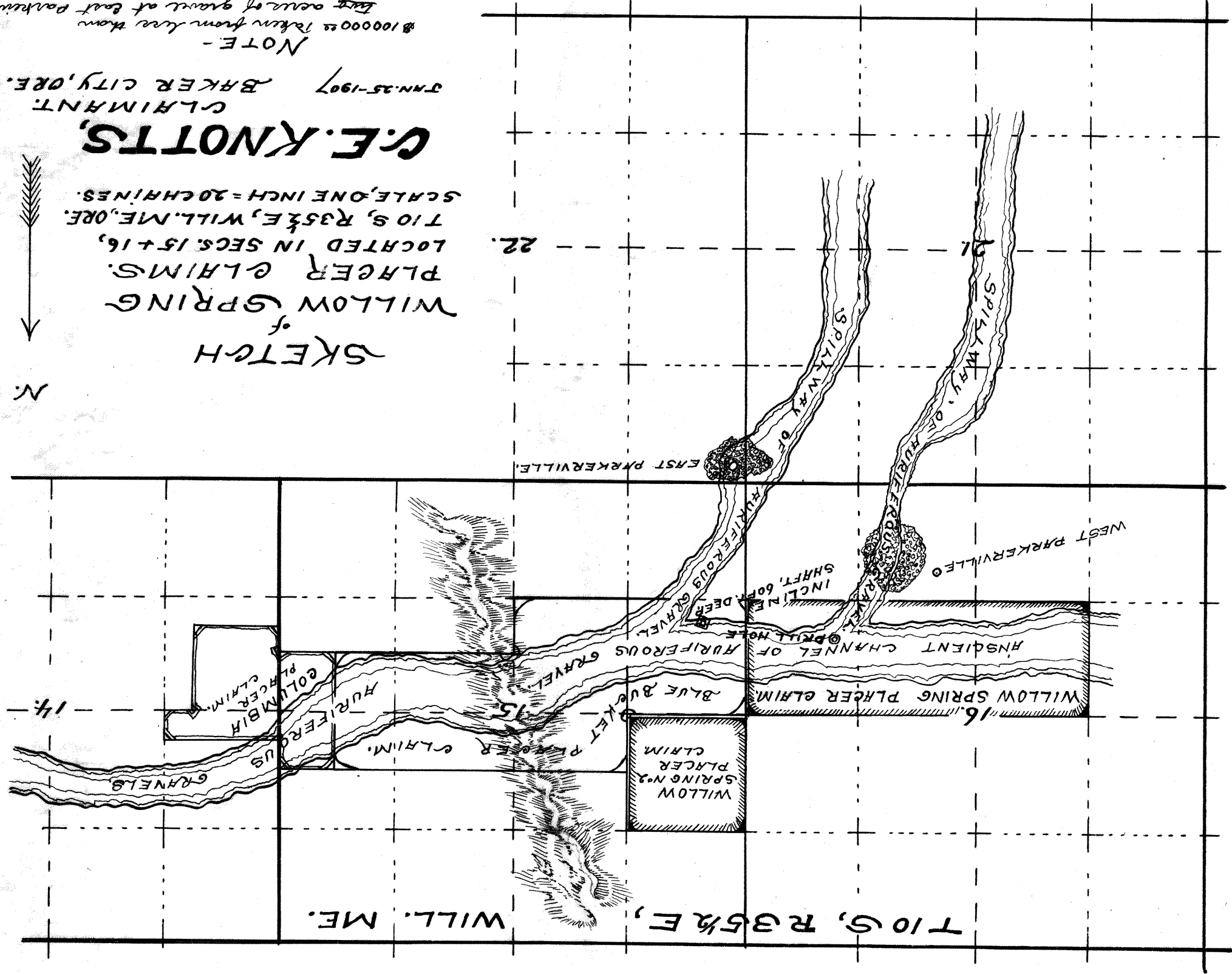


SKETCH
 of
 WILLOW SPRING
 PLACER CLAIMS.
 LOCATED IN SECS. 15+16,
 T10 S, R35 E, WILL. ME.,
 SCALE, ONE INCH = 20 CHAINS.
 C.E. KNOTTS,
 CLAIMANT.
 JAN. 25-1907 BAKER CITY, ORE.

NOTE -
 \$100000 taken from Ave. from
 East side of grant at East Parkerville.
 \$50000 taken from Ave. from
 East side of grant at West Parkerville.



C.E.