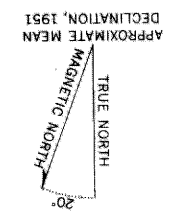


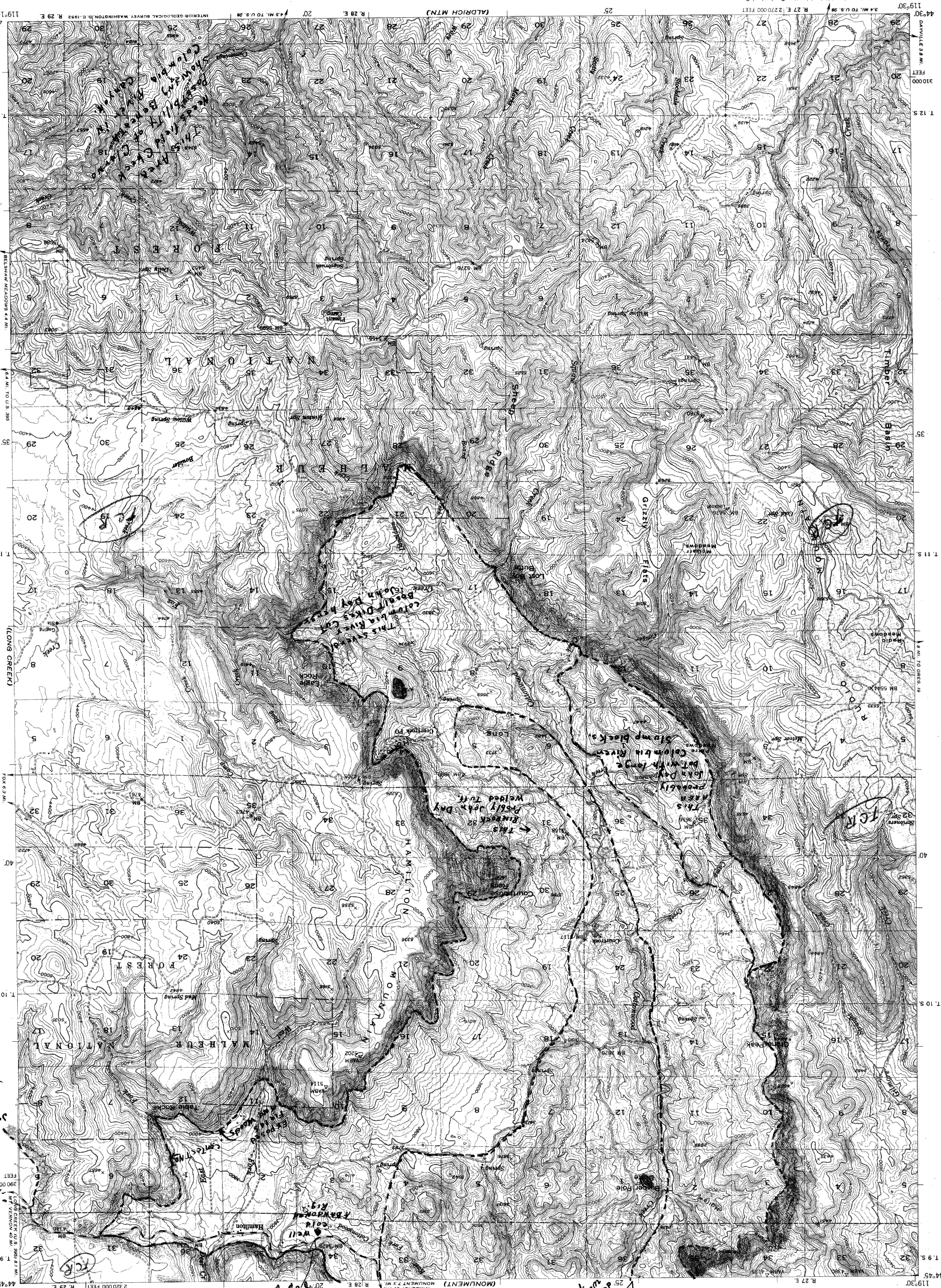
DAYVILLE (142000)

Control by USGS, USCGS, and USFS  
Mapped, edited, and published by the Geological Survey  
Topography from aerial photographs by multiplex methods  
Aerial photographs taken 1946. Field check 1951  
Photom projection, 1927 North American datum, north zone  
10,000 foot grid based on Oregon coordinate system, north zone  
Dashed lines indicate approximate locations  
Unchecked elevations are shown in brown



FOR SALE BY U. S. GEOLOGICAL SURVEY, FEDERAL CENTER, DENVER, COLORADO OR WASHINGTON 25, D. C.  
THIS MAP COMPLETES WITH NATIONAL MAP ACCURACY STANDARDS  
DATUM IS MEAN SEA LEVEL  
CONTOUR INTERVAL 40 FEET  
SCALE 1:62,500

Advance Sheet  
Subject To Correction  
COURT ROCK, OREG.  
N4430-W11915/15  
1951



COURT ROCK QUADRANGLE  
OREGON-GRANT CO.  
15 MINUTE SERIES (TOPOGRAPHIC)  
(METER)

UNITED STATES  
DEPARTMENT OF THE INTERIOR  
GEOLOGICAL SURVEY

Geology by  
L. B. HINZ  
8 SEPT. 52.

- Qal
- Columbia River basalt
- John Day fm.
- Clarno fm.

This small valley  
is a John Day  
Probably underlain by  
John Day - though.

Probably  
formed by  
John Day  
on a  
contract  
with  
John Day  
defined  
with  
contract.