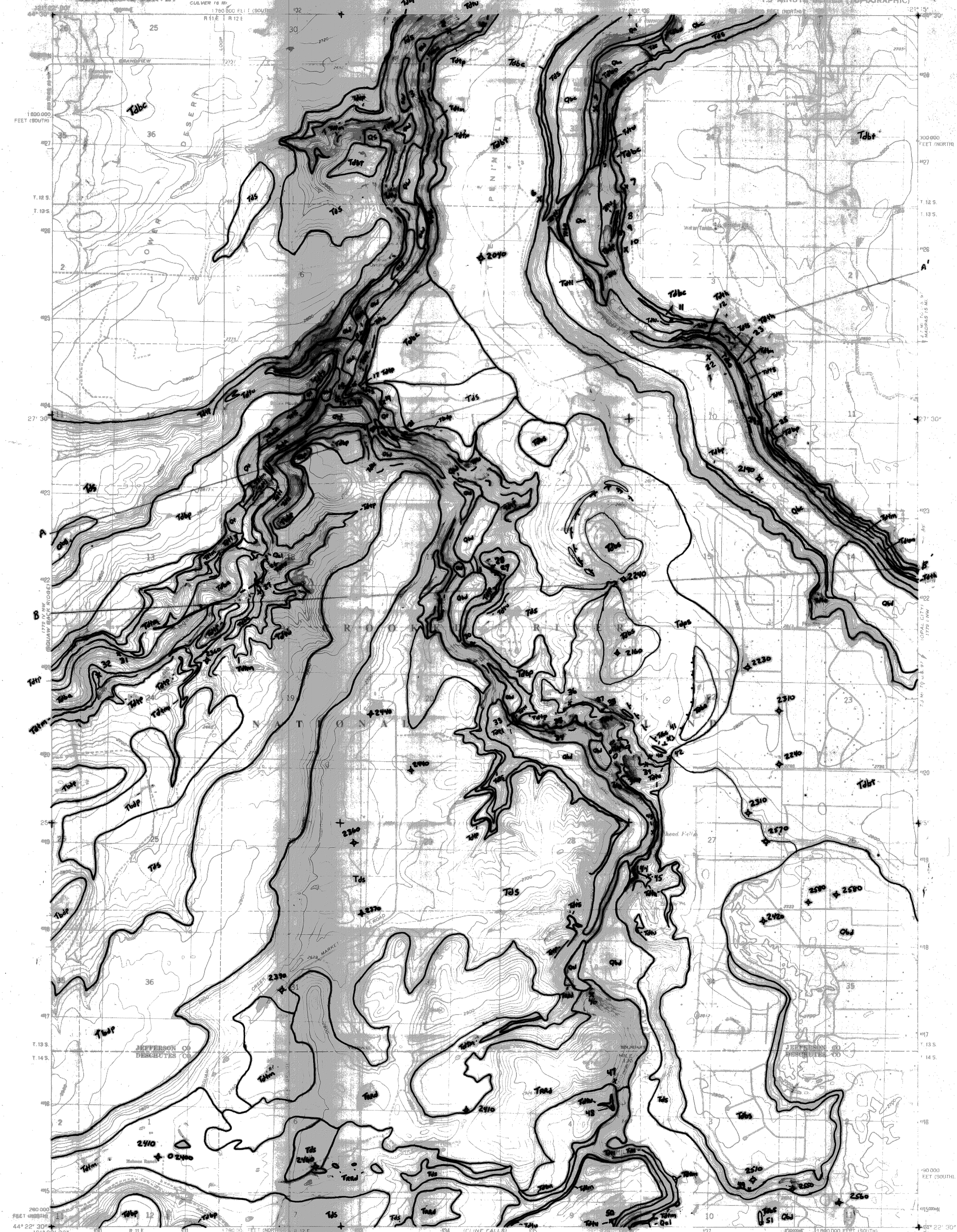


UNITED STATES
DEPARTMENT OF THE INTERIOR
GEOLOGICAL SURVEY

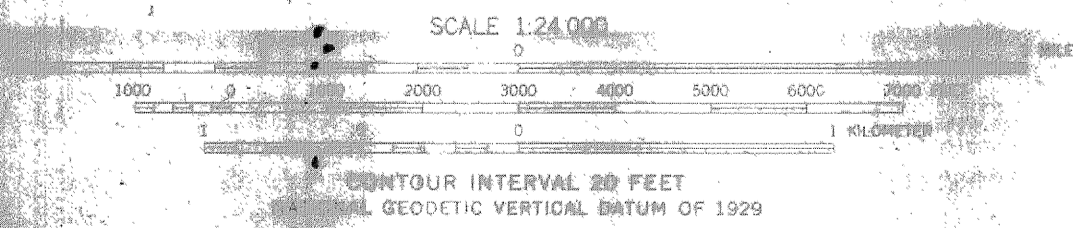
STEELHEAD FALLS QUADRANGLE
7.5 MINUTE SERIES (TOPOGRAPHIC)



Map prepared, edited, and published by the Geological Survey
Revised in cooperation with U.S. Forest Service
Geographic Names and NGS/NOAA

Topographic features by photogrammetric methods from aerial
photographs taken 1957. Field checked 1962.
Revised contour photographs taken 1962. Limited
field checks from 1962.

Projection and 30,000-foot grid ticks: Oregon coordinate
system, north-south line and south zone (Lambert conformal conic)
1983 North American datum. To place on the predicted
North American Datum 1983 move the projection lines 21
meters north and 82 meters east as shown by dashed corner ticks.
There may be private inholdings within the boundaries of
the National or State reservations shown on this map.



ROAD CLASSIFICATION
Light-duty Unimproved dirt

STEELHEAD FALLS, OREG.
44121 D3 TF 324

1965

DMA 1773 IV NE SERIES V87

Geology by F
1994