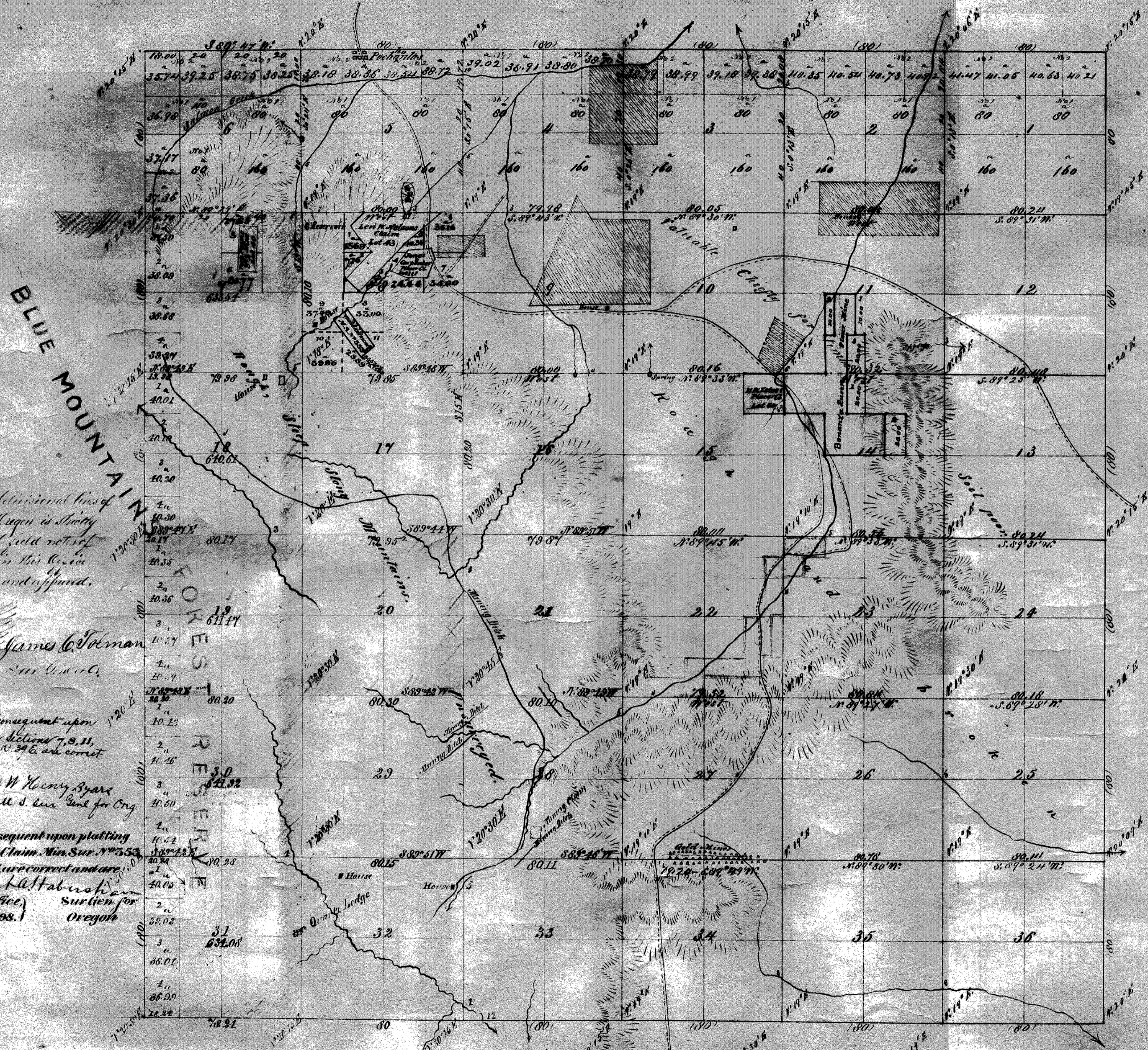


Township No. 9 South Range No. 39 East Will. Mer.



General Description
 The tract of land in Township No. 9 South, Range No. 39 East, is situated in the Mining district of Idaho City and the timber consists chiefly of spruce, fir, hemlock, pine, and juniper, very much mixed with some other trees. The soil is rich below and rocky soil 3rd and 4th rate.

Total Acres 8951.62

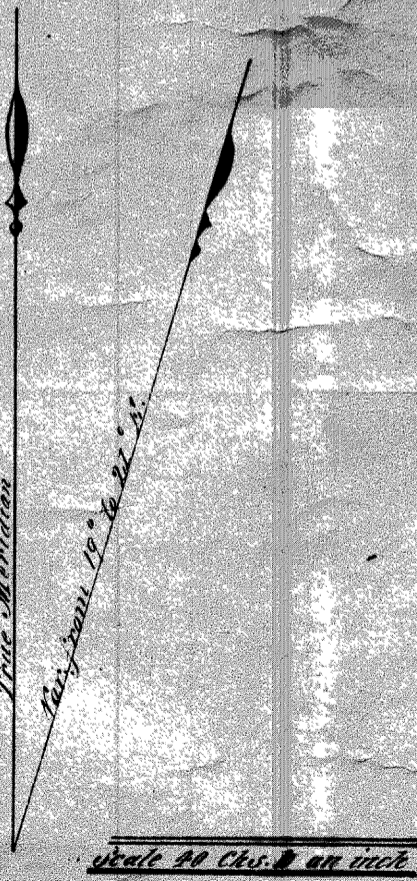
The map of the Subdivisional lines of T. 9 S., R. 39 E., W. Mer. Oregon is strictly conformable to the original field notes of the survey filed on file in this office which have been examined and approved.
 U.S. Surveyor General's Office
 Portland Oregon
 November 5th 1879 James C. Tolman
 Sur. Gen. of Ore.

The areas and lotings consequent upon platting Mineral Claims in sections 7, 8, 11, 18, and 15 Township No. 9 S., R. 39 E., are correct and are hereby approved.
 U.S. Surveyor General's Office
 Portland Oregon
 October 25th 1879 W. Henry Byars
 U.S. Sur. Gen. for Ore.

The areas and lotings consequent upon platting the Young American Quartz Claim, Min. Sur. No. 553 in SW 1/4 Sec. 8, T. 9 S., R. 39 E., are correct and are hereby approved. Robert H. Habersham
 U.S. Surveyor General's Office, Sur. Gen. for Oregon
 Portland Oregon, Nov. 5 1878.

Sections Designated	By Whom Surveyed	Contract No.	Date	Acres Surveyed	Miles	Chains	Links	When Surveyed
Subdivisions	Thompson & Chapin	104	Apr. 26 th 1864	20	00	17		May 31st 1864
Total Acres	14054.97							
	Whitcher & McCombs	520	April 1, 1879	20	01	36		Completed June 14, 1879
	June 21, 1878							Completed June 18, 1878

The above map of the Survey of Subdivisional lines in T. 9 S., R. 39 East, Will. Mer. (are) is strictly conformable to the survey and field notes thereof on file in this office, which have been examined and approved.
 Surveyor General's Office
 Oregon City, Aug 24 1880
 W. J. Pingree
 Sur. Gen. of Ore.



Scale 40 Chs. to an inch