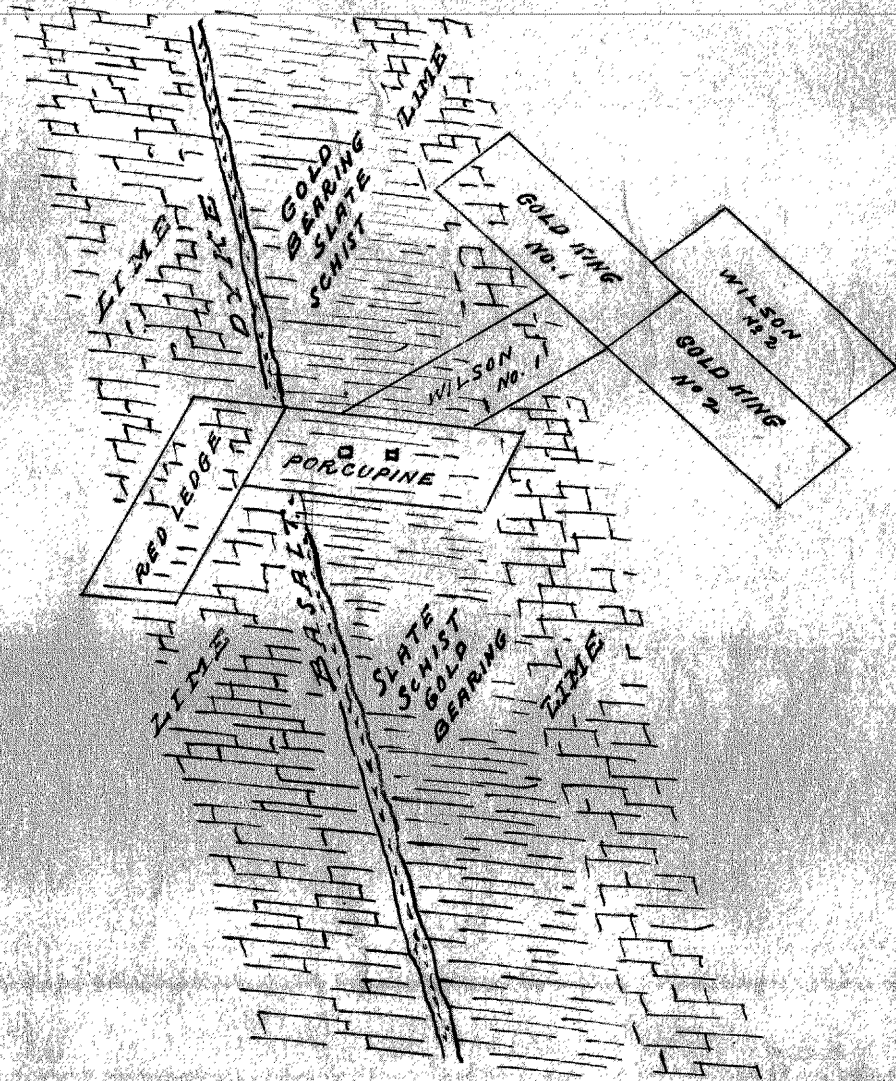
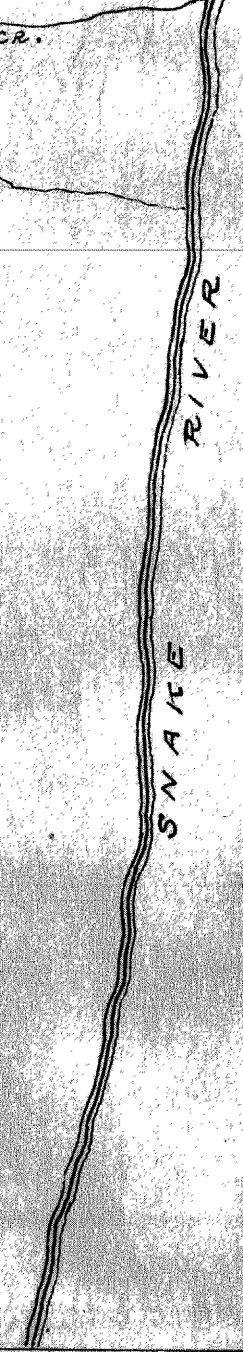


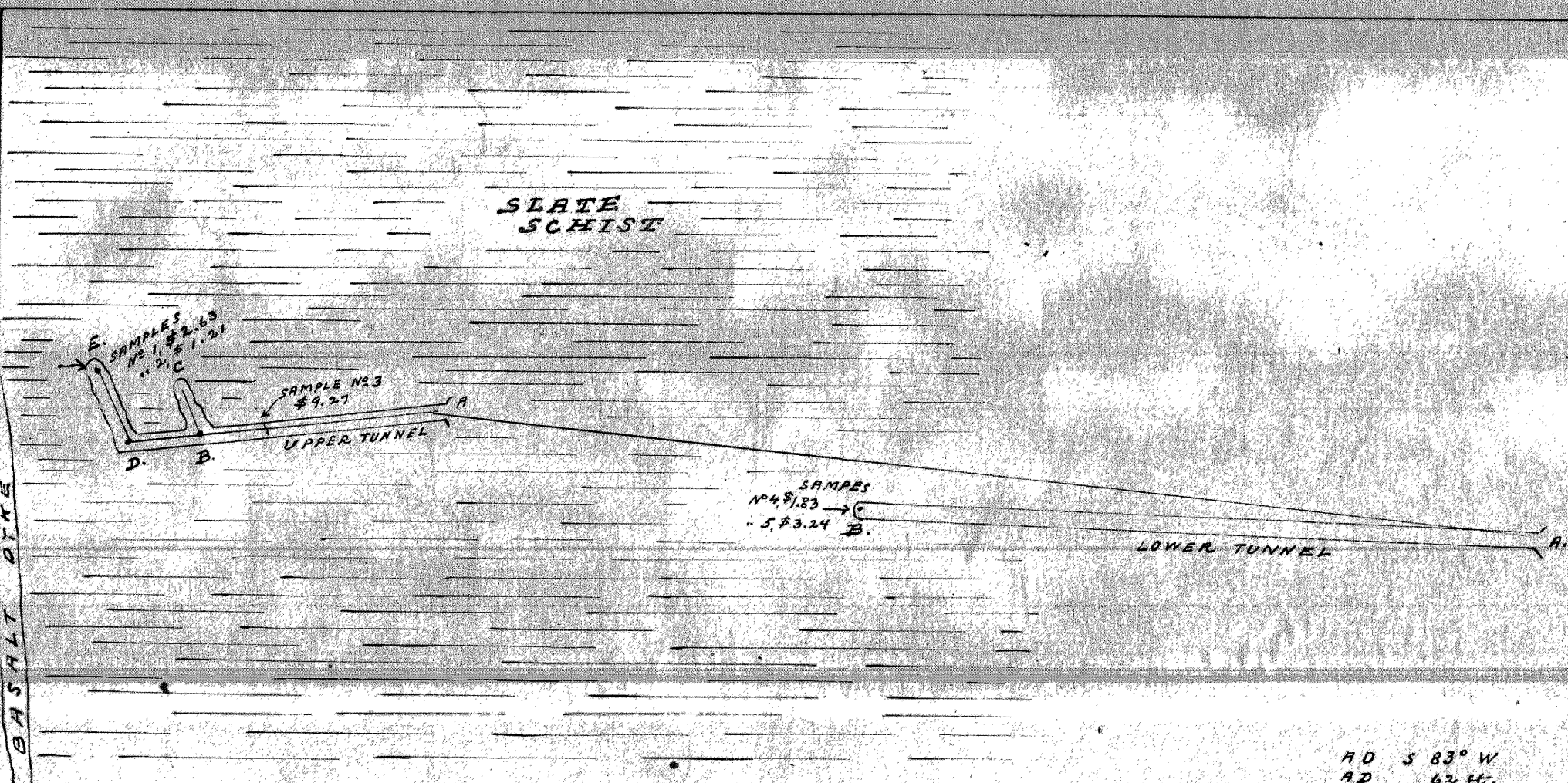
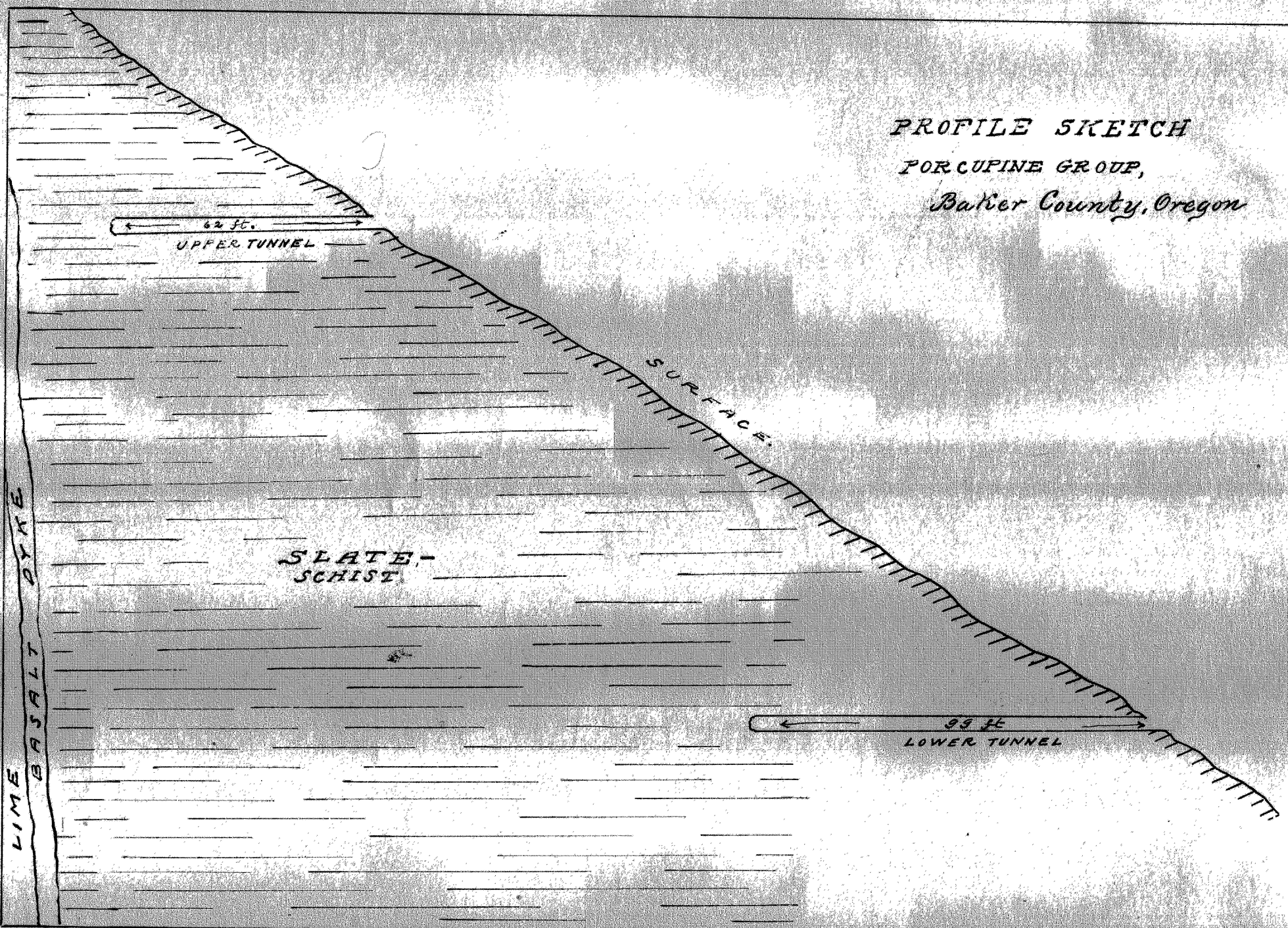
SURFACE PLAN  
 PORCUPINE GROUP  
 Baker County, Oregon  
 Scale 1200ft = 1inch



SODA CR.



PROFILE SKETCH  
 PORCUPINE GROUP,  
 Baker County, Oregon



SURVEY OF  
 UNDERGROUND WORKINGS  
 PORCUPINE GROUP  
 Baker County, Oregon.

A D	S 83° W
A D	62 ft.
B D	19 "
D E	N 23° W
D E	19 ft
B C	12 "
A' A	89° W.
A B	99 ft
A' A	226 ft.