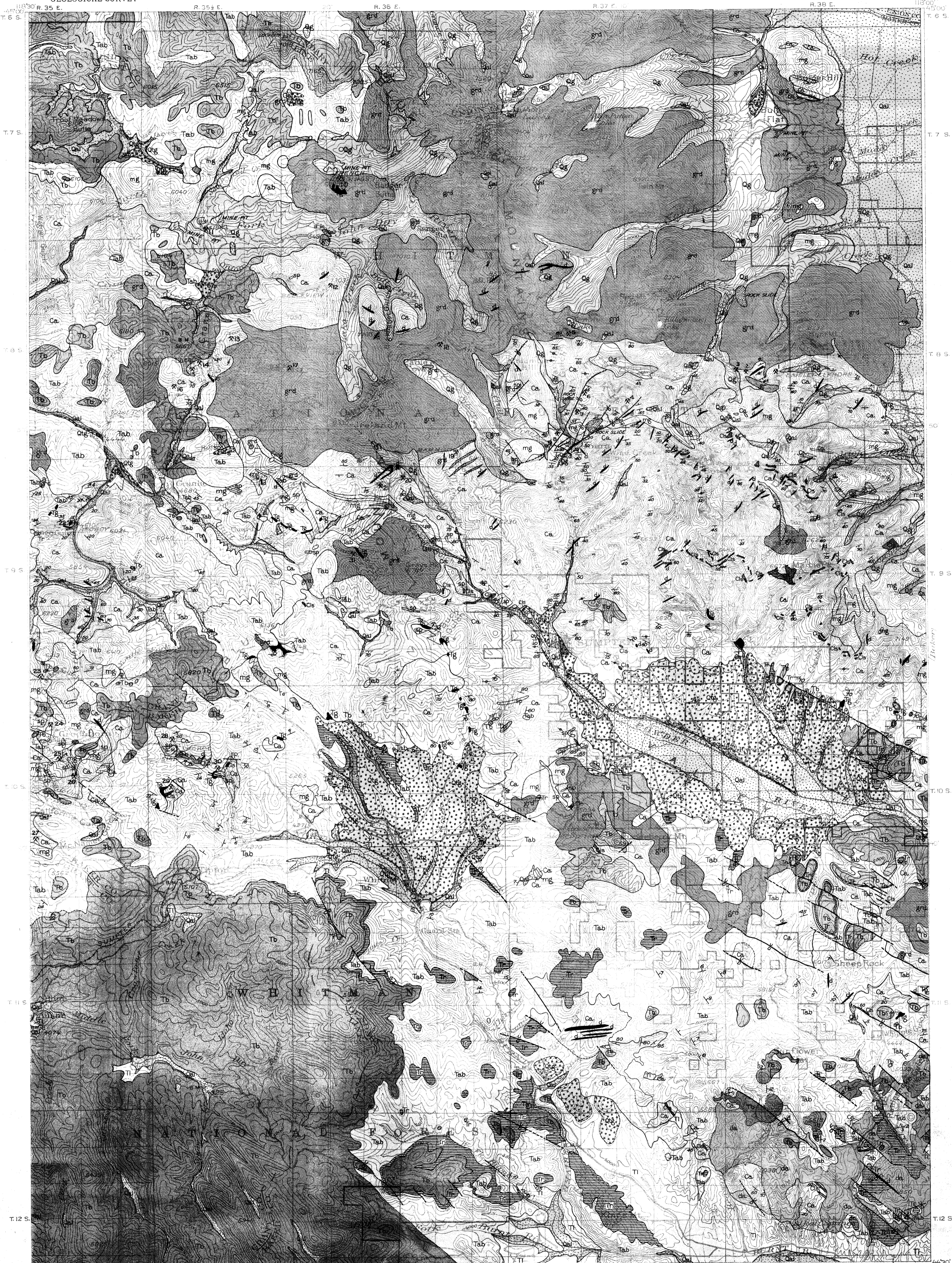


PRELIMINARY GEOLOGIC MAP  
OF THE  
SUMPTER QUADRANGLE,  
OREGON

SURVEYED BY  
UNITED STATES  
DEPARTMENT OF THE INTERIOR  
GEOLOGICAL SURVEY

ISSUED BY  
STATE DEPARTMENT OF GEOLOGY  
AND MINERAL INDUSTRIES  
EARL K. NIXON, DIRECTOR, PORTLAND, OREG.



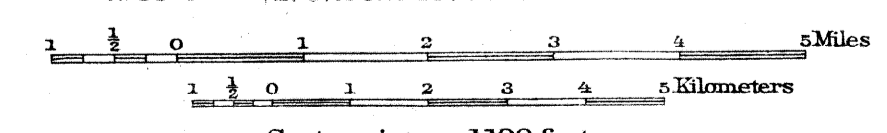
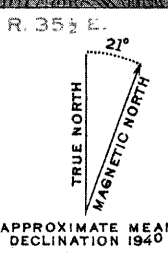
EXPLANATION

- |  |     |                        |
|--|-----|------------------------|
|  | Qal | QUATERNARY             |
|  | Qg  |                        |
|  | Tg  |                        |
|  | Tb  | TERTIARY               |
|  | Tl  |                        |
|  | Tr  |                        |
|  | Tab | PALEOZOIC AND MESOZOIC |
|  | Og  |                        |
|  | Cl  |                        |
|  | Ca  | PRE-TERTIARY           |
|  | da  |                        |
|  | grd |                        |
|  | d   | PRE-TERTIARY           |
|  | sp  |                        |
|  | mg  |                        |
|  | --- |                        |
|  | —   |                        |
|  | —   |                        |
|  | ⋄   |                        |

LIST OF MINES

- Approximate location shown by position of mine symbol and corresponding number
1. Baisley-Elkhorn
  2. Maxwell
  3. Highland
  4. Buckeye
  5. Mountain View
  6. North Pole
  7. E and E
  8. Columbia
  9. Golconda
  10. French Diggings
  11. North Fork
  12. La Bellevue
  13. Buffalo Monitor
  14. Magnolia
  15. Independence
  16. Cougar
  17. Monumental
  18. Imperial, California and Last Chance
  19. Mammoth and Belle of Baker
  20. Bald Mountain
  21. Ilex
  22. Red Boy
  23. Golden Gate
  24. IXL
  25. Don Juan and Phoenix
  26. Golden Eagle
  27. Listen Lake and Gold Bullion
  28. Bonanza
  29. Parkerville
  30. Winterville
  31. Griffith
  32. Weaver
  33. Powder River Dredge

Base by U. S. Department of the Interior,  
Geological Survey, 1899-1900.  
Revised in part, 1914.



Contour interval 100 feet.  
Datum is mean sea level.  
(Readjustment indicates that elevations on  
this map should be increased 3 feet)

1941

Geology by J. T. Pardee,  
D. F. Hewett, T. H. Rosenkrantz,  
F. J. Katz, F. C. Calkins.

Scan  
11/22