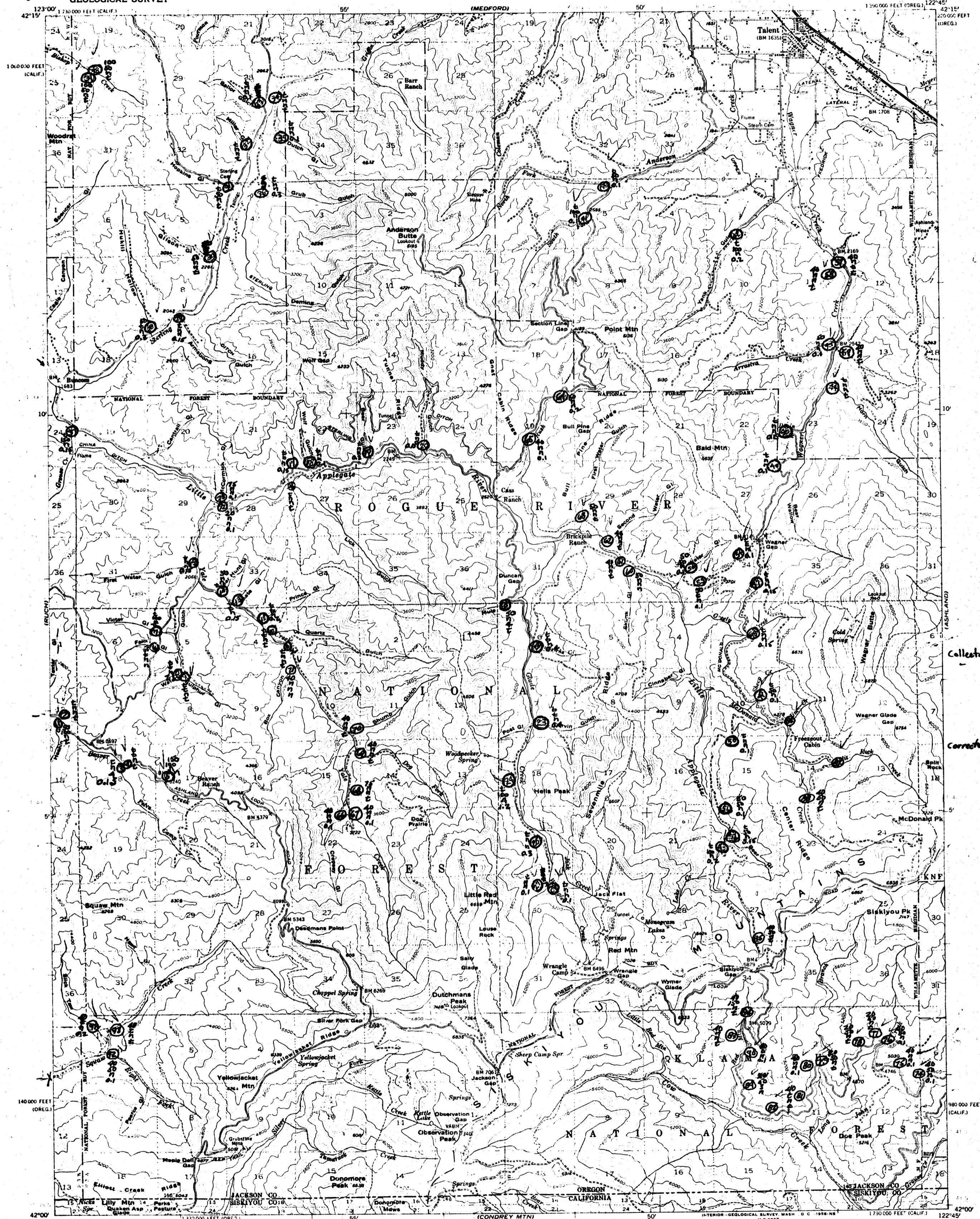


UNITED STATES
DEPARTMENT OF THE INTERIOR
GEOLOGICAL SURVEY

TALENT QUADRANGLE
OREGON-CALIFORNIA
15 MINUTE SERIES (TOPOGRAPHIC)

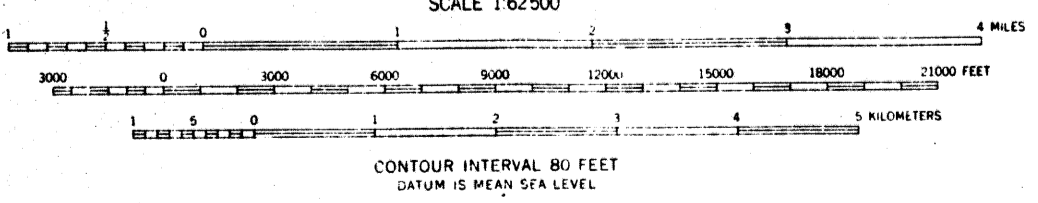


*Cu
Zn
Mn
Hg*

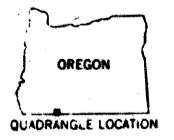
*Collected 1954 1-56
1965 57-93*

corrected 5/14/65 Z.G.B.

Maped, edited, and published by the Geological Survey
Control by USGS and USCGS
Topography from aerial photographs by multiplex methods
Aerial photographs taken 1951. Field check 1954
Polyconic projection. 1927 North American datum
10,000-foot grid based on Oregon coordinate system, south zone
and California coordinate system, zone 1
Dashed land lines indicate approximate locations



ROAD CLASSIFICATION
Heavy-duty ——— Light-duty - - - - -
Medium-duty ——— State Route
U.S. Route



TALENT, OREG.-CALIF.
N4200 W12245/15
1954

THIS MAP COMPLIES WITH NATIONAL MAP ACCURACY STANDARDS
FOR SALE BY U. S. GEOLOGICAL SURVEY, FEDERAL CENTER, DENVER, COLORADO OR WASHINGTON 25, D. C.
A FOLDER DESCRIBING TOPOGRAPHIC MAPS AND SYMBOLS IS AVAILABLE ON REQUEST