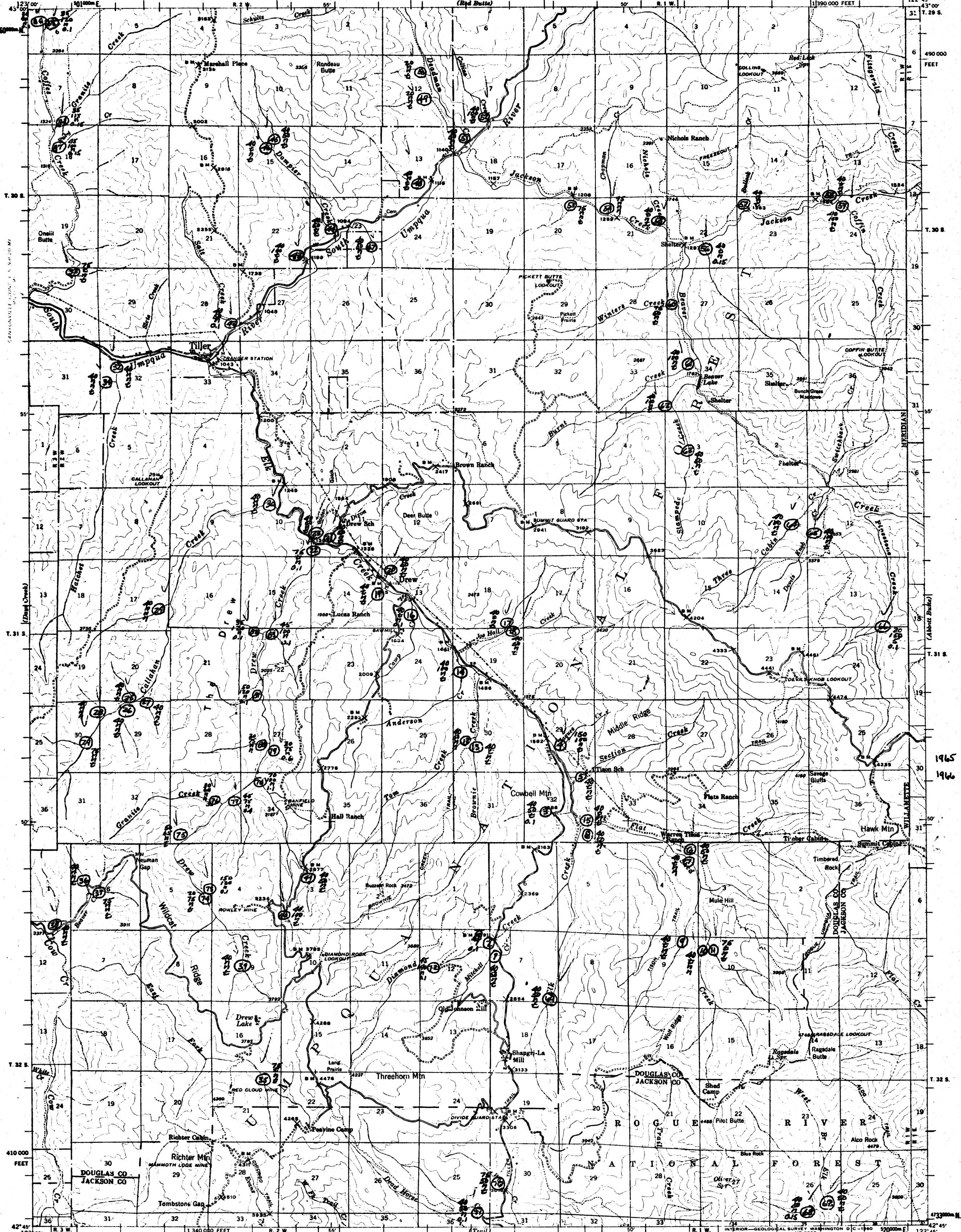


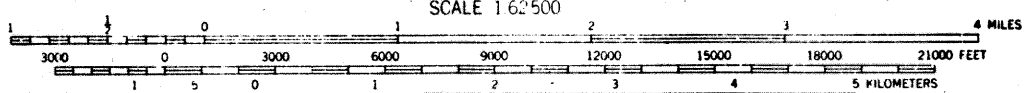
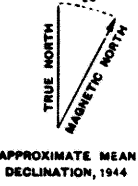
UNITED STATES
DEPARTMENT OF THE INTERIOR
GEOLOGICAL SURVEY

OREGON
TILLER QUADRANGLE
15-MINUTE SERIES



1965 1-11
1966 72-87

Mapped by the Geological Survey
1944



CONTOUR INTERVAL 50 FEET
DATUM IS MEAN SEA LEVEL

ROAD CLASSIFICATION
Medium duty ———
Light duty - - - - -
Unimproved dirt
State Route

TILLER, OREG.
N 4245-W 12245/15
1944

FOR SALE BY U. S. GEOLOGICAL SURVEY, DENVER 25, COLORADO OR WASHINGTON 25, D. C.
A FOLDER DESCRIBING TOPOGRAPHIC MAPS AND SYMBOLS IS AVAILABLE ON REQUEST