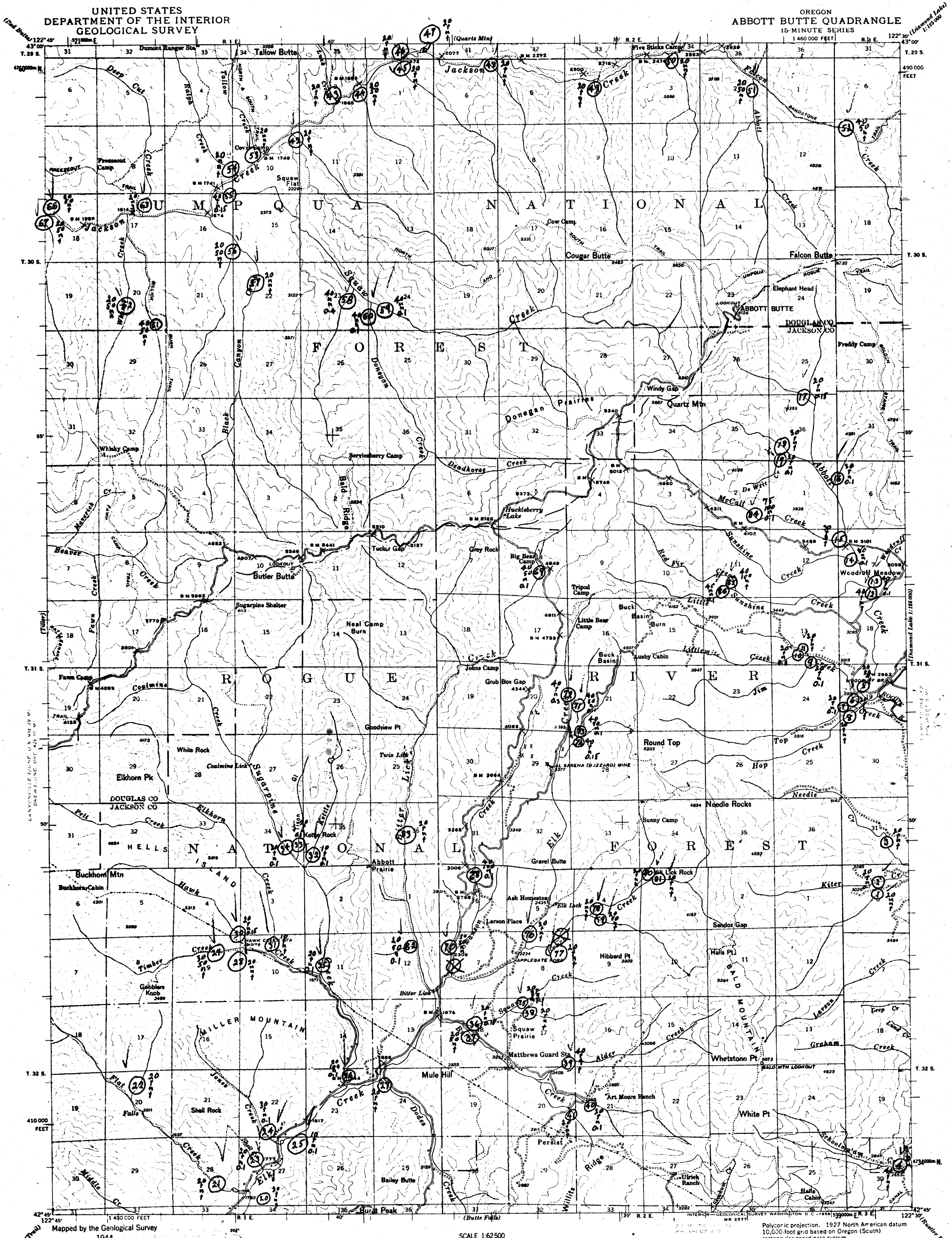


UNITED STATES
DEPARTMENT OF THE INTERIOR
GEOLOGICAL SURVEY

OREGON
ABBOTT BUTTE QUADRANGLE
15-MINUTE SERIES
1:460,000 FEET



Mapped by the Geological Survey
1944

ROAD CLASSIFICATION
Light-duty — Unimproved dirt

APPROXIMATE MEAN
DECLINATION, 1944

SCALE 1:62,500
3000 0 3000 6000 9000 12000 15000 18000 21000 FEET
1 5 0 1 2 3 4 5 KILOMETERS

CONTOUR INTERVAL 50 FEET
DATUM IS MEAN SEA LEVEL

Polyconic projection, 1927 North American datum
10,000-foot grid based on Oregon (South)
rectangular coordinate system
1000-meter Universal Transverse Mercator grid ticks,
zone 10, shown in blue

ABBOTT BUTTE, OREG.

N 4245-W 12230/15
1944

FOR SALE BY U. S. GEOLOGICAL SURVEY, DENVER 2, COLORADO OR WASHINGTON 25, D. C.
A FOLDER DESCRIBING TOPOGRAPHIC MAPS AND SYMBOLS IS AVAILABLE ON REQUEST