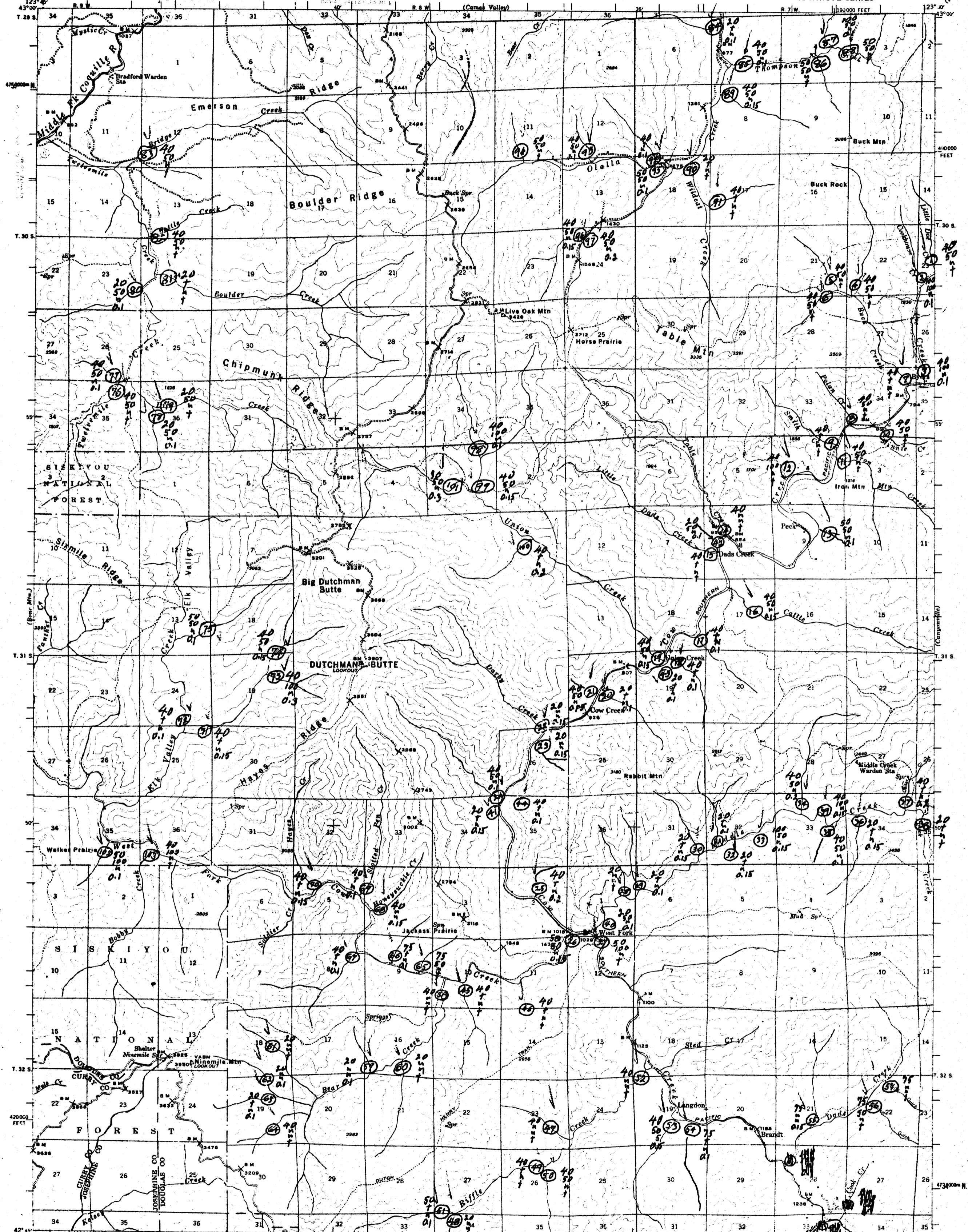


UNITED STATES
DEPARTMENT OF THE INTERIOR
GEOLOGICAL SURVEY

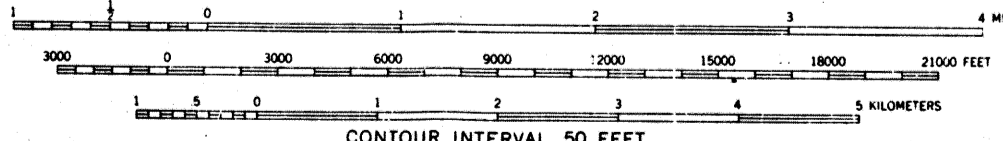
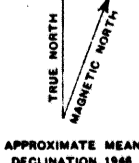
OREGON
DUTCHMAN BUTTE QUADRANGLE
15-MINUTE SERIES



Mapped by the Geological Survey
1946

SCALE 1:62500

ROAD CLASSIFICATION
Medium-duty ——— Light-duty ———
Unimproved dirt ———
State Route



CONTOUR INTERVAL 50 FEET
DATUM IS MEAN SEA LEVEL

THIS MAP AVAILABLE WITH OR WITHOUT SHADED RELIEF OVERPRINT
FOR SALE BY U.S. GEOLOGICAL SURVEY, DENVER 2, COLORADO OR WASHINGTON 25, D. C.
A FOLDER DESCRIBING TOPOGRAPHIC MAPS AND SYMBOLS IS AVAILABLE ON REQUEST

Polyconic projection; 1927 North American datum
10,000-foot grid based on Oregon (South)
rectangular coordinate system
1000-meter Universal Transverse Mercator grid ticks,
zone 10, shown in blue
Certain land lines are omitted because of
insufficient data. All recovered corners are shown

DUTCHMAN BUTTE, OREG.
N 4245—W 12330/115

1946