

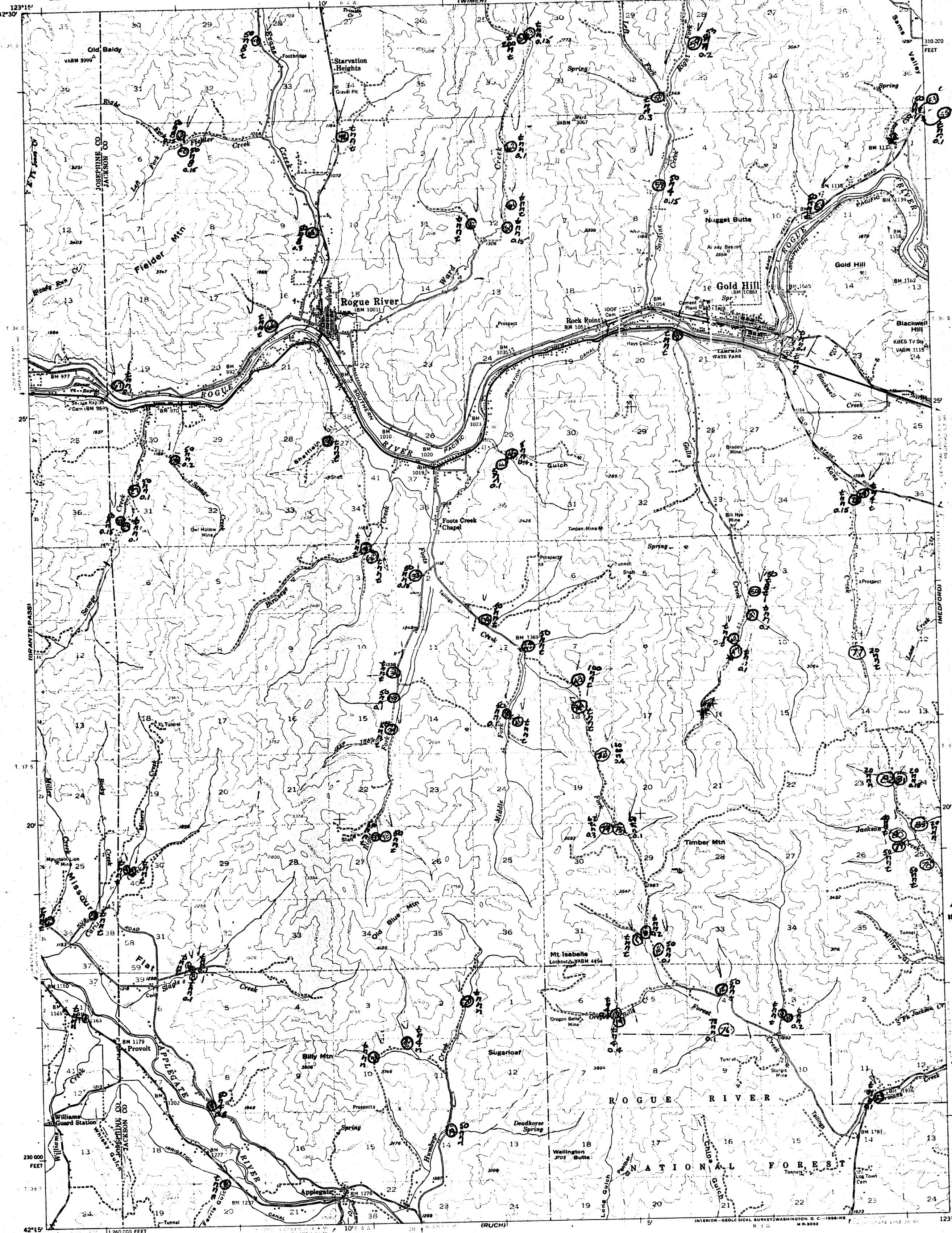
GEORGE

UNITED STATES  
DEPARTMENT OF THE INTERIOR  
GEOLOGICAL SURVEY

GOLD HILL QUADRANGLE  
OREGON  
15 MINUTE SERIES (TOPOGRAPHIC)

1:20,000 FEET

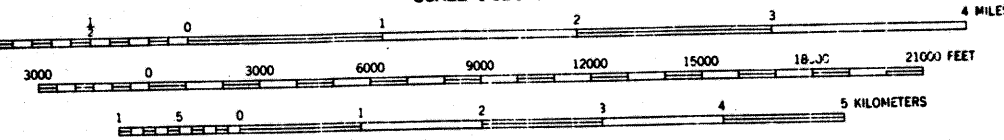
TRAIL



1963 1-72  
1964 73-76  
1965 77-83

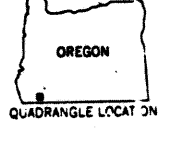
Corrected 5/10/60 RAG  
1964 data plotted 4/14/60 RAG  
1965 data plotted 5/24/60 RAG

Mapped, edited, and published by the Geological Survey  
Control by USGS, USC&GS, and State of Oregon  
Topography from aerial photographs by multiplex methods  
Aerial photographs taken 1951-52. Field check 1954  
Polyconic projection. 1927 North American datum  
10,000-foot grid based on Oregon coordinate system, south zone  
Dashed land lines indicate approximate locations  
Unchecked elevations are shown in brown



CONTOUR INTERVAL 80 FEET  
DASHED LINES REPRESENT 40 FOOT CONTOURS  
DATUM IS MEAN SEA LEVEL

ROAD CLASSIFICATION  
Heavy-duty ——— Light-duty ———  
Medium-duty ——— Unimproved dirt ———  
U.S. Route ——— State Route ———



GOLD HILL, OREG.  
N 4215 - W 12300/15  
1954

THIS MAP COMPLIES WITH NATIONAL MAP ACCURACY STANDARDS  
FOR SALE BY U. S. GEOLOGICAL SURVEY, FEDERAL CENTER, DENVER, COLORADO OR WASHINGTON 25, D. C.  
A FOLDER DESCRIBING TOPOGRAPHIC MAPS AND SYMBOLS IS AVAILABLE ON REQUEST