

THIS MAP WAS PREPARED FOR ASSESSMENT PURPOSE ONLY.

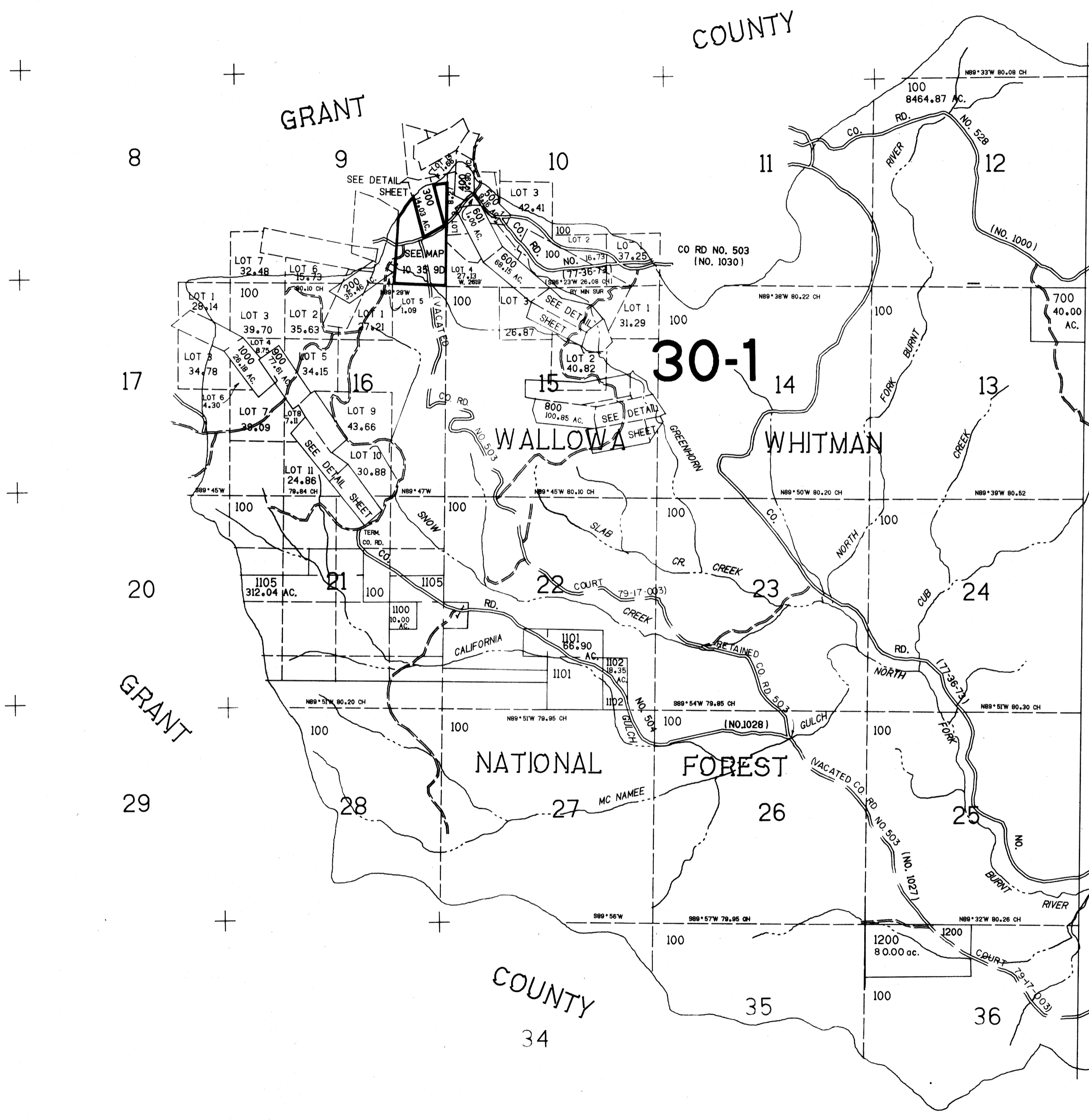
T.10S. R.35E. W.M. BAKER COUNTY

10 35 & INDEX

1"=2000'

1

CONTROL LAYOUT TRACED CHECKED



CANCELLED NO'S 1103 1104

SEE MAP 10 35 1/2

NOTE: ROAD NUMBERS IN PARENTHESES ARE THE OLD CO RD NUMBERS PRIOR TO CO COURT ORDER OF 11/3/77 (77-44-157)

10 35 & INDEX

REVISED 7/5/79