

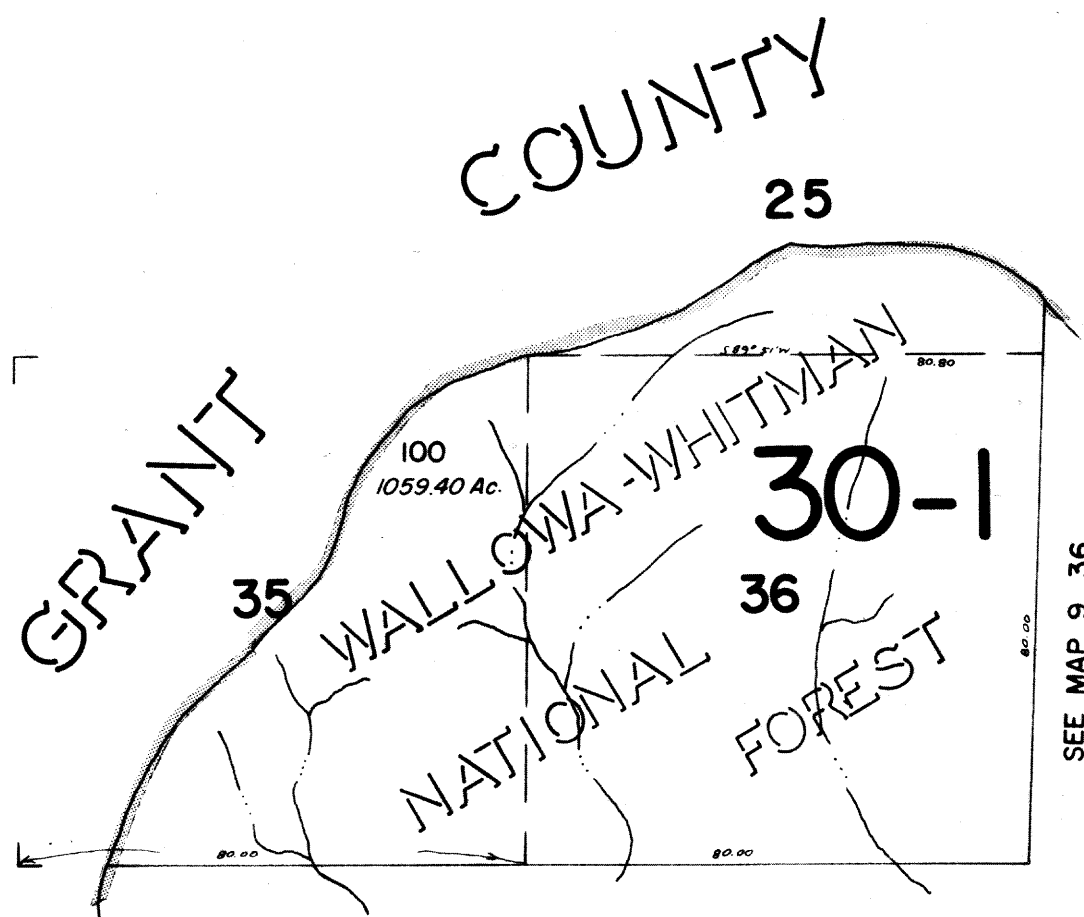
THIS MAP WAS PREPARED FOR
ASSESSMENT PURPOSE ONLY.

T. 9 S. R. 35 1/2 E.W.M.

9 351/2

BAKER COUNTY

1" = 2000'



SEE MAP 10 351/2

SEE MAP 9 36

REVISED:

9 351/2

103

JFC 5/1/82