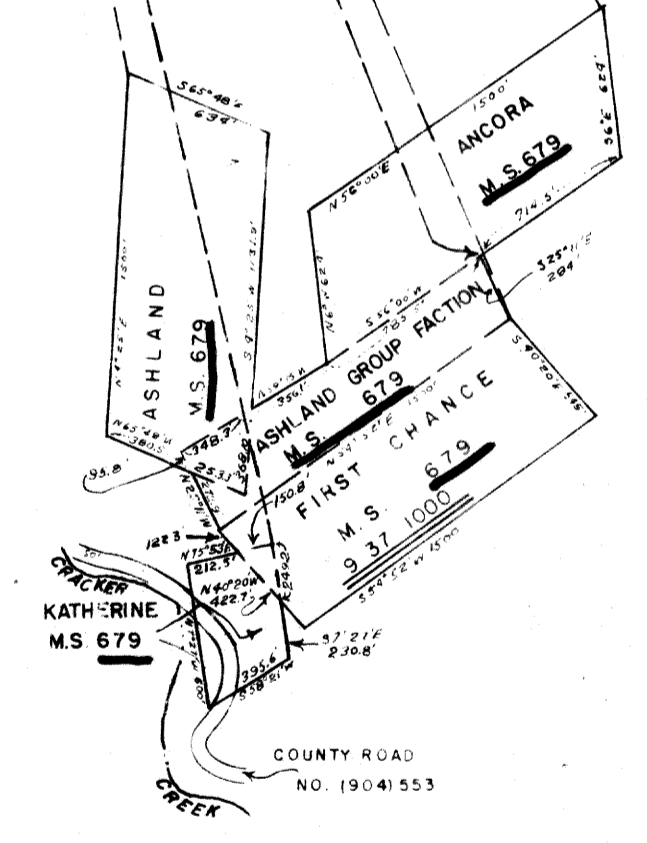
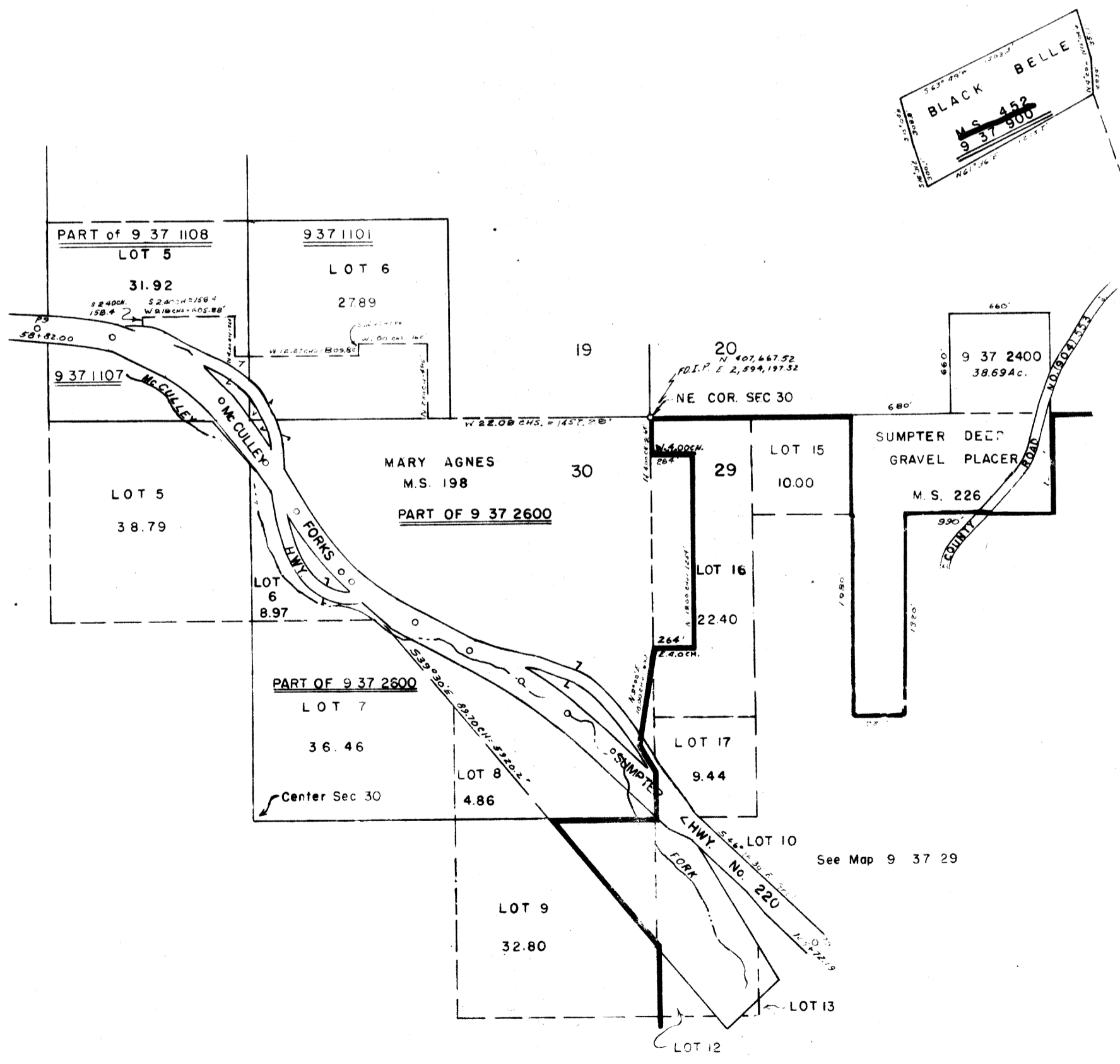
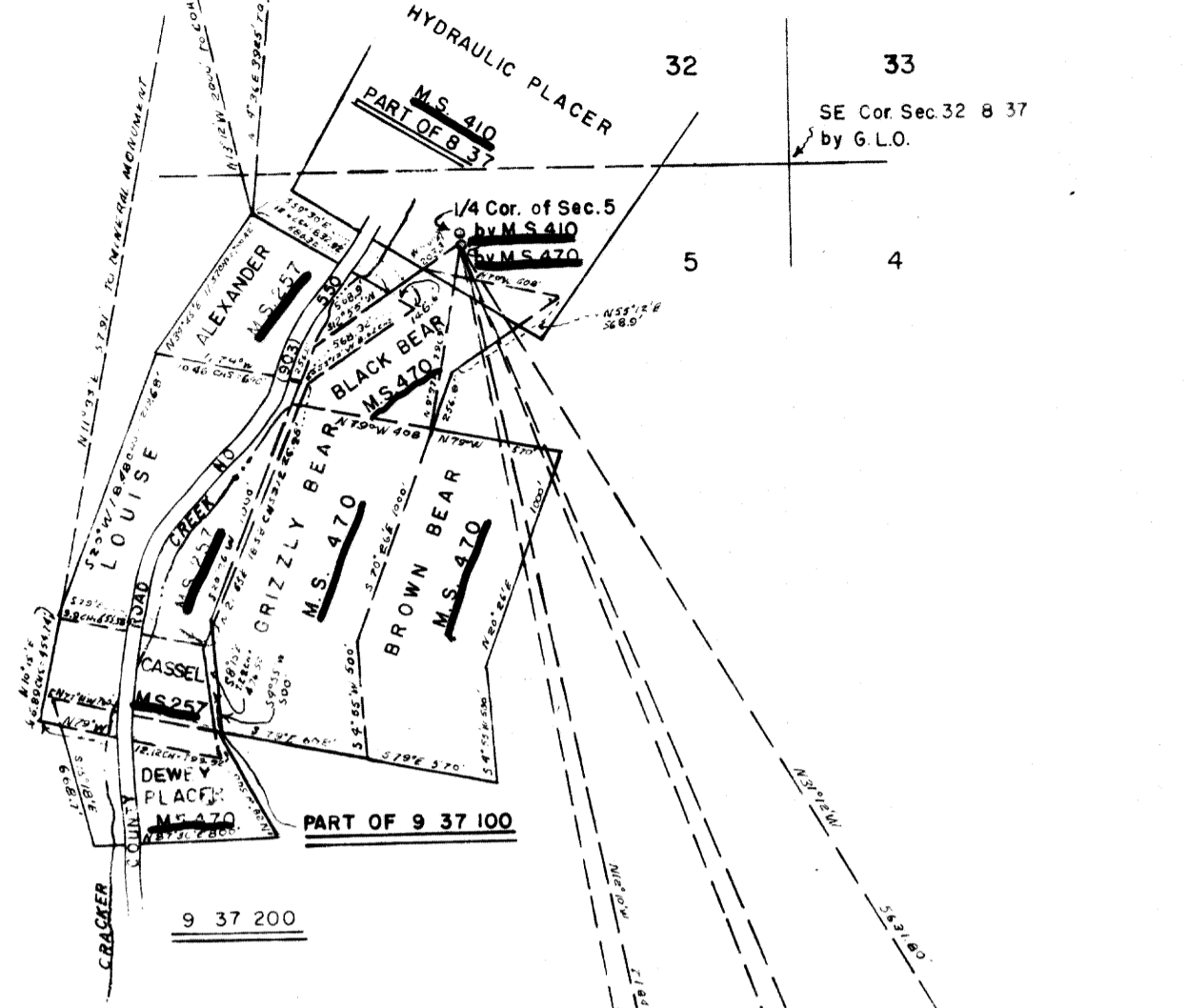
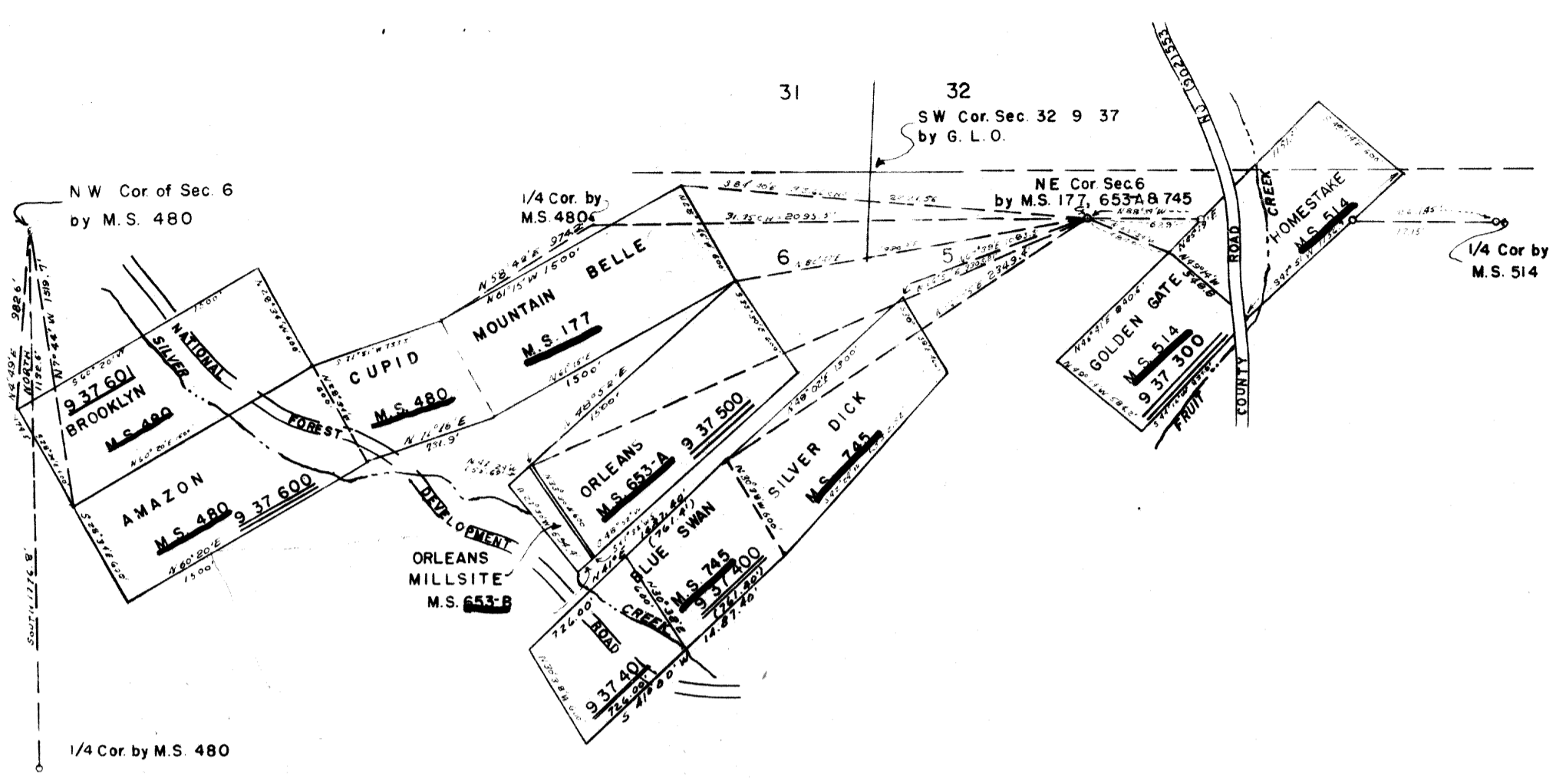


MINING CLAIMS T9 S R37EW.M.
 BAKER COUNTY
 1" = 800

9 37
 DETAIL SHEET
 REFER TO MAP NO 9 37
 FOR TAX LOTTING & LOCATION

THIS MAP WAS PREPARED FOR
 ASSESSMENT PURPOSE ONLY.



NOTE: ROAD IN
 PARAGRAPHS 15
 THE OLD CO. NO. 1
 DRIVE TO CHAN
 COUNTY COURSE
 11/3/71 (71-44-15)

Cor to Sec's
 16, 17, 20 & 21

9 37
 DETAIL SHEET
 107
 REVISED:
 7/23/80