

MINING CLAIMS T8S R37E W.M.
BAKER COUNTY

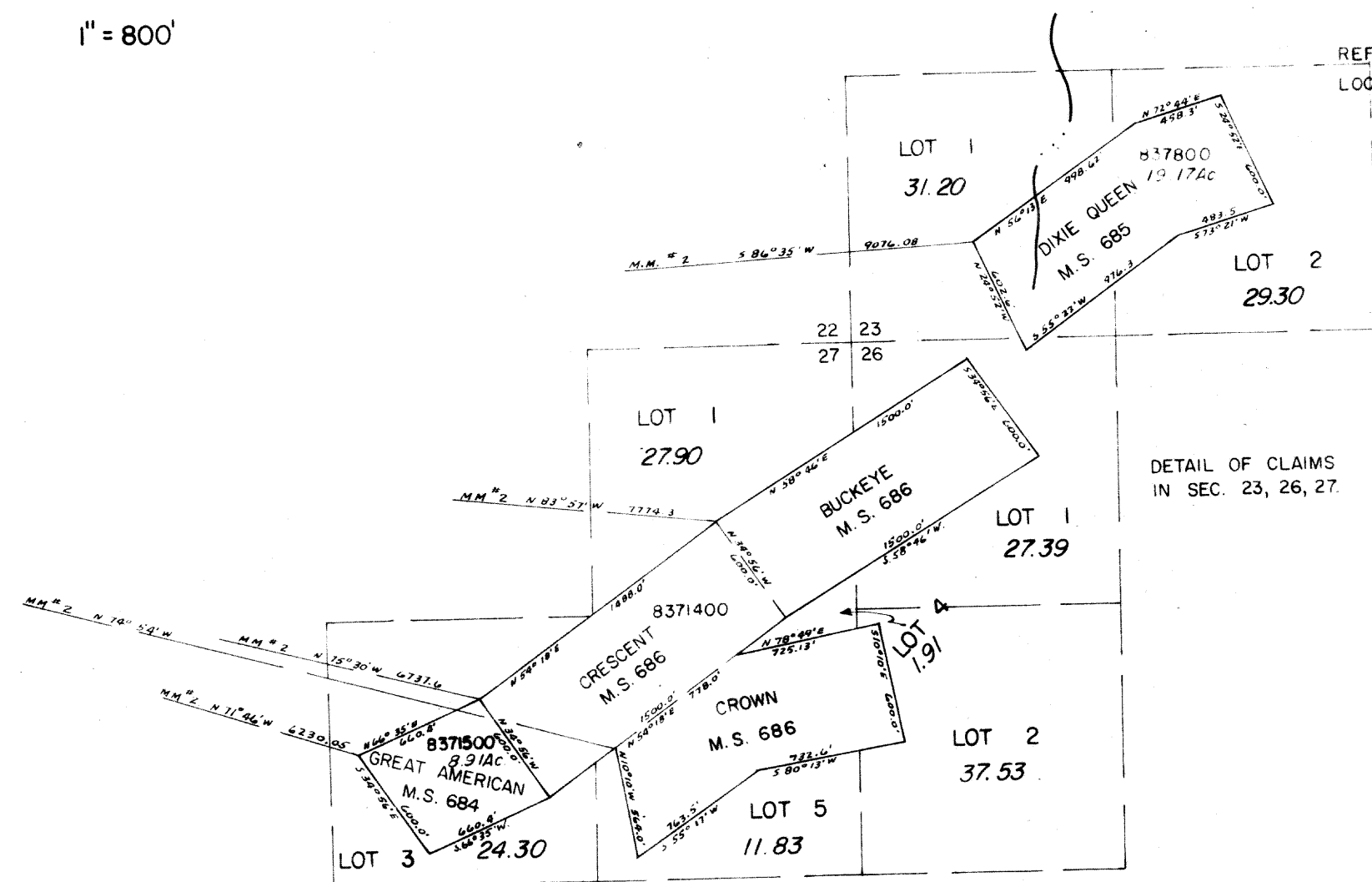
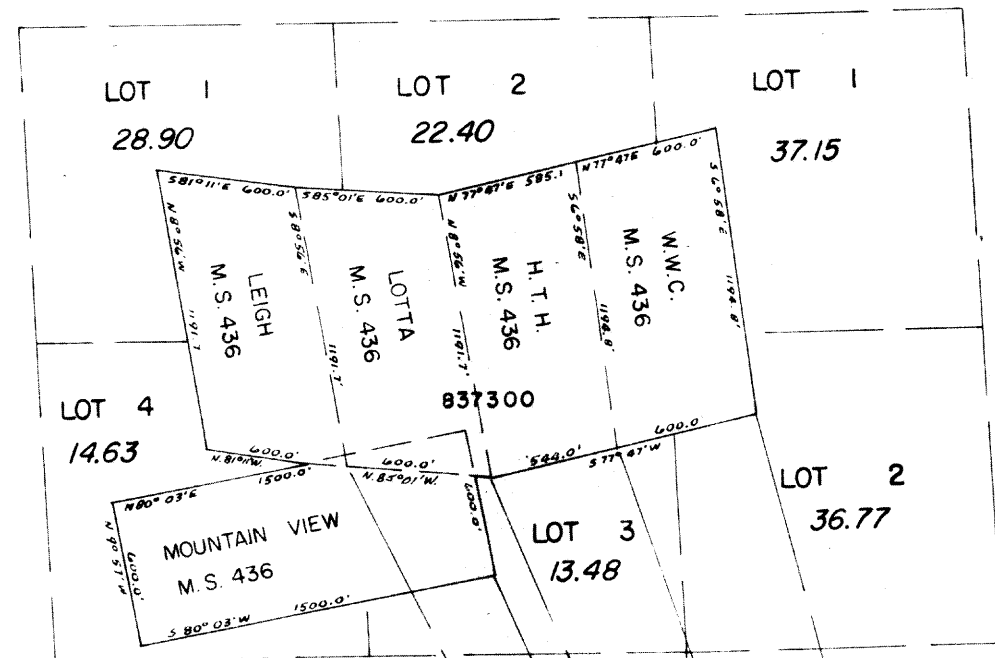
1" = 800'

8 37
DETAIL SHEET 2

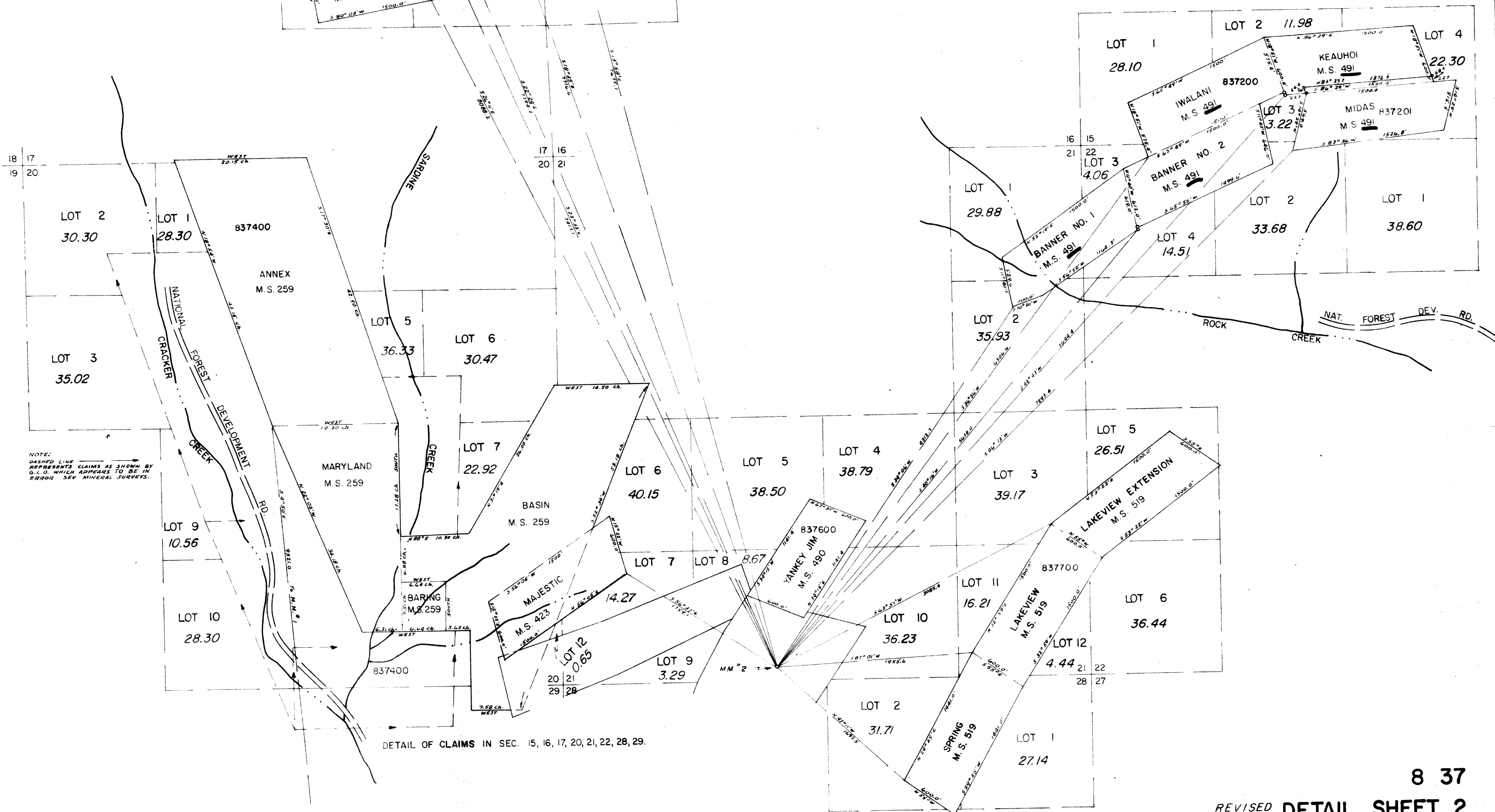
REFER TO 8 37 FOR
LOC. & TAX LOTTING

7/21/67

Revised on
6-22-71



DETAIL OF CLAIMS
IN SEC. 23, 26, 27.



NOTE:
DASHED LINE
REPRESENTS CLAIMS AS SHOWN BY
G.L.D. WHICH APPEARS TO BE IN
ERROR. SEE MINERAL SURVEYS.

DETAIL OF CLAIMS IN SEC. 15, 16, 17, 20, 21, 22, 28, 29.

8 37
REVISED DETAIL SHEET 2
68