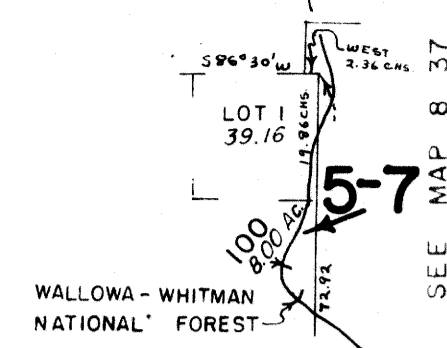


T 8 S R 36 E W.M.
BAKER COUNTY

1" = 2000'

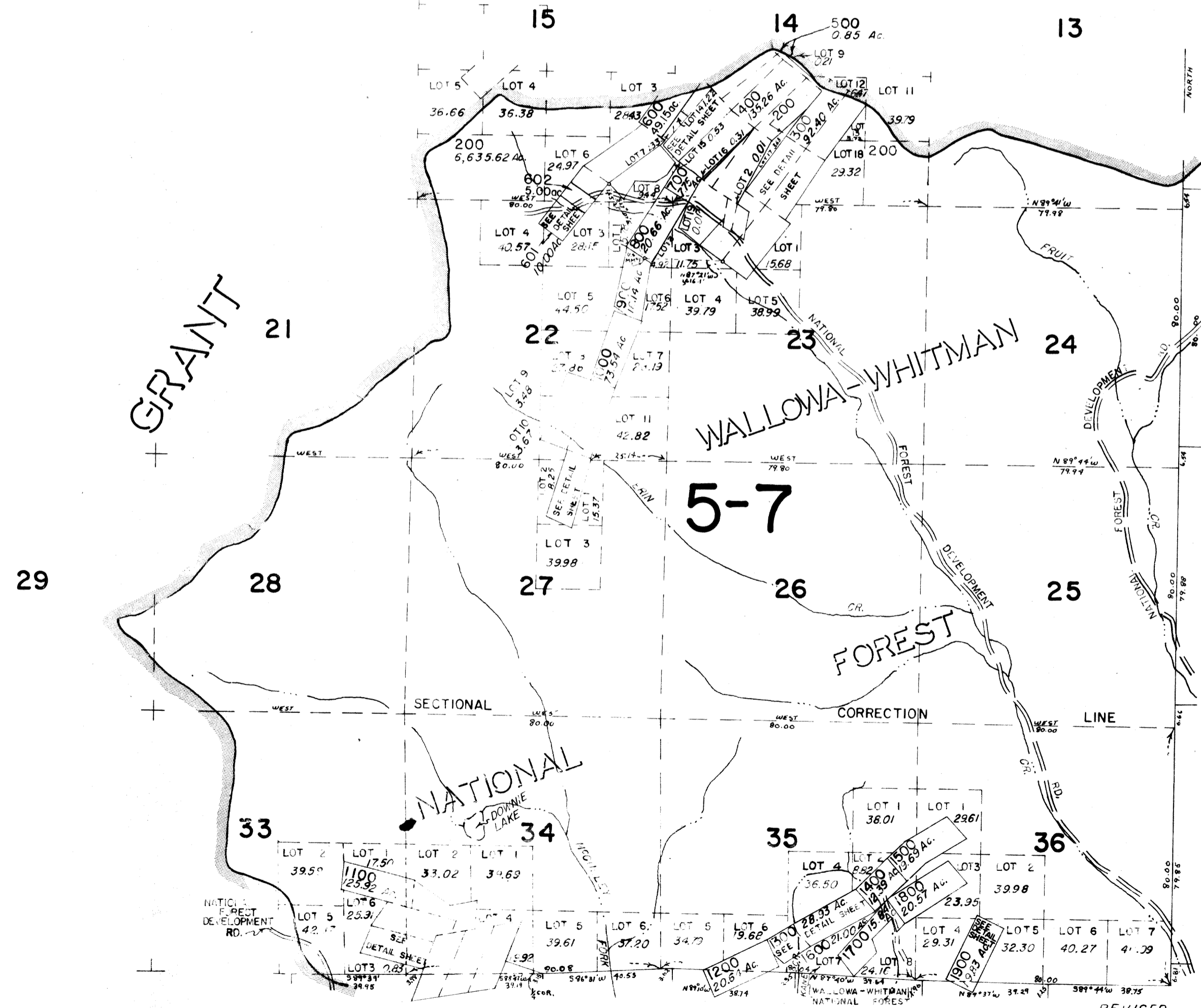
8 36
& INDEX



CANCELLED NOS
800M1

changed on
10/03/70

COUNTY



NOTE: LOTS 9,16,17 IN SEC. 14
AND LOT 2 IN SEC. 23 ARE
PART OF T.L. 200

SEE MAP 8 37

SEE MAP 9 36

REVISED
4/22/80

8 36
64

R.B. 9/3/62