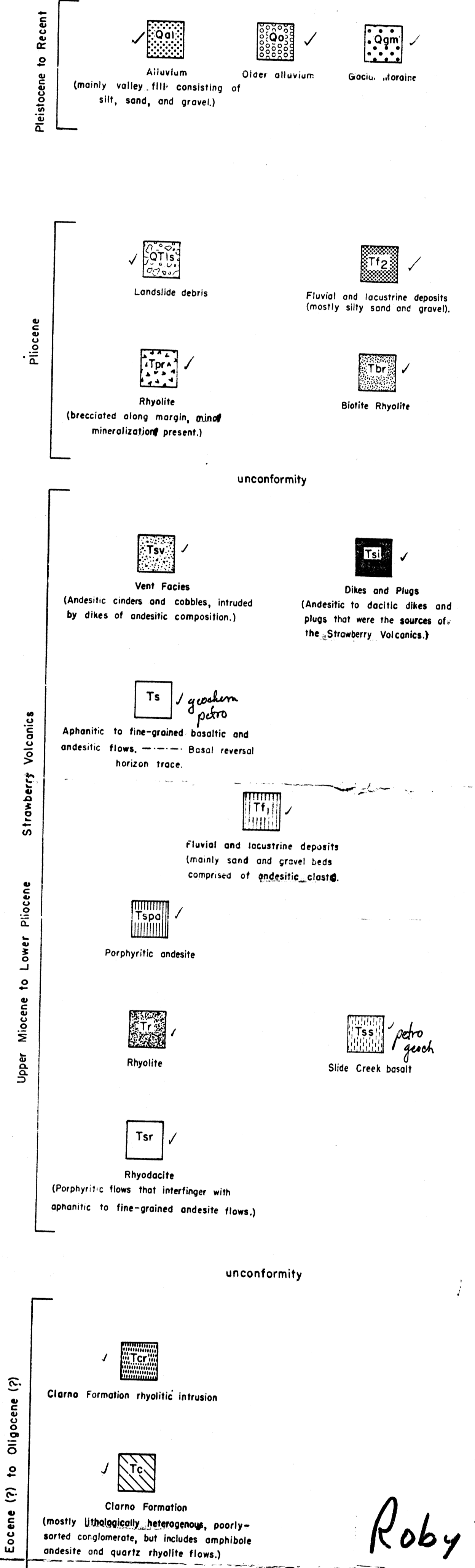
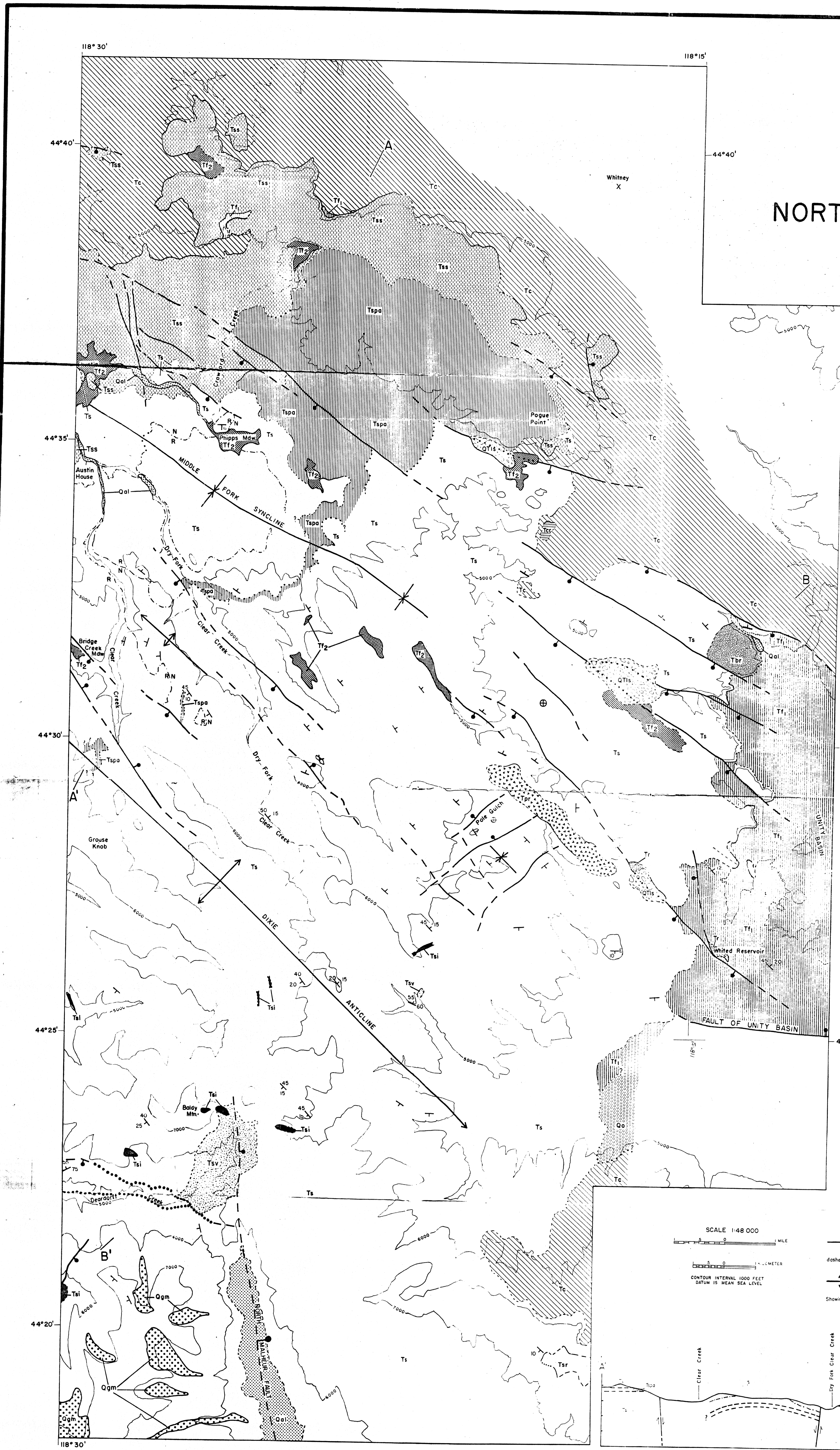


PROPERTY OF UNIVERSITY OF OREGON  
 DEPT. OF GEOLOGY, 100 UNIVERSITY AVENUE,  
 EUGENE, OREGON, 97403

# GEOLOGY OF NORTHERN STRAWBERRY VOLCANICS

BY  
THOMAS L. ROBYN  
1977



Roby TL 1977

SCALE 1:48 000

1 MILE

1000 METERS

CONTOUR INTERVAL 1000 FEET  
DATUM IS MEAN SEA LEVEL

--- Contact ---

- - - - - Fault - - - - -

--- Approximate; dotted where intersected; bar and ball on downthrown side.

↕ Anticline

↘ Syncline

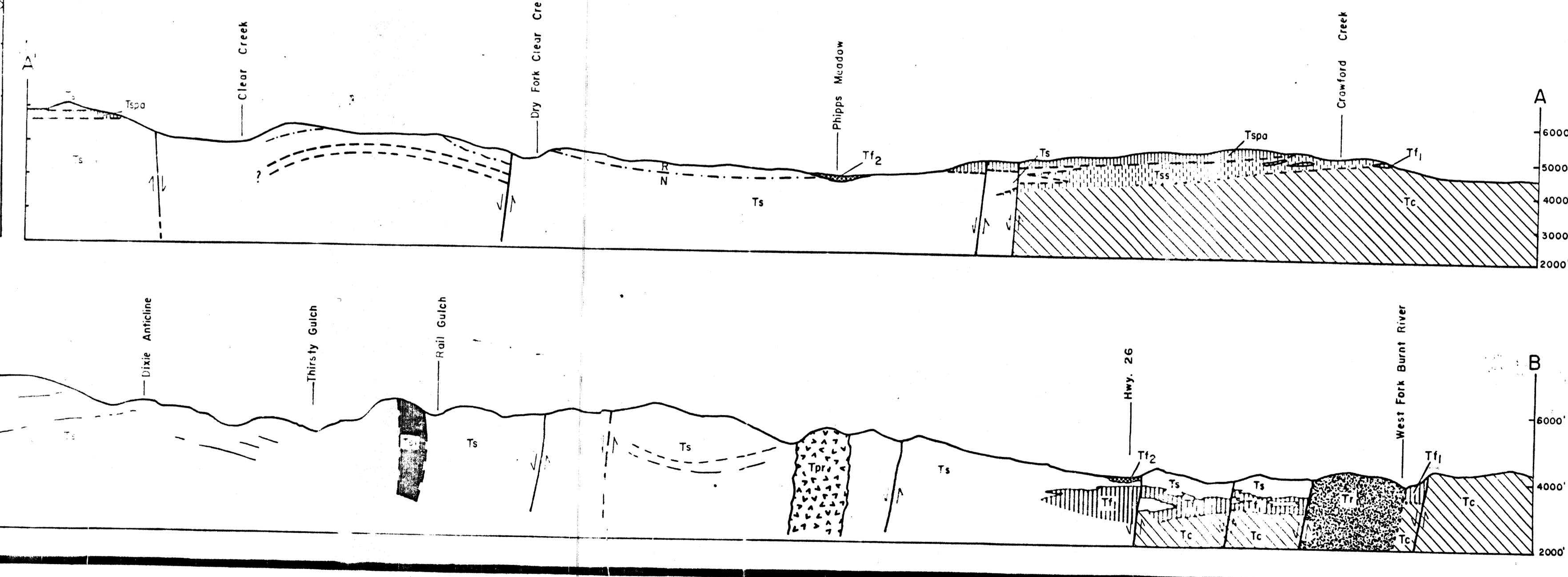
Showing axis, face of fold. Arrow indicates direction of plunge.

90° Upright

Horizontal

Strikes and dips of beds or flows.

Symbols with numbers are general attitudes with shallow dips determined from aerial photos.



BASE: UNITED STATES GEOLOGICAL SURVEY  
15 MINUTE TOPOGRAPHIC MAPS

MAP COMPILED JUNE 1977  
UNIVERSITY OF OREGON, EUGENE, OREGON  
T. ROBYN, R.V. FITTS