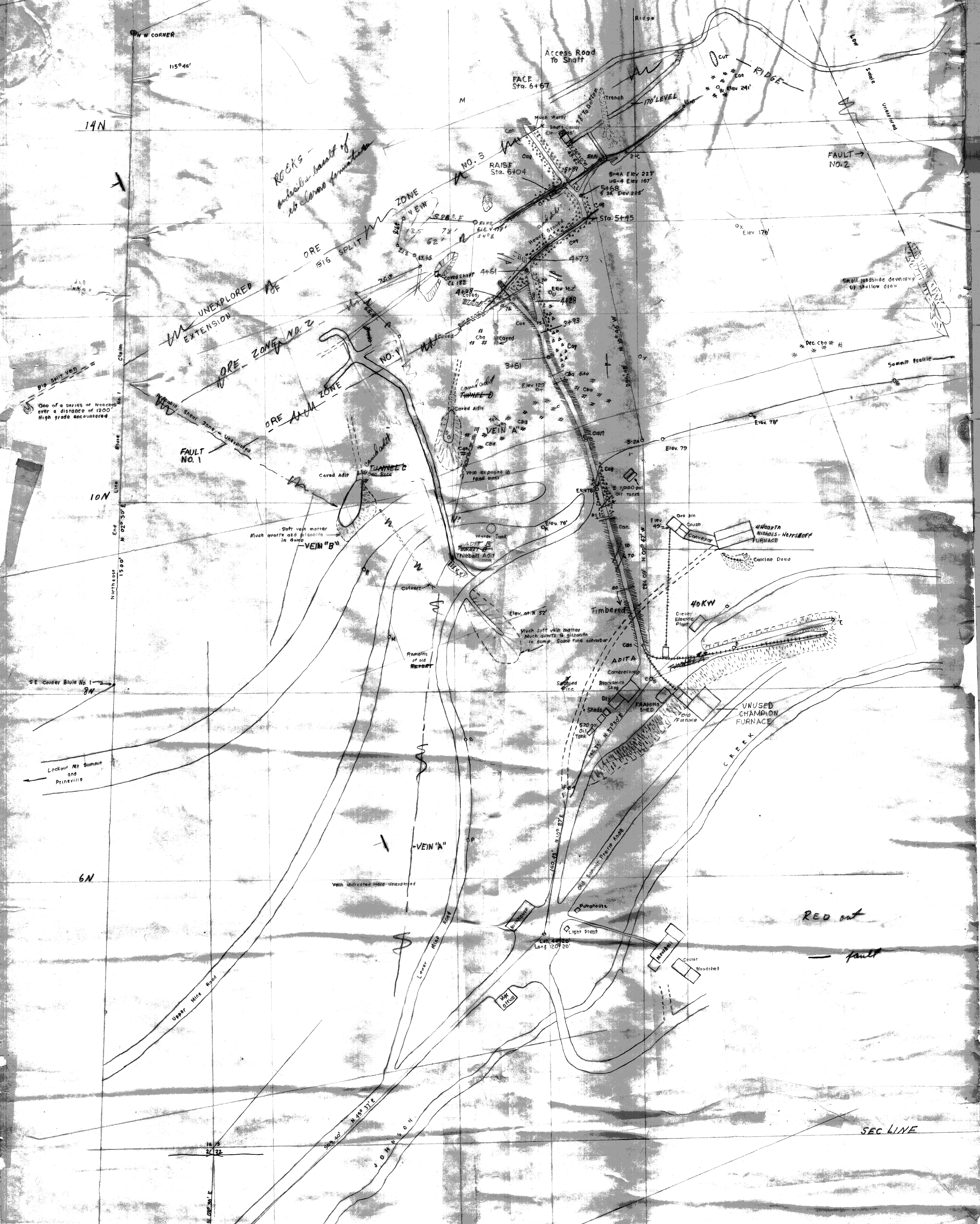
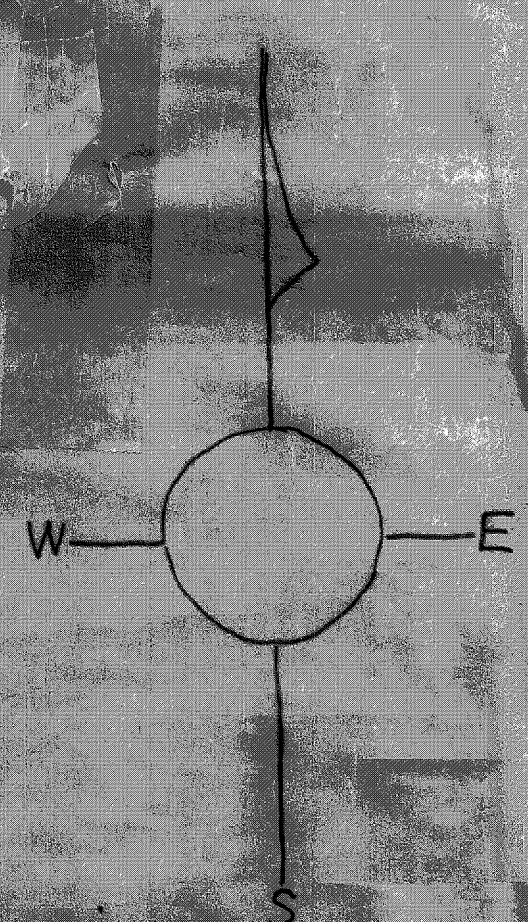


W. J. WESTMAN



MAP SHOWING WORKINGS OF THE AMITY MINE CROOK COUNTY OREGON

Chs. Clarno basalt dark colored, usually columnar  
Ccs. Clarno andesite - here dense rock  
Ceg. Clarno caliche conglomerate - soft and ho bearing  
Str. S. dip of vein  
Str. S. dip of fault  
Str. S. dip of bed  
Str. S. dip of fracture  
Surface elevation of map

BY  
BORTON J. WESTMAN  
MINING GEOLOGIST

ALBANY, OREGON - SEPT., 1902

Scale bar showing 0, 50, 100, 150, 200 feet.